

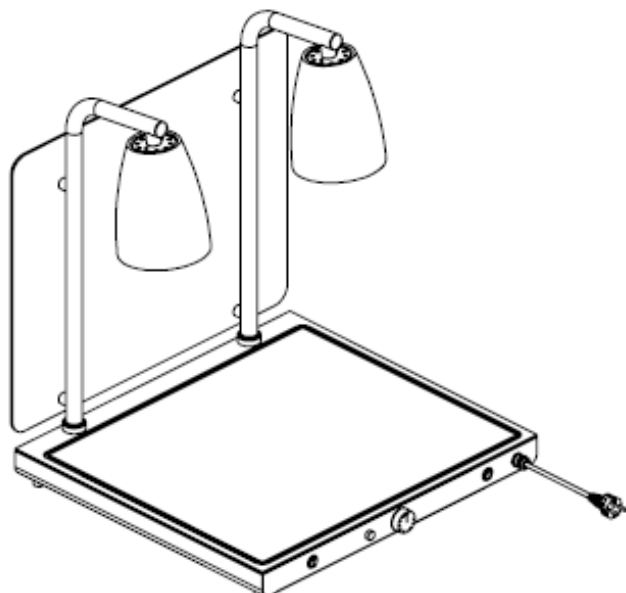
## Instruction manual

**HELIOS 2/1 FIX**  
**HELIOS 2/1 FLEX**

**HELIOS 1/1 FIX**  
**HELIOS 1/1 FLEX**

**HELIOS AL FIX**  
**HELIOS AL FLEX**

**HELIOS AIR C**  
**HELIOS AIR R**  
**HELIOS AIR C INT**  
**HELIOS AIR R INT**



## Summary

**EN**

1. Instruction warnings.....	2
2. Safety and Right Use Warnings.....	2
3. Warranty.....	2
3.1 Unpacking.....	2
4. Appliance Start Up.....	4
4.1 Technical Features .....	5
4.2 Installation instructions for HELIOS AIR C/R and AIR INT C/R .....	5
4.3 Assembly.....	5
5. Cleaning and Maintenance .....	6
5.1 Troubleshooting.....	6
6. Components.....	7
6.1 HELIOS 2/1 .....	7
6.2 HELIOS 1/1 .....	8
6.3 HELIOS AL FIX / FLEX.....	9
6.4 HELIOS AIR C / R .....	10
7. Wiring diagrams.....	11
8. Disposal .....	13

# 1. Instruction warnings

User has to hold the whole instructions. User must store up this document in case of use. The manufacturer is not responsible of any damage incurred due to the failure of improper use of this manual.

All measures in this manual are in mm.

## 2. Safety and Right Use Warnings



The Rocam Losi products meet the latest technological evolutions and current safety guidelines. Buffet line **HELIOS**, object of this booklet, is designed to be in compliance with directives and field laws, in order to guarantee a safe and reliable product.

Any other use will be considered inappropriate to the original destination. The producer is not responsible of any damage caused by an improper use. Responsibility lies only on user. A proper use also includes compliance with the instructions for use and installation and any additional documentation as well as the conditions of inspection and maintenance.

## 3. Warranty

We thank you for purchasing a Rocam Losi product, designed and produced for a professional environment. Due to commercial and construction requirements, the manufacturer reserves the right to make changes in order to enhance the quality and use of product. Rocam Losi s.r.l., in compliance with European Community legislation, grants its products for 12 months. This warranty does not include electrical parts, labour and all replacements related to an improper use of the good. Any manipulation carried out automatically excludes the liability of the manufacturer. The products or parts to be replaced or repaired for unequivocal defects in workmanship and materials used must be in a "free port" at the offices of the producer, who after a careful inspection, will repair or replace them. The repairs are carried out exclusively at the headquarters of the manufacturer, and none cost incurred by the customer for repairs will be refunded by the manufacturer unless explicitly agreed.

**ANY MANIPULATION AUTOMATICALLY EXCLUDES THE MANUFACTURER'S LIABILITY AND THE WARRANTY ON THIS PRODUCT.**

### 3.1 Unpacking



This item is packed and shipped assembled. The manufacturer declines every responsibility for damages of someone or something caused by the failure to comply with the instructions of this manual.

Do not make any structural change to the trolley.

The elements composing the packaging (plastic, polyurethane foam, bubble wrap, Styrofoam, cardboard and so on) must be kept away from children as potential sources of danger and must be collected and disposed off separately in accordance with local regulations.

The manufacturer declines every responsibility of damage of someone or something caused by the failure to comply with the instructions of this manual.

After the unpacking of the item from its packing, proceed by removing the adhesive plastic tape before starting up the product. Any residual glue has to be removed carefully (do not use abrasive cleaners).

The device is designed to run on AC to the voltage specified on the technical data plate (located on the bottom of the tank).

The grounding line is marked by the colours yellow/green and must not be interrupted.

The device is provided with a cable in accordance with the CE regulations and with a schuko plug (that can be replaced, when necessary, with a different plug, suitable for the specified wattage and in accordance to the current regulations and guidelines; when necessary, replace the provided cable with a new one with the same features).



### Before switching on the appliance

- Check if the electrical system can withstand the appliance's load (WATT as indicated on the technical plate)
- Make sure that the electrical system is provided with ground connection according to the current norms and guidelines.
- Connect the appliance with the ground network through a cable connected to the specific screw placed on the external casing of the appliance.

## 4. Appliance Start Up

### HELIOS 2/1 and 1/1 series

To switch on the device, turn the thermostat knob on the required temperature (max 90°) then the indicator light will turn on and when the right temperature is reached it will turn off; through the thermostat the selected temperature will be preserved.

Turn the knob to the position "0" (OFF) to switch off the device.

The infrared lamps have an independent system and are managed from the switch located on the top of the device.

### HELIOS AL and AIR

To switch on the device, turn on the switch located on the device or the main remote switch.

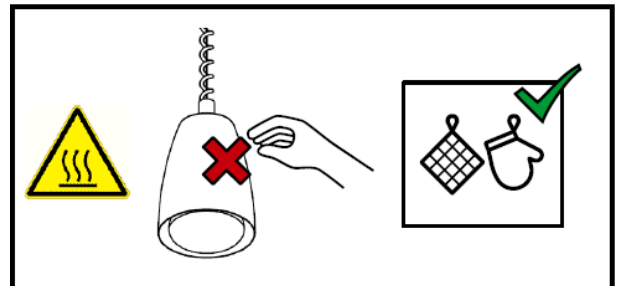
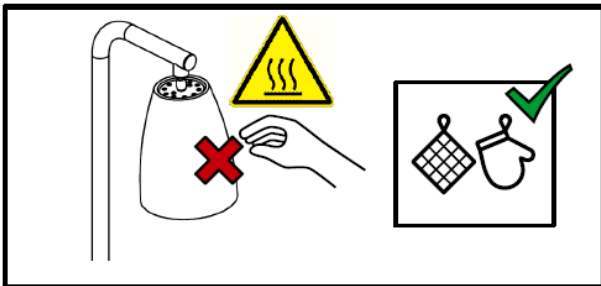


Once turned on, the appliance will reach the desired temperature very quickly. In order to avoid any inconvenience, turn the device on only shortly before starting the service and turn it off shortly after the end. Do not make any structural change to the appliance.

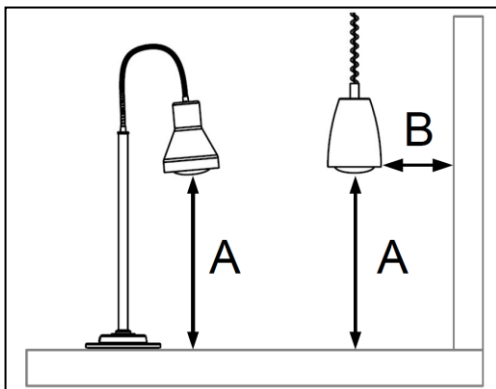
**ELECTRIC SHOCK HAZARD:** unit is not weatherproof. Locate unit indoors.



**BURN HAZARD:** Some exterior surfaces on unit will get hot. Use caution when touching these areas.



**Use a pot holder or cloth to avoid burns to the hands while adjusting the Helios series lampshades**



**A:** minimum distance from NON-COMBUSTIBLE surfaces 40 cm.

Minimum distance from combustible surfaces 15 cm

**B:** minimum distance from combustible walls and materials 10 cm

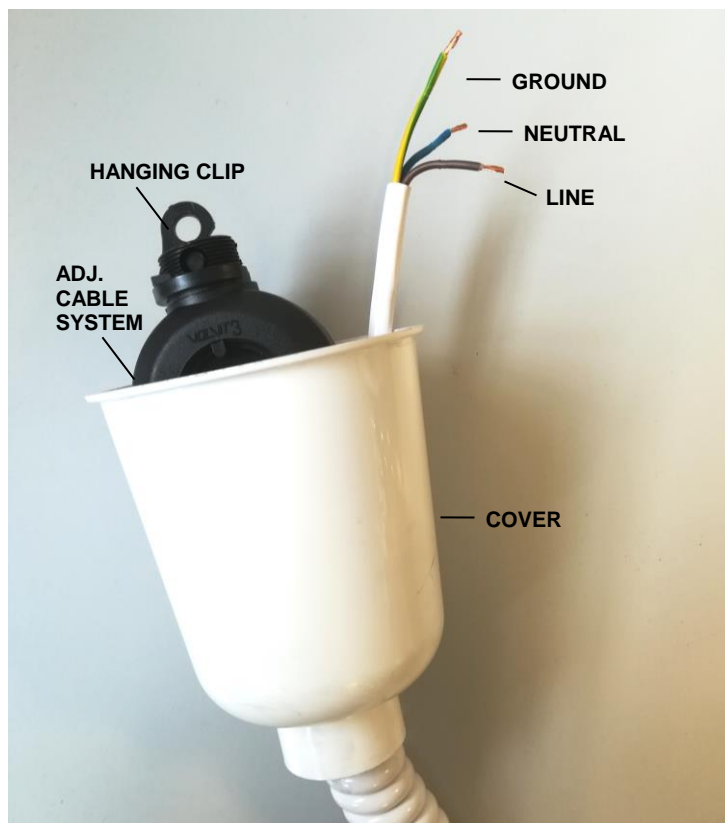
**USE ONLY LAMP WITH MAXIMUM 250W OUTPUT**

## 4.1 Technical Features

	<i>Power supply</i>	<i>Max rated output</i>	<i>Infrared lamps</i>	<i>Heating element warm plate</i>	<i>Temperature range</i>
HELIOS 2/1	230 V	1250 W	2 x 250 W	750 W	+30°/+90°C
HELIOS 1/1	230 V	750 W	250 W	500 W	+30°/+90°C
HELIOS 2AL	230 V	500 W	2 x 250 W	-	-
HELIOS AL FIX / FLEX	230 V	250 W	250 W	-	-
HELIOS AIR C & R	230 V	250 W	250 W	-	-
HELIOS AIR C & R INT	230 V	250 W	250 W	-	-

## 4.2 Installation instructions for HELIOS AIR C/R and AIR INT C/R

1. Hang the lamp using the hanging clip (in case of AIR C model use the proper fixture system provided with the lamp)
2. Complete the wiring follow the wiring diagram
3. Set the tension of the adjustable cable system
4. Put the cover on by screwing it in clockwise direction
5. Screw in the light bulb (1) in the lamp holder
6. Turn on the power and switch on the lamp



### Before to start the installation:

- Turn OFF power at mounting location before installation of unit.
- Install a proper hang or fixture (not provided) on the ceiling
- In case of AIR C model drill out the proper holes in the ceiling to mount the fixture provided with the lamp.

## 4.3 Assembly

The appliances are provided mounted. Before the first use it is necessary to screw-in the infrared light bulb inside the specific ceramic lamp holders. Do not tight the bulbs too hard to avoid the breaking of the lamp holders.

## 5. Cleaning and Maintenance



Before any cleaning operation unplug the device from the electrical system. Never wash the appliance with water jets in order to prevent water seepage inside the electrical components.



Before any cleaning operation wait for the appliance to be cooled down (wait at least one hour from the end of the service).

The warm plate can be cleaned with st.steel specific cleansers, the two chromed hooks should be cleaned with specific cleansers for chromed surfaces, in any case do not use abrasives.

The appliance is provided with a safety thermostat with automatic reset which interrupts the power supply in case of overheating.

The appliance resumes its normal operation with the standard operating temperature.

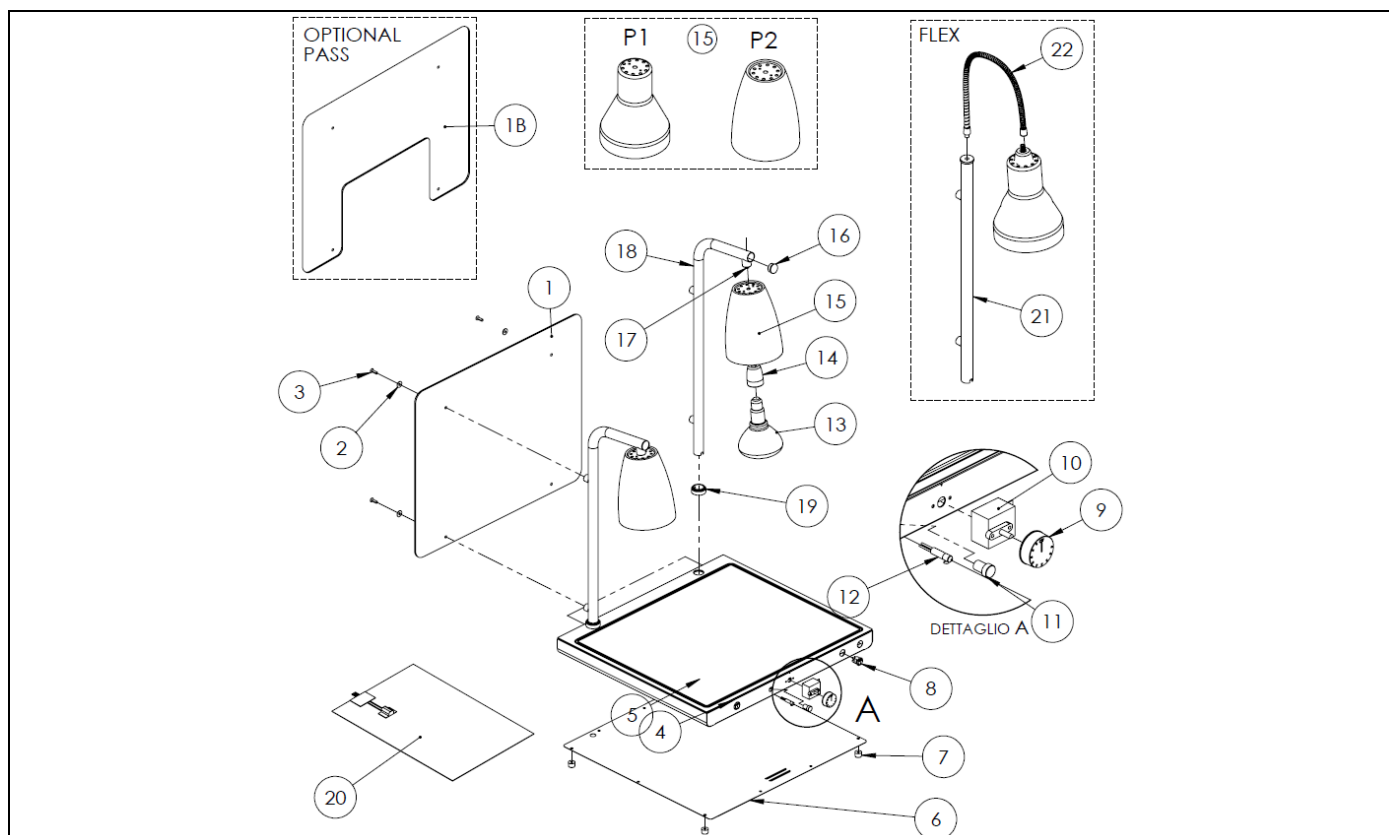
### 5.1 Troubleshooting

<b><i>Problem</i></b>	<b><i>Possible reason</i></b>	<b><i>Solution</i></b>
The plate does not warm up	Power failure	Check the presence of power in the electric system
	Heating element is burned	Contact the retailer
	Thermostat is broken	Contact the retailer
	The power cable is worn-out	Replace the cable with a suitable one
The lamps do not light up	Lamps are burned	Replace the lamps with as many suitable ones
	The switch doesn't work	Contact the retailer
The switch light does not light up	The warm plate has reached the temperature	-
	The switch light is burned	Contact the retailer

Whenever a replacement of the adhesive heating element is needed, clean up CAREFULLY the bottom from the old heating element glue residuals with a nitro solvent and place the new one only when the bottom is cleaned and dry.

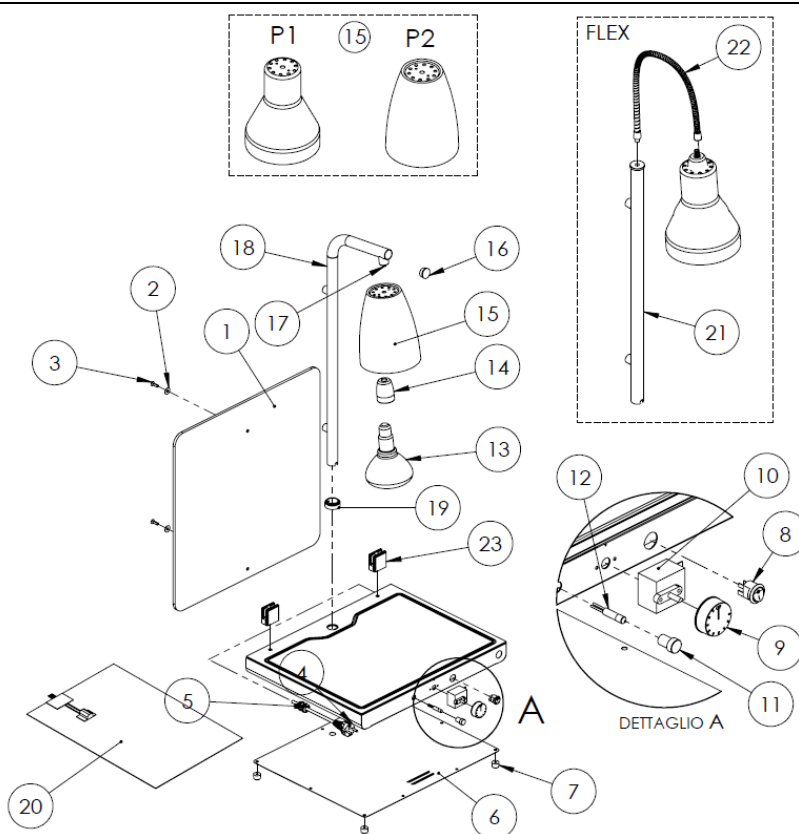
## 6. Components

### 6.1 HELIOS 2/1



Ref.	Code	Description	
		HELIOS 2/1	
1	C02PLPARA/HEL	1	2/1 Sneeze guard
1B		1	2/1 Sneeze guard PASS Opt
2	B03ALUOD6.4	4	Special Washer
3	B01ZISC6X16	4	TSCE Screw M6x16
4	D0500CAVO	1	Spiral cable
5	D0500PRESCA	1	Cable gland PG 13.5
6		1	Galvanized base
7	E01PLP/TONP	4	Round legs
8	D0500INTLED	2	Rounded switch
9	D0300TE3090	1	Thermostat knob
10			Thermostat 30/90° C
11	D0500SPIATC	1	Light
12			
13	D0200INFRA	2	Infrared Lamp
14	D0500/LAMP	2	E27 Lamp holder
15	D0500PARP1CR	2	P1 Lampshade
	D0500PARP2CR	2	P2 Lampshade
16	E01CRCOPT28	2	Chromed cap for tube
17		2	Tiges 20 mm
18	RT3CRTFIXHEL	2	Tube support for Helios FIX
19	B04CRGHIBASE	2	Base ring for Helios
20	D040INRSIL750	1	Silicon heating plate
21	RT3CRTFLEXHEL	2	Tube support for Helios FLEX
22	D0500CFLEXCR	2	Flexible support 53 cm

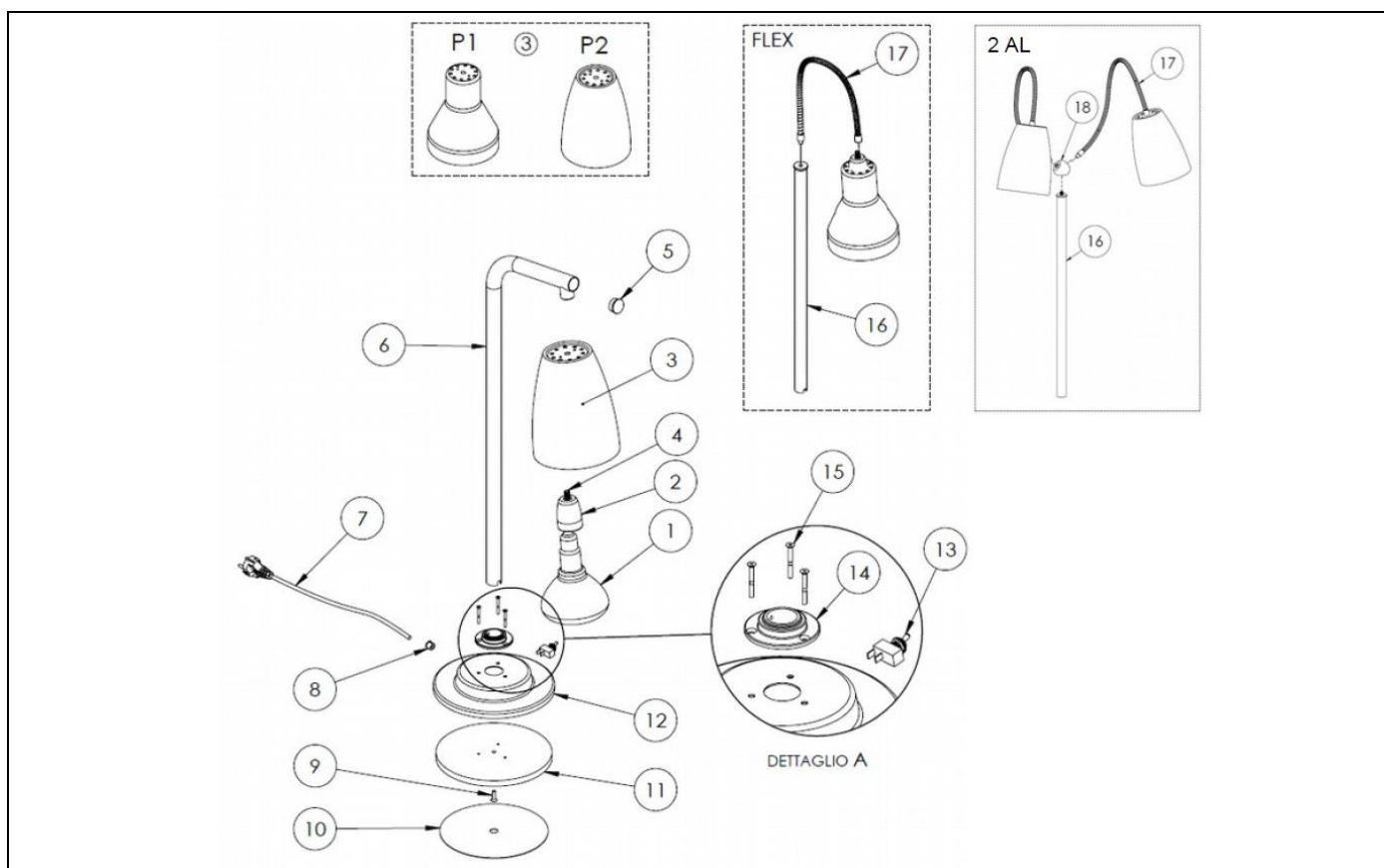
## 6.2 HELIOS 1/1



Ref.	Code	Description	
		HELIOS 1/1	
1	C02PLPARA/HEL	1	1/1 Sneezeguard
2	B03ALUOD6.4	4	Special Washer
3	B01ZISC6X16	4	TSCE Screw M6x16
4	D0500CAVO	1	Spiral cable
5	D0500PRESCA	1	Cable gland PG 13.5
6		1	1/1 Galvanized base
7	E01PLP/TONP	4	Round legs
8	D0500INTLED	1	Rounded switch
9	D0300TE3090	1	Thermostat knob
10			Thermostat 30/90° C
11	D0500SPIATC	1	Light
12			
13	D0200INFRA	1	Infrared Lamp
14	D0500/LAMP	1	E27 Lamp holder
15	D0500PARP1CR	1	P1 Lampshade
	D0500PARP2CR	1	P2 Lampshade
16	E01CRCOPT28	1	Chromed cap for tube
17		1	Tiges 20 mm
18	RT3CRTFIXHEL	1	Tube support for Helios FIX
19	B04CRGHIBASE	1	Base ring for Helios
20	D0401NRSIL500	1	Silicon heating plate
21	RT3CRTFLEXHEL	1	Tube support for Helios FLEX
	D0500CFLEXCR	1	Flexible support 53 cm
23		2	Glass holder

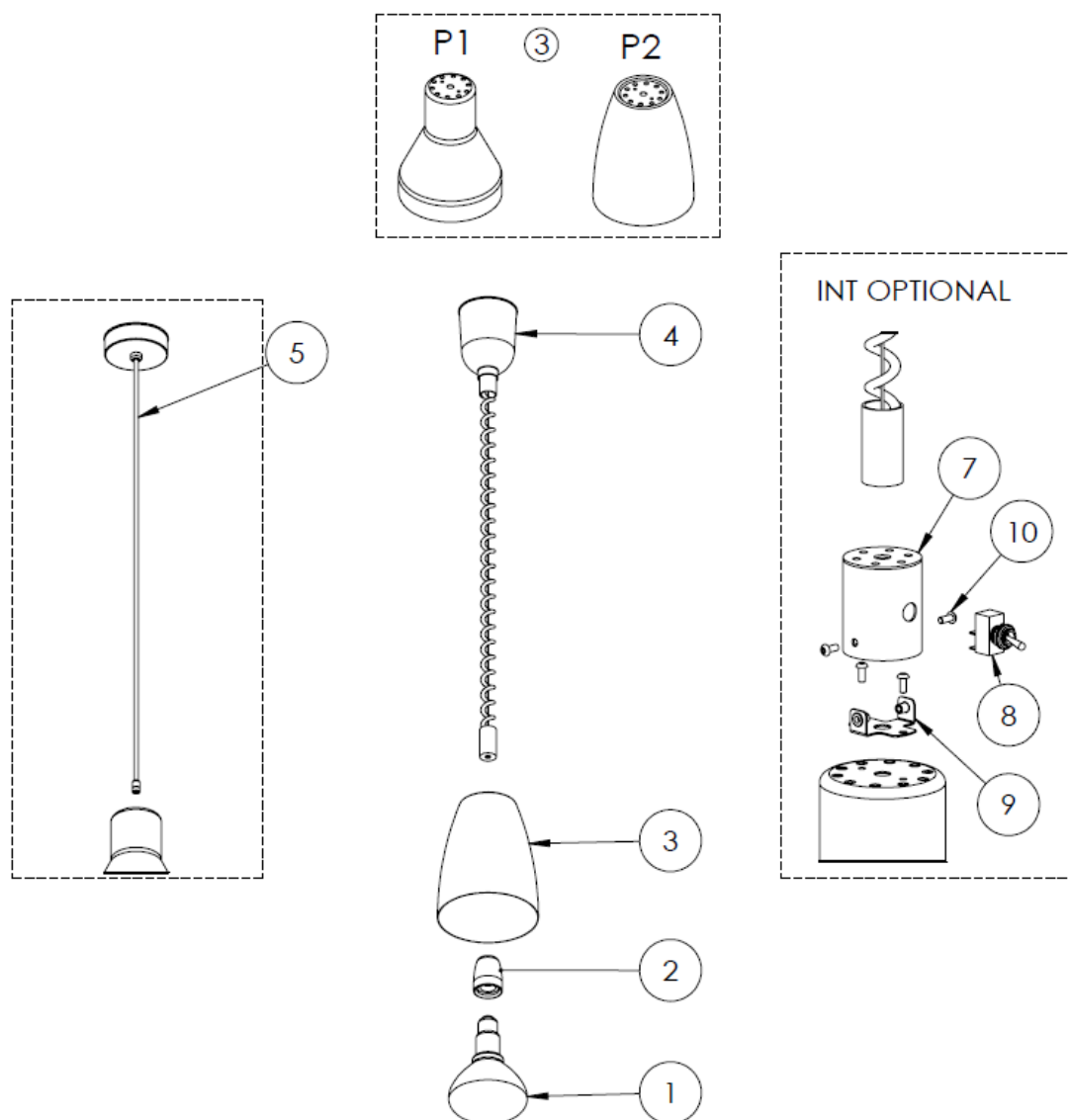


## 6.3 HELIOS AL FIX / FLEX



Ref.	Code	Description	
		Helios AL	
1	D0200INFRA	1	Infrared lamp 250 W
2	D0500P/LAMP	1	E27 Ceramic lamp-holder
3	D0500PARP1CR	1	P1 Lampshade
	D0500PARP2CR	1	P2 Lampshade
4		1	Tiges 20 mm
5	E01CRCOPT28	1	Chrome plug
6	RT3CRFIXHELAL	1	Tube for AL FIX
7	D0500C3X75PL	1	Cable with plug
8	D0500BLOCCAVO	1	Cable stopper
9	B01BRS6X40	1	M6 x 40 Screw
10		1	Rubber base
11	B0400CONTRAPHEL	1	Counterweight
12	C030BASAL	1	Base for AL
13		1	Toggle switch AC17
14	B04CRGHIBASAL	1	Base ring for AL
15	B01INTS4X40	3	M4 x 40 Screws
16	RT3CRFLEX	1	Tube for AL FLEX
17	D0500CFLEXCR	1	Flexible support 53 cm
18		1	2 Lamps adaptor link

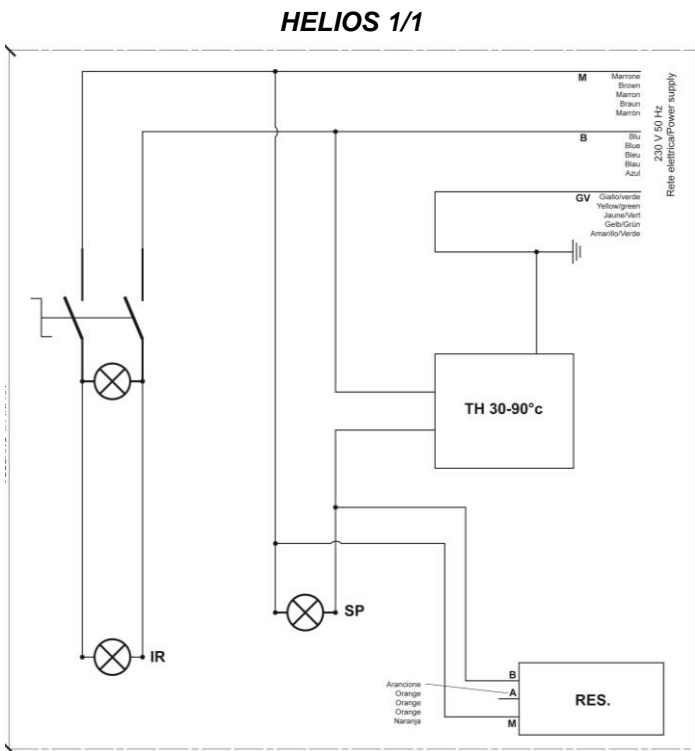
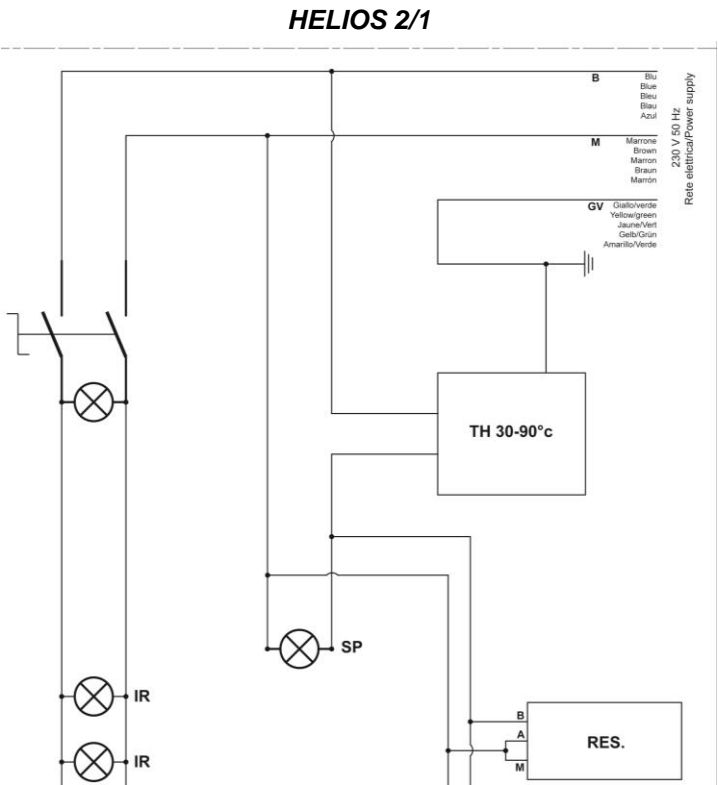
## 6.4 HELIOS AIR C / R



Ref.	Code	Description	
		Helios AL	
1	D0200INFRA	1	Infrared lamp 250 W
2	D0500P/LAMP	1	E27 Ceramic lamp-holder
3	D0500PARP1CR	1	P1 Lampshade
	D0500PARP2CR	1	P2 Lampshade
4		1	Adjustable cable assembly
5		1	Air C cable assembly
7		1	INT box
8		1	INT support
9		1	AC17 Toggle Switch
10		2	M4x10 Screw

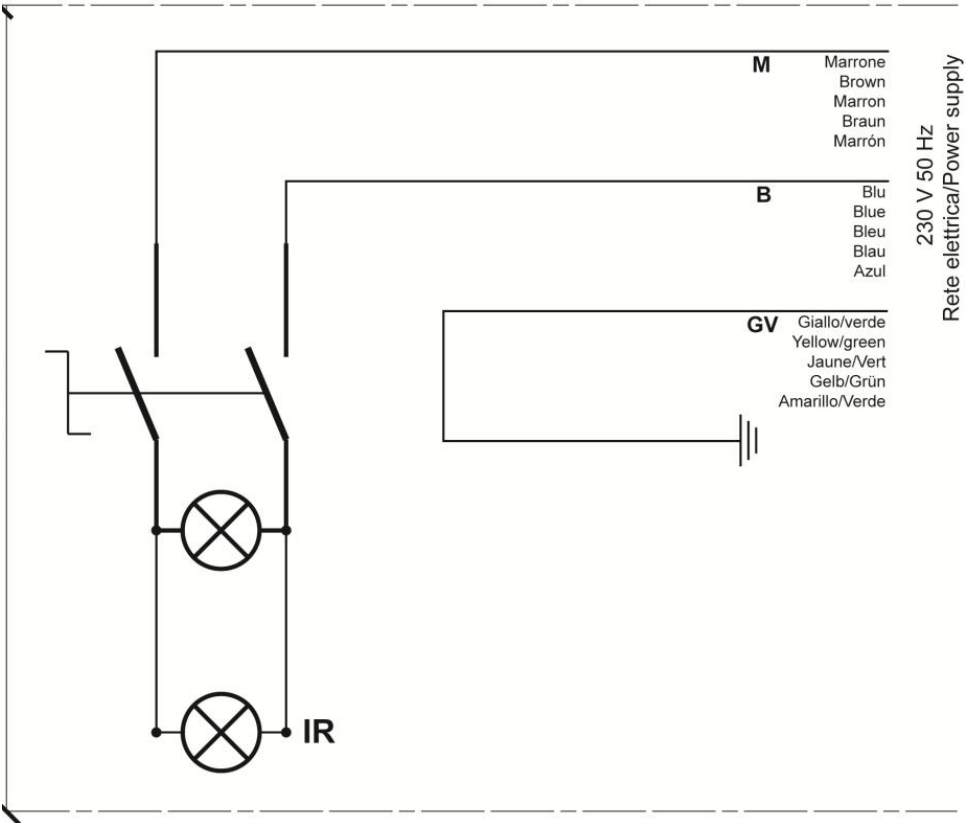
For non-chrome versions, report to Rocam the color required for the spare.

7. Wiring diagrams



Ref.	Description
TH	Thermostat 30-90°C
IR	Infrared lamps
SP	Switch light
RES	Heating element

HELIOS AL / AIR



Ref.	Description
IR	Infrared lamps

## 8. Disposal



The device must be disposed according to the local regulations and, where possible, it is necessary to unmount it and differentiate the various components.. The packing elements (plastic, foam, bubble wrap, styrofoam, cardboard, etc..) must be kept away from children as potential danger and have to be collected and disposed separately according to the local regulations.

This marking shown on the product or its literature, indicates that it should not be disposed with other household wastes at the end of its working life. To prevent possible harm to the environment or human health from uncontrolled waste disposal, please separate this from other types of wastes and recycle it responsibly to promote the sustainable reuse of material resources. Household users should contact either the retailer where they purchased this product, or their local government office, for details of where and how they can take this item for environmentally safe recycling. Business users should contact their supplier and check the terms and conditions of the purchase contract. This product should not be mixed with other commercial wastes for disposal.