



## ATHENA 4 R WALL

SKU: 01000ATH3FREW

Refrigerated buffet with laminated wood structure and rear mirror to increase visual depth and offer a wider upper shelf. For aesthetic continuity, the compressor unit ventilation grids are cut directly into the wood structure. Capacity modules: 3-4-5-6 GN 1/1 according to model. Electrical lowerable or fix Plexyglas®s sneezeguard (Athena /M). Available with static or ventilated refrigeration, with 26 cm well or Hanex® glass counter. Digital thermostat ( 2°/ 8°) and LED lighting. Two polyamide castors with brake as standard. GN pans not included.



Ø75

GN

4 GN 1/1 up to h.150



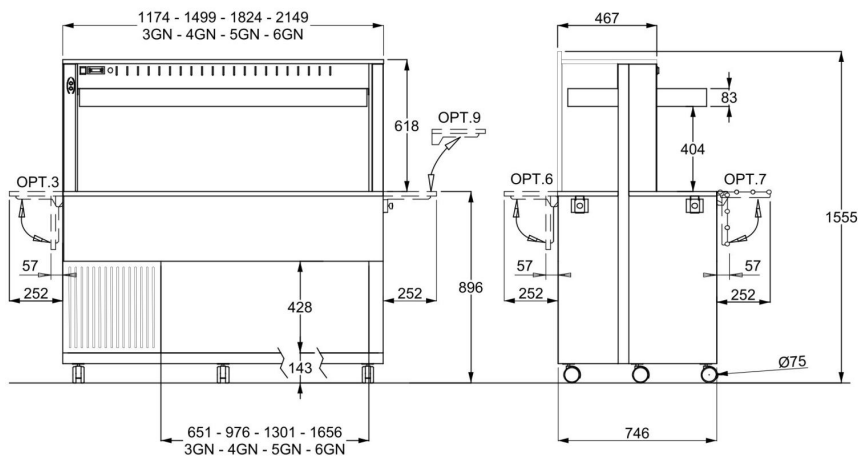
362 W



3



2



## Optional/Options

**OPT. 3 EN**



Laminated wood folding dish-holder on short side

**OPT. 3-SST EN**



Foldable dish holder short side - Stainless steel

**OPT. 3-TUB EN**



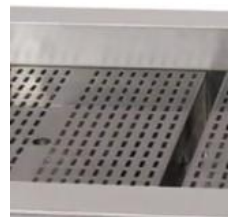
Tube st. steel dish-holder on short side

**OPT. 4 EN**



Full lower closure w/doors

**OPT. 5 EN**



Removable display grid

**OPT. 6 EN**



Wooden folding dish-holder

**OPT. 7 EN**



Folding S/stainless steel tube trayholder

**OPT. 8 EN**



Foldable tray slide

**OPT. 9-A EN**



Removable long tray slide on short side in laminated wood

**OPT. 9-TUBA EN**



Removable long tray slide on short side in stainless steel tube

**OPT. 9-SSTA EN**



Removable long tray slide on short side in stainless steel

**OPT. 9-C EN**



Removable tray slide on short side in laminated wood, for wall leaning

**OPT. 9C-TUBA EN**



Removable tray slide on short side in stainless steel tube, for wall leaning

**OPT. 9C-SSTA EN**



Removable tray slide on short side in stainless steel, for wall leaning

**OPT. 10 EN**



Reinforced 125mm. diam steel castors, 2 with brake

**OPT. 11/FO EN**



Surcharge for contrasting worktop in Formica color

**OPT. 14/F EN**



Intermediate floor, compartment mod. refrigerated

**OPT. 15-F/LAM EN**



Niche for refrigerated modules - Laminated wood

**OPT. 15-F/FO EN**



Niche for refrigerated modules - Formica

**OPT. 16/LAM EN**



Upper shelf top with increased depth and rear containing edge - Laminated wood

**OPT. 16/FO EN**



Upper shelf top with increased depth and rear containing edge - Formica

**OPT. 17 EN**



Intermediate custom module

**OPT. 17CH EN**



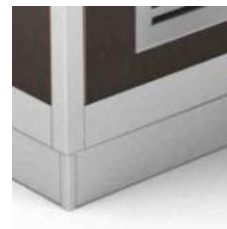
Custom head module

**OPT. PZ EN**



Feet

**OPT. Z EN**



Aluminium coated PVC feet skirting

**OPT. UK EN**



Surcharge for UK plug

**OPT. ADS EN**



Customized adhesive sticker

**OPT. HZ6 EN**



Compressor 60Hz

**OPT. 45CUT EN**



45° cut for optional 6/7/8

Finiture/Finishes

LAR - SILVER



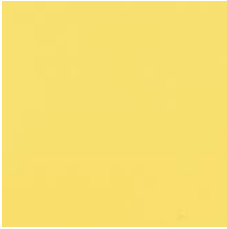
SILVER

LRS - ROSE



STANDARD - LAMINATED  
WOOD

LZA - SAFFRON



STANDARD - LAMINATED  
WOOD

LIM - LIME



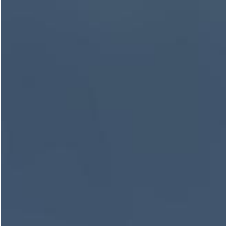
STANDARD - LAMINATED  
WOOD

LSK - SKY



SKY

LOC - OCEAN



OCEAN

LER - IVY



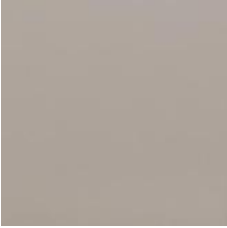
IVY

LSV - SAGE



SAGE

LCP - CAPPUCCINO



CAPPUCCINO

LTC - CLAY



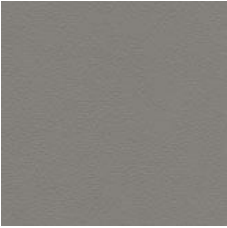
CLAY

LNI - NIAGARA



NIAGARA

LGR - GREY



STANDARD - LAMINATED  
WOOD

LBV - VEINED WHITE



STANDARD - LAMINATED  
WOOD

LWS - WHITE SAND



WHITE SAND

LBE - BIRCH



STANDARD - LAMINATED  
WOOD

LNE - GREY FOG



STANDARD - LAMINATED  
WOOD

LOM - ELM



STANDARD - LAMINATED  
WOOD

LNO - WALNUT



STANDARD - LAMINATED  
WOOD

LWE - WENGE'



STANDARD - LAMINATED  
WOOD

LAN - ANTHRACITE



STANDARD - LAMINATED  
WOOD

LNV - VEINED BLACK



STANDARD - LAMINATED  
WOOD