



ATHENA 5 BM/HALO WALL

SKU: 01000ATH3FBMW

Heated buffet with laminated wood structure and rear mirror to increase visual depth and provide the unit with a larger upper shelf. Capacity modules: 3-4-5-6 GN 1/1 according to model. Fid plexiglass® sneezeguard. Models with bainmarie heating or with dry glass countertop. To avoid fogging of the lower part of the mirror in the BM version, we recommend the use of lids on the GN pans. Available too some units with halogen lamps for a dry top heating. LED lighting and two polyamide wheels with brakes as standard. GN pans not included.



Ø75

GN

5 GN 1/1



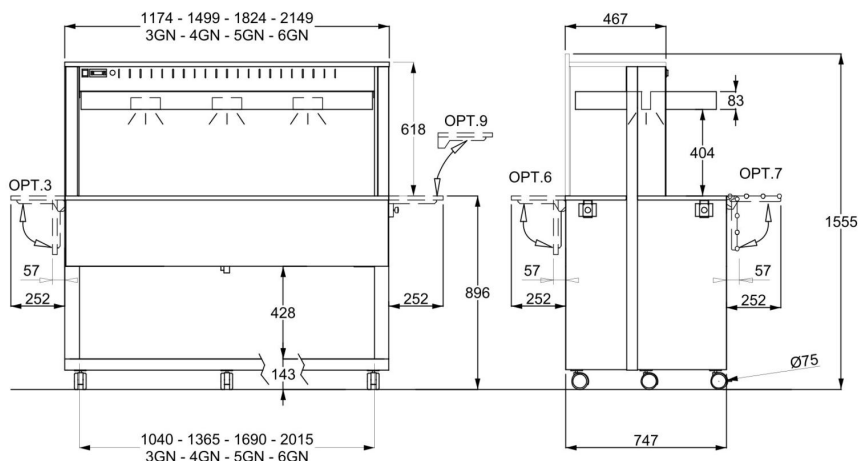
3023 W



3



2



Optional/Options

OPT. 3 EN



Laminated wood folding dish-holder on short side

OPT. 3-SST EN



Foldable dish holder short side - Stainless steel

OPT. 3-TUB EN



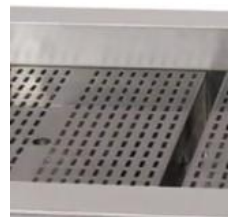
Tube st. steel dish-holder on short side

OPT. 4 EN



Full lower closure w/doors

OPT. 5 EN



Removable display grid

OPT. 6 EN



Wooden folding dish-holder

OPT. 7 EN



Folding S/steel tube trayholder

OPT. 8 EN



Foldable tray slide

OPT. 9-A EN



Removable long tray slide on short side in laminated wood

OPT. 9-TUBA EN



Removable long tray slide on short side in stainless steel tube

OPT. 9-SSTA EN



Removable long tray slide on short side in stainless steel

OPT. 9-C EN



Removable tray slide on short side in laminated wood, for wall leaning

OPT. 9C-TUBA EN



Removable tray slide on short side in stainless steel tube, for wall leaning

OPT. 9C-SSTA EN



Removable tray slide on short side in stainless steel, for wall leaning

OPT. 10 EN



Reinforced 125mm. diam steel castors, 2 with brake

OPT. 11/FO EN



Surcharge for contrasting worktop in Formica color

OPT. 14/C EN



Intermediate floor, compartment mod. neutral and warm

OPT. 15-C/LAM EN



Niche for heated modules - Laminated wood

OPT. 15-C/FO EN

Niche for heated modules - Formica

OPT. 16/LAM EN



Upper shelf top with increased depth and rear containing edge - Laminated wood

OPT. 16/FO EN



Upper shelf top with increased depth and rear containing edge - Formica

OPT. 17 EN



Intermediate custom module

OPT. 17CH EN



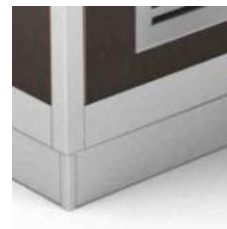
Custom head module

OPT. PZ EN



Feet

OPT. Z EN



Aluminium coated PVC feet skirting

OPT. ADS EN



Customized adhesive sticker

OPT. UK EN



Surcharge for UK plug

OPT. 45CUT EN



45° cut for optional 6/7/8

Finiture/Finishes

LAR - SILVER



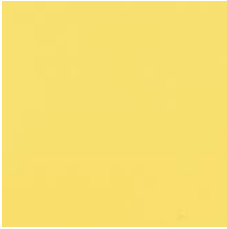
SILVER

LRS - ROSE



STANDARD - LAMINATED
WOOD

LZA - SAFFRON



STANDARD - LAMINATED
WOOD

LIM - LIME



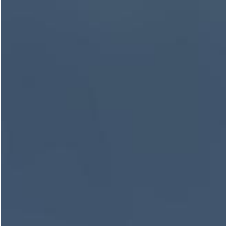
STANDARD - LAMINATED
WOOD

LSK - SKY



SKY

LOC - OCEAN



OCEAN

LER - IVY



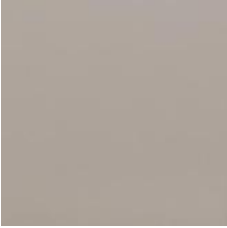
IVY

LSV - SAGE



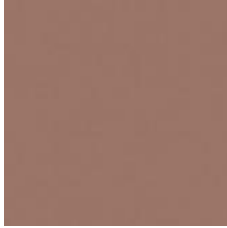
SAGE

LCP - CAPPUCCINO



CAPPUCCINO

LTC - CLAY



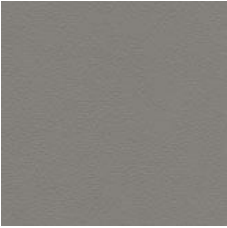
CLAY

LNI - NIAGARA



NIAGARA

LGR - GREY



STANDARD - LAMINATED
WOOD

LBV - VEINED WHITE



STANDARD - LAMINATED
WOOD

LWS - WHITE SAND



WHITE SAND

LBE - BIRCH



STANDARD - LAMINATED
WOOD

LNE - GREY FOG



STANDARD - LAMINATED
WOOD

LOM - ELM



STANDARD - LAMINATED
WOOD

LNO - WALNUT



STANDARD - LAMINATED
WOOD

LWE - WENGE'



STANDARD - LAMINATED
WOOD

LAN - ANTHRACITE



STANDARD - LAMINATED
WOOD

LNV - VEINED BLACK



STANDARD - LAMINATED
WOOD