



ATHENA 5 RV/M WALL

SKU: 01000ATH3MRVIEW

Refrigerated buffet with laminated wood structure and rear mirror to increase visual depth and offer a wider upper shelf. For aesthetic continuity, the compressor unit ventilation grids are cut directly into the wood structure. Capacity modules: 3-4-5-6 GN 1/1 according to model. Electrical lowerable or fix Plexyglas®s sneezeguard (Athena /M). Available with static or ventilated refrigeration, with 26 cm well or Hanex® glass counter. Digital thermostat (2°/ 8°) and LED lighting. Two polyamide castors with brake as standard. GN pans not included.



Ø75

GN

5 GN 1/1 up to h.150



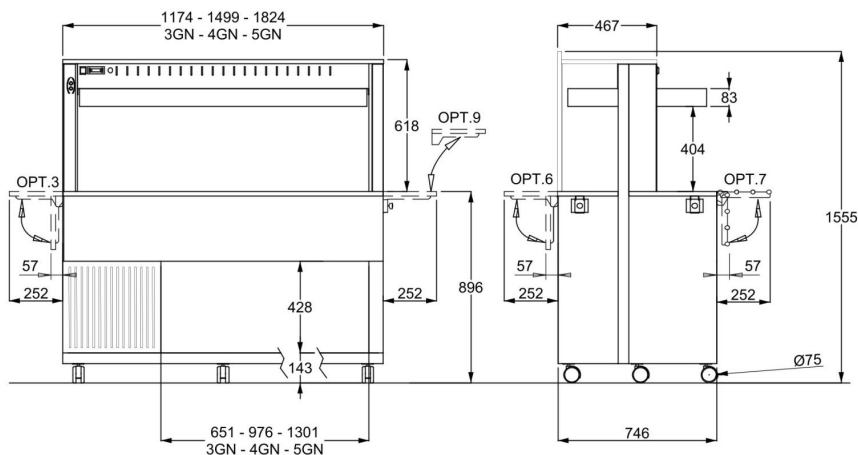
642,5 W



3



2



Optional/Options

OPT. 3 EN



Laminated wood folding dish-holder on short side

OPT. 3-SST EN



Foldable dish holder short side - Stainless steel

OPT. 3-TUB EN



Tube st. steel dish-holder on short side

OPT. 4 EN



Full lower closure w/doors

OPT. 5 EN



Removable display grid

OPT. 6 EN



Wooden folding dish-holder

OPT. 7 EN



Folding S/stainless steel tube trayholder

OPT. 8 EN



Foldable tray slide

OPT. 9-A EN



Removable long tray slide on short side in laminated wood

OPT. 9-TUBA EN



Removable long tray slide on short side in stainless steel tube

OPT. 9-SSTA EN



Removable long tray slide on short side in stainless steel

OPT. 9-C EN



Removable tray slide on short side in laminated wood, for wall leaning

OPT. 9C-TUBA EN



Removable tray slide on short side in stainless steel tube, for wall leaning

OPT. 9C-SSTA EN



Removable tray slide on short side in stainless steel, for wall leaning

OPT. 10 EN



Reinforced 125mm. diam steel castors, 2 with brake

OPT. 11/FO EN



Surcharge for contrasting worktop in Formica color

OPT. 14/F EN



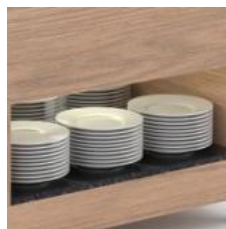
Intermediate floor, compartment mod. refrigerated

OPT. 15-F/LAM EN



Niche for refrigerated modules - Laminated wood

OPT. 15-F/FO EN



Niche for refrigerated modules - Formica

OPT. 16/LAM EN



Upper shelf top with increased depth and rear containing edge - Laminated wood

OPT. 16/FO EN



Upper shelf top with increased depth and rear containing edge - Formica

OPT. 17 EN



Intermediate custom module

OPT. 17CH EN



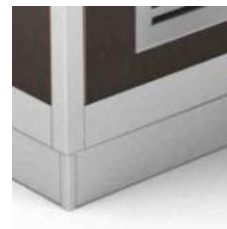
Custom head module

OPT. PZ EN



Feet

OPT. Z EN



Aluminium coated PVC feet skirting

OPT. ADS EN



Customized adhesive sticker

OPT. UK EN



Surcharge for UK plug

OPT. HZ6 EN



Compressor 60Hz

OPT. 45CUT EN



45° cut for optional 6/7/8

Finiture/Finishes

LAR - SILVER



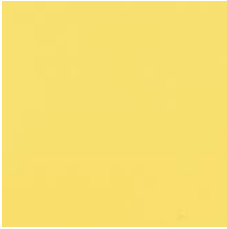
SILVER

LRS - ROSE



STANDARD - LAMINATED WOOD

LZA - SAFFRON



STANDARD - LAMINATED WOOD

LIM - LIME



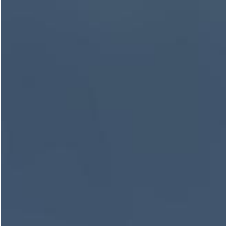
STANDARD - LAMINATED WOOD

LSK - SKY



SKY

LOC - OCEAN



OCEAN

LER - IVY



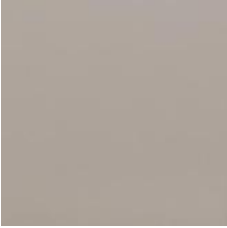
IVY

LSV - SAGE



SAGE

LCP - CAPPUCCINO



CAPPUCCINO

LTC - CLAY



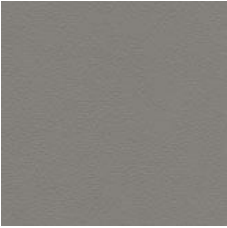
CLAY

LNI - NIAGARA



NIAGARA

LGR - GREY



STANDARD - LAMINATED WOOD

LBV - VEINED WHITE



STANDARD - LAMINATED WOOD

LWS - WHITE SAND



WHITE SAND

LBE - BIRCH



STANDARD - LAMINATED WOOD

LNE - GREY FOG



STANDARD - LAMINATED WOOD

LOM - ELM



STANDARD - LAMINATED WOOD

LNO - WALNUT



STANDARD - LAMINATED WOOD

LWE - WENGE'



STANDARD - LAMINATED WOOD

LAN - ANTHRACITE



STANDARD - LAMINATED WOOD

LNV - VEINED BLACK



STANDARD - LAMINATED
WOOD