



## ATHENA 4 PC/HALO

SKU: 01000HALO4FPC

Heated buffets with laminated wood structure and upper fixed sneezeguard. Capacity 4 GN 1/1 (pans not included). Tempered black glass countertop with stainless steel frame. Dry heating with digital thermostat (no induction). Power cable equipped with industrial plug. Halogen lamps with independent lighting switch, white light.



Ø75

GN

4 GN 1/1 up to h.200



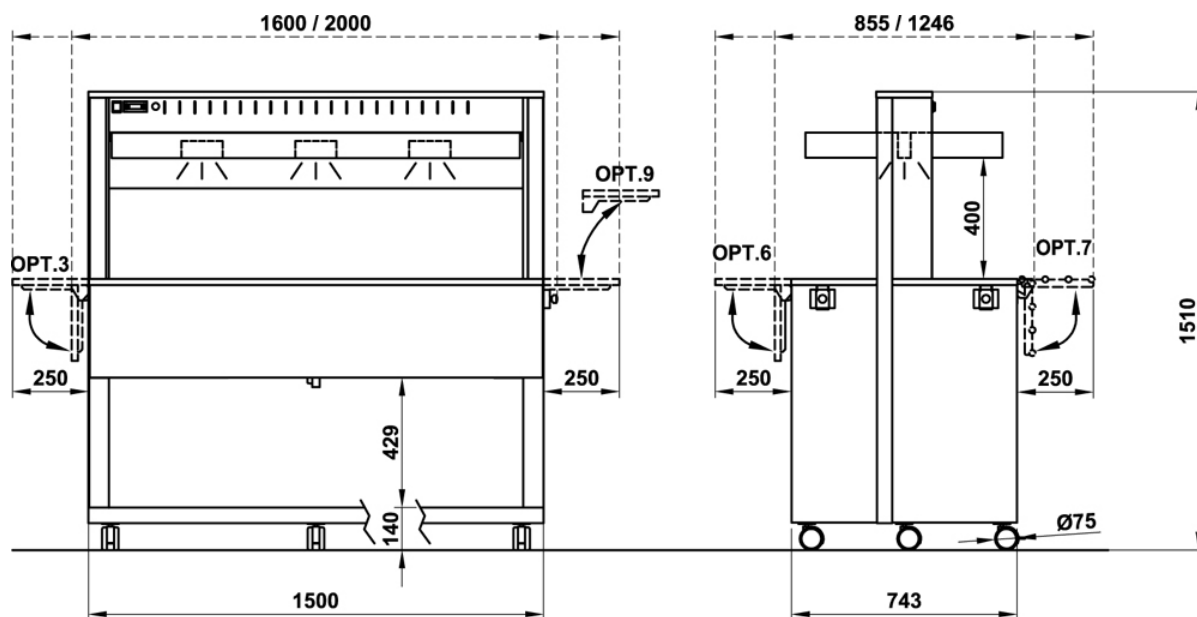
2393 W



3



2



## Optional/Options

**OPT. 3 EN**



Laminated wood folding dish-holder on short side

**OPT. 3-SST EN**



Foldable dish holder short side - Stainless steel

**OPT. 3-TUB EN**



Tube st. steel dish-holder on short side

**OPT. 4 EN**



Full lower closure w/doors

**OPT. 5 EN**



Removable display grid

**OPT. 6 EN**



Wooden folding dish-holder

**OPT. 7 EN**



Folding S/stainless steel tube trayholder

**OPT. 8 EN**



Foldable tray slide

**OPT. 9-A EN**



Removable long tray slide on short side in laminated wood

**OPT. 9-TUBA EN**



Removable long tray slide on short side in stainless steel tube

**OPT. 9-SSTA EN**



Removable long tray slide on short side in stainless steel

**OPT. 9-C EN**



Removable tray slide on short side in laminated wood, for wall leaning

**OPT. 9C-TUBA EN**



Removable tray slide on short side in stainless steel tube, for wall leaning

**OPT. 9C-SSTA EN**



Removable tray slide on short side in stainless steel, for wall leaning

**OPT. 10 EN**



Reinforced 125mm. diam steel castors, 2 with brake

**OPT. 11/FO EN**



Surcharge for contrasting worktop in Formica color

**OPT. 14/F EN**



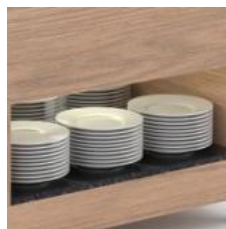
Intermediate floor, compartment mod. refrigerated

**OPT. 15-F/LAM EN**



Niche for refrigerated modules - Laminated wood

**OPT. 15-F/FO EN**



Niche for refrigerated modules - Formica

**OPT. 16/LAM EN**



Upper shelf top with increased depth and rear containing edge - Laminated wood

**OPT. 16/FO EN**



Upper shelf top with increased depth and rear containing edge - Formica

**OPT. 17 EN**



Intermediate custom module

**OPT. 17CH EN**



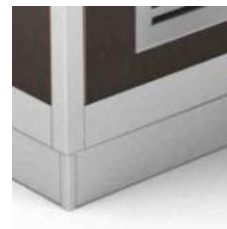
Custom head module

**OPT. PZ EN**



Feet

**OPT. Z EN**



Aluminium coated PVC feet skirting

**OPT. UK EN**



Surcharge for UK plug

**OPT. ADS EN**



Customized adhesive sticker

**OPT. HZ6 EN**



Compressor 60Hz

**OPT. 45CUT EN**



45° cut for optional 6/7/8

Finiture/Finishes

LAR - SILVER



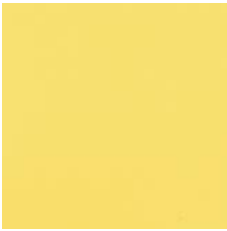
SILVER

LRS - ROSE



STANDARD - LAMINATED  
WOOD

LZA - SAFFRON



STANDARD - LAMINATED  
WOOD

LIM - LIME



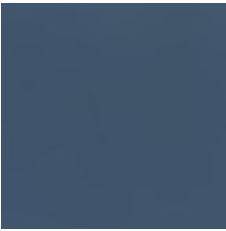
STANDARD - LAMINATED  
WOOD

LSK - SKY



SKY

LOC - OCEAN



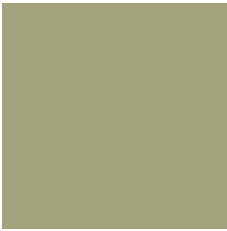
OCEAN

LER - IVY



IVY

LSV - SAGE



SAGE

LCP - CAPPUCCINO



CAPPUCCINO

LTC - CLAY



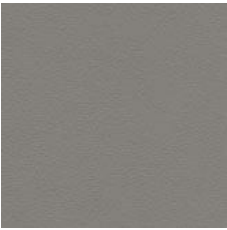
CLAY

LNI - NIAGARA



NIAGARA

LGR - GREY



STANDARD - LAMINATED  
WOOD

LBV - VEINED WHITE



STANDARD - LAMINATED  
WOOD

LWS - WHITE SAND



WHITE SAND

LBE - BIRCH



STANDARD - LAMINATED  
WOOD

LNE - GREY FOG



STANDARD - LAMINATED  
WOOD

LOM - ELM



STANDARD - LAMINATED  
WOOD

LNO - WALNUT



STANDARD - LAMINATED  
WOOD

LWE - WENGE'



STANDARD - LAMINATED  
WOOD

LAN - ANTHRACITE



STANDARD - LAMINATED  
WOOD

LNV - VEINED BLACK



STANDARD - LAMINATED  
WOOD