



ATHENA 3 BM

SKU: 01000ATH3FBM

Heated buffet with laminated wood structure, capacity 3 GN 1/1. Upper fixed Plexiglass sneezeguard and lighting with LED. AISI 304 stainless steel well, 26 cm. deep, equipped with drain cock. Bain marie heating with heating elements placed underneath the well, temperature controlled by digital thermostat. The buffet is equipped with industrial plug. Two castors with brake \varnothing 75 mm included.



Ø75

GN

3 GN 1/1 up to h.200



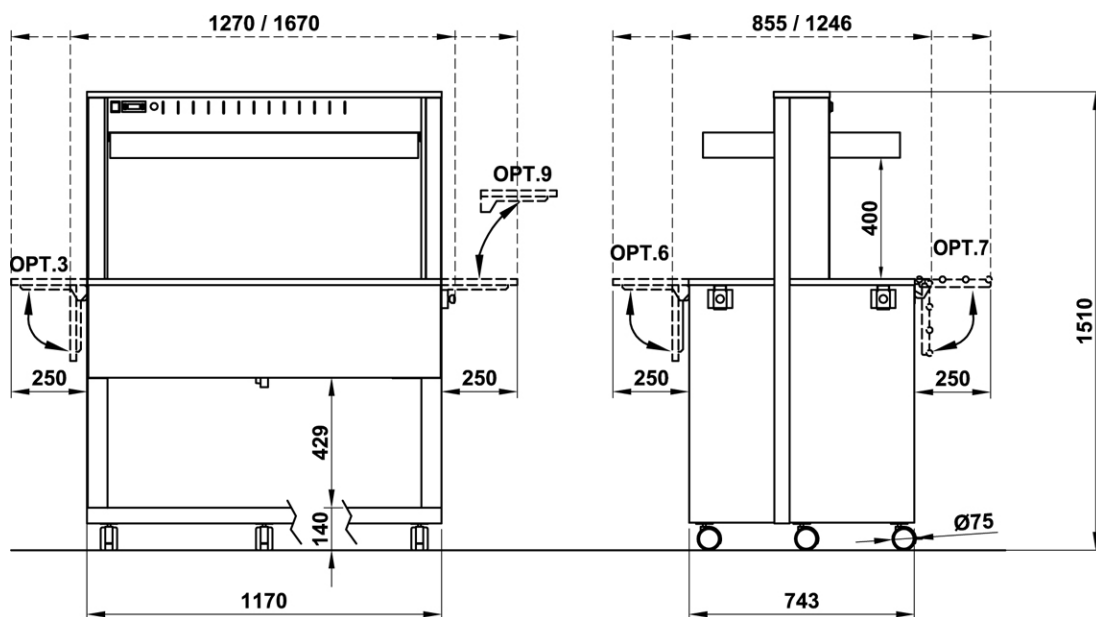
2263 W



3



2



Optional/Options

OPT. 3 EN



Laminated wood folding dish-holder on short side

OPT. 3-SST EN



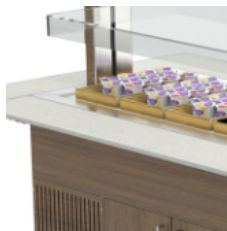
Foldable dish holder short side - Stainless steel

OPT. 3-TUB EN



Tube st. steel dish-holder on short side

OPT. 3/FO EN



Foldable dish holder (short side) - Formica

OPT. 4 EN



Full lower closure w/doors

OPT. 5 EN



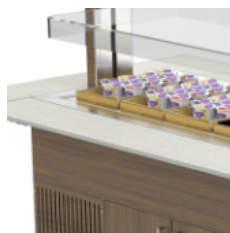
Removable display grid

OPT. 6 EN



Wooden folding dish-holder

6/FO



Foldable dish holder - Formica

OPT. 7 EN



Folding S/steel tube trayholder

OPT. 8 EN



Foldable tray slide

OPT. 9-A EN



Removable long tray slide on short side in laminated wood

OPT. 9-TUBA EN



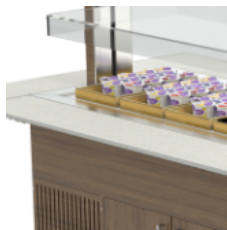
Removable long tray slide on short side in stainless steel tube

OPT. 9-SSTA EN



Removable long tray slide on short side in stainless steel

OPT. 9A/FO EN



Removable long tray slide for self-service island - Formica

OPT. 9-C EN



Removable tray slide on short side in laminated wood, for wall leaning

OPT. 9C-TUBA EN



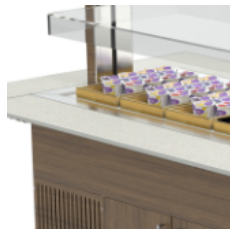
Removable tray slide on short side in stainless steel tube, for wall leaning

OPT. 9C-SSTA EN



Removable tray slide on short side in stainless steel, for wall leaning

OPT. 9C/FO EN



Removable tray slide on short side, for wall leaning buffets - Formica

OPT. 10 EN



Reinforced 125mm. diam steel castors, 2 with brake

OPT. 14/C EN



Intermediate floor, compartment mod. neutral and warm

OPT. 15-C/LAM EN



Niche for heated modules - Laminated wood

OPT. 15-C/FO EN

Niche for heated modules - Formica

OPT. 16/LAM EN



Upper shelf top with increased depth and rear containing edge - Laminated wood

OPT. 16/FO EN



Upper shelf top with increased depth and rear containing edge - Formica

OPT. 17 EN



Intermediate custom module

OPT. 17CH EN



Custom head module

OPT. PZ EN



Feet

OPT. Z EN



Aluminium coated PVC feet skirting

OPT. ADS EN



Customized adhesive sticker

OPT. UK EN



Surcharge for UK plug

OPT. 45CUT EN



45° cut for optional 6/7/8

DIST/G



Stainless steel dividers GN 1/1

DIST/M



Stainless steel dividers GN 1/2

Finiture/Finishes

LAR - SILVER



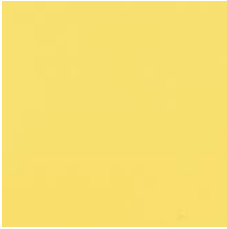
SILVER

LRS - ROSE



STANDARD - LAMINATED
WOOD

LZA - SAFFRON



STANDARD - LAMINATED
WOOD

LIM - LIME



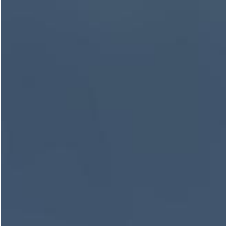
STANDARD - LAMINATED
WOOD

LSK - SKY



SKY

LOC - OCEAN



OCEAN

LER - IVY



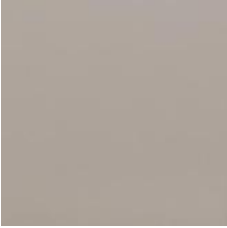
IVY

LSV - SAGE



SAGE

LCP - CAPPUCCINO



CAPPUCCINO

LTC - CLAY



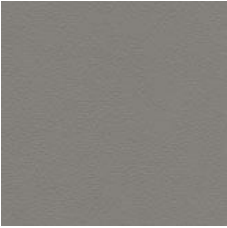
CLAY

LNI - NIAGARA



NIAGARA

LGR - GREY



STANDARD - LAMINATED
WOOD

LBV - VEINED WHITE



STANDARD - LAMINATED
WOOD

LWS - WHITE SAND



WHITE SAND

LBE - BIRCH



STANDARD - LAMINATED
WOOD

LNE - GREY FOG



STANDARD - LAMINATED
WOOD

LOM - ELM



STANDARD - LAMINATED
WOOD

LNO - WALNUT



STANDARD - LAMINATED
WOOD

LWE - WENGE'



STANDARD - LAMINATED
WOOD

LAN - ANTHRACITE



STANDARD - LAMINATED
WOOD

LNV - VEINED BLACK



STANDARD - LAMINATED
WOOD