



## PERSEO 75

SKU: 01500PER/A175

Waiter station on castors made of laminated wood for restaurant halls. Equipped with 1 drawer with inner dividers for cutlery, 1 door with inner height-adjustable shelf and 1 open compartment with 2 height-adjustable shelves. Instead of the drawers an open 6-compartment cutlery holder is available (opt. PP/F).



1



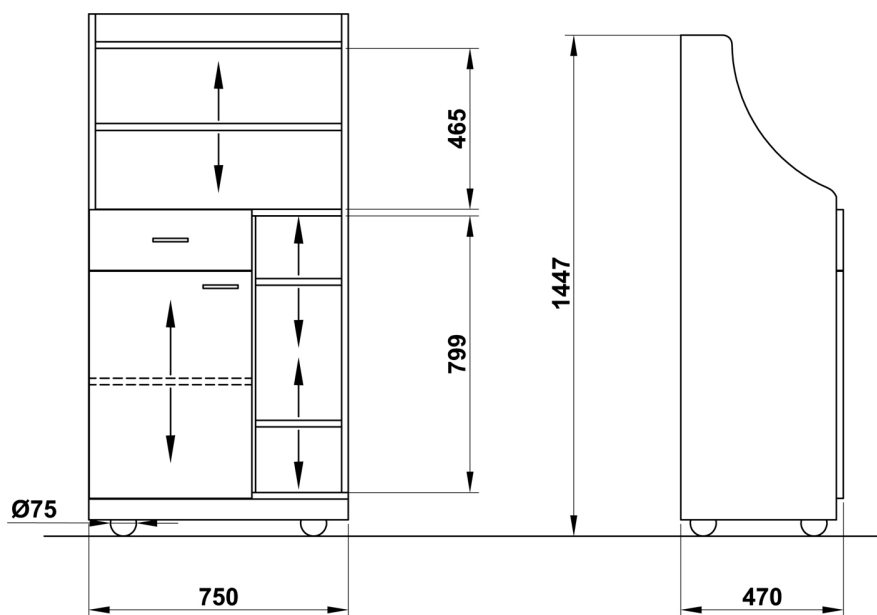
1



Ø75



4



# Optional/Options

K	PP/F	P-SHELF
A close-up photograph of a light-colored wooden cabinet door featuring a silver-colored metal lock mechanism with a keyhole and a black plastic strike plate.	A photograph showing a row of open, dark-colored compartments within a kitchen cabinet, designed for storing cutlery.	A photograph of a light-colored wooden cabinet interior with an additional horizontal shelf installed, providing extra storage space.
Door/Drawer lock (x1)	Open cutlery compartments	Extra shelf

Finiture/Finishes

LAR - SILVER



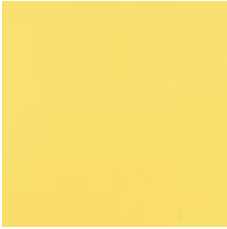
SILVER

LRS - ROSE



STANDARD - LAMINATED  
WOOD

LZA - SAFFRON



STANDARD - LAMINATED  
WOOD

LIM - LIME



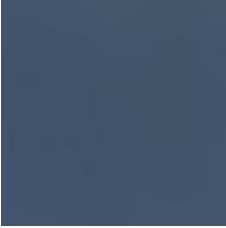
STANDARD - LAMINATED  
WOOD

LSK - SKY



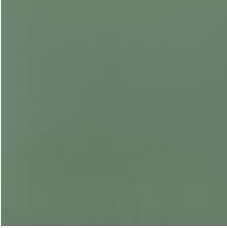
SKY

LOC - OCEAN



OCEAN

LER - IVY



IVY

LSV - SAGE



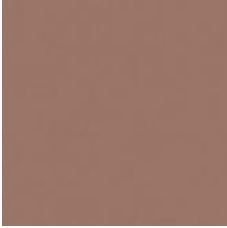
SAGE

LCP - CAPPUCCINO



CAPPUCCINO

LTC - CLAY



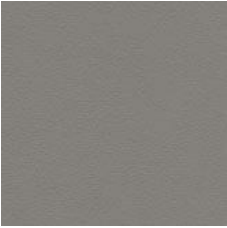
CLAY

LNI - NIAGARA



NIAGARA

LGR - GREY



STANDARD - LAMINATED  
WOOD

LBV - VEINED WHITE



STANDARD - LAMINATED  
WOOD

LWS - WHITE SAND



WHITE SAND

LBE - BIRCH



STANDARD - LAMINATED  
WOOD

LNE - GREY FOG



STANDARD - LAMINATED  
WOOD

LOM - ELM



STANDARD - LAMINATED  
WOOD

LNO - WALNUT



STANDARD - LAMINATED  
WOOD

LWE - WENGE'



STANDARD - LAMINATED  
WOOD

LAN - ANTHRACITE



STANDARD - LAMINATED  
WOOD

LNV - VEINED BLACK



STANDARD - LAMINATED  
WOOD