

Instruction manual

PLEIADI T

PLEIADI C



Summary



1. Instruction warnings.....	2
2. Safety and Right Use Warnings.....	2
3. Warranty.....	2
4. Appliance Start Up.....	2
5. Instruction for use.....	3
5.1 Technical Features	4
6. Assembly and spareparts	4
7. Cleaning and Maintenance	4
8. Troubleshooting.....	4
9. Wiring diagrams.....	5
10. Disposal.....	6

1. Instruction warnings

User has to hold the whole instructions. User must store up this document in case of use. The manufacturer is not responsible of any damage incurred due to the failure of improper use of this manual.

All measures in this manual are in mm.

2. Safety and Right Use Warnings



The Rocam Losi products meet the latest technological evolutions and current safety guidelines. **PLEIADI T & PLEIADI C**, object of this booklet, is designed to be in compliance with directives and field laws, in order to guarantee a safe and reliable product.

Any other use will be considered inappropriate to the original destination. The producer is not responsible of any damage caused by an improper use. Responsibility lies only on user. A proper use also includes compliance with the instructions for use and installation and any additional documentation as well as the conditions of inspection and maintenance.

3. Warranty

We thank you for purchasing a Rocam Losi product, designed and produced for a professional environment. Due to commercial and construction requirements, the manufacturer reserves the right to make changes in order to enhance the quality and use of product. Rocam Losi s.r.l., in compliance with European Community legislation, grants its products for 12 months. This warranty does not include electrical parts, labour and all replacements related to an improper use of the good. Any manipulation carried out automatically excludes the liability of the manufacturer. The products or parts to be replaced or repaired for unequivocal defects in workmanship and materials used must be in a “free port” at the offices of the producer, who after a careful inspection, will repair or replace them. The repairs are carried out exclusively at the headquarters of the manufacturer, and none cost incurred by the customer for repairs will be refunded by the manufacturer unless explicitly agreed.

ANY MANIPULATION AUTOMATICALLY EXCLUDES THE MANUFACTURER’S LIABILITY AND THE WARRANTY ON THIS PRODUCT.

4. Appliance Start Up



The manufacturer declines every responsibility of damage of someone or something caused by the failure to comply with the instructions of this manual.

After the unpacking of the item from its packing, proceed by removing the adhesive plastic tape before starting up the product. Any residual glue has to be removed carefully (do not use abrasive cleaners).

The device is designed to run on AC to the voltage specified on the technical data plate. The grounding line is marked by the colours yellow/green and must not be interrupted.

The device is provided with a cable in accordance with the CE regulations and with a schuko plug (that can be replaced, when necessary, with a different plug, suitable for the specified wattage and in accordance to the current regulations and guidelines; when necessary, replace the provided cable with a new one with the same features).

5. Instruction for use

PLEIADI T



Before switching the appliance on, connect it to the power supply using the power supply cable that must be plugged into the socket **(1)**.

Push the switch **(2)** to turn on the appliance, the temperature is automatically set in a range between 70/85 ° C. The indicator light on the switch **(3)** remains on until the pre-set temperature is reached; when the set temperature is reached, the warming light goes out.

Warning: it is not recommended to place liquid food inside the thermal box!

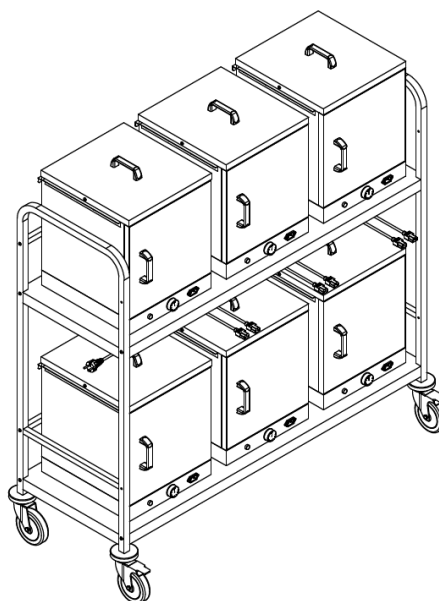
This appliance is intended to be used in household and similar applications such as:

- staff kitchen areas in shops, offices and other working environments
- farm houses
- by clients in hotels, motels and other residential type environments
- bed and breakfast type environments

The product is built for the sole purpose of keeping food warm at the desired temperature, do not use it for cooking.

PLEIADI C

The hot box warming stations PLEIADI C are designed to stock up to 6 ROCAM LOSI hot boxes mod. PLEIADI T, 3 on the bottom shelf and 3 on the top shelf. To turn on the hot box, place it on the shelf, connect it with one of the 6 power cable, and turn on the hot box's thermostat to the desired temperature.



5.1 Technical Features

	<i>Power supply</i>	<i>Max rated output</i>
PLEIADI T	230 V	500 W
PLEIADI C	230 V	6 x 500 W

6. Assembly and spare parts

Please find attached assembly instructions and components list at pages **I**, **II** and **III** at the end of this booklet.

7. Cleaning and Maintenance



WARNING:

Before any cleaning operation unplug the device from the electrical system. Never wash the appliance with water jets in order to prevent water seepage inside the electrical components.

The use of this appliance is not permitted to people (including children) of reduced physical and mental ability or lacking in experience in the use of electrical appliances, unless they are supervised or instructed by adults or people responsible for their safety.



Before any cleaning operation wait for the appliance to be cooled down (wait at least one hour from the end of the service).

Use specific cleaners on stainless steel surfaces, in any case do not use abrasives.

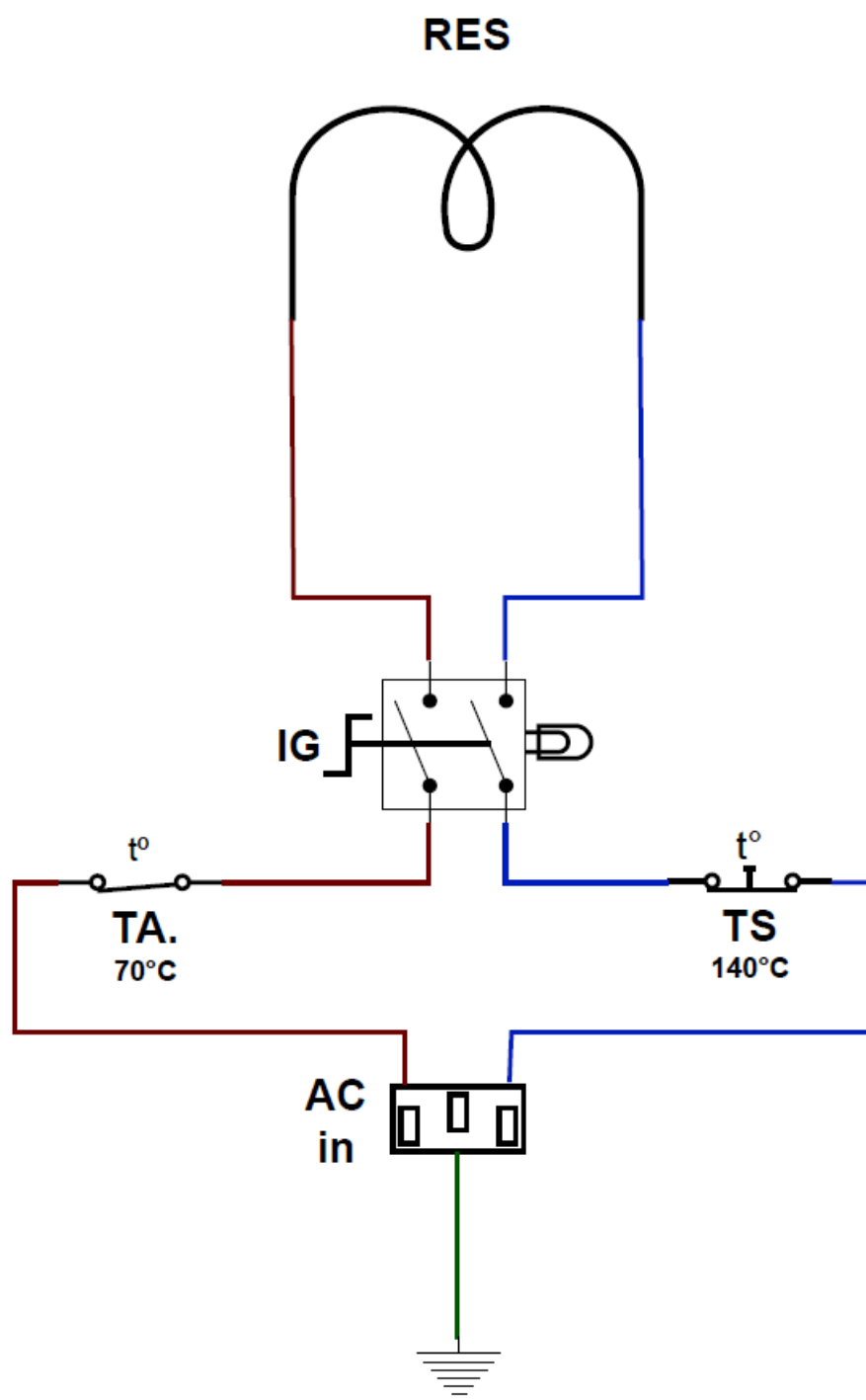
The appliance is provided with a safety thermostat with automatic reset which interrupts the power supply in case of overheating.

The appliance resumes its normal operation with the standard operating temperature.

8. Troubleshooting

<i>Problem</i>	<i>Possible reason</i>	<i>Solution</i>
The hot box does not warm up	Power failure	Check the presence of power in the electric system
	Heating element is burned	Contact the retailer
	Thermostat is broken	Contact the retailer
	The power cable is worn-out	Replace the cable with a suitable one
The operating light does not light up	The hot box has reached the temperature	-
	The switch light is burned	Contact the retailer
PLEIADI C trolley does not warm up the hot boxes	Power failure	Check the presence of power in the electric system
	The connecting cable/cables are worn-out	Replace the cable/cables with a suitable one
	The power cable is worn-out	Replace the cable with a suitable one

9. Wiring diagrams



<i>Rif.</i>	<i>Descrizione</i>
AC	Electrical inlet
IG	Luminous switch
TA	Automatic thermostat 70°C
TS-140°C	Safety thermostat 140°C
RES	Heating element

10. Disposal



This marking shown on the product or its literature, indicates that it should not be disposed with other household wastes at the end of its working life.

To prevent possible harm to the environment or human health from uncontrolled waste disposal, please separate this from other types of wastes and recycle it responsibly to promote the sustainable reuse of material resources.

Household users should contact either the retailer where they purchased this product, or their local government office, for details of where and how they can take this item for environmentally safe recycling.

Business users should contact their supplier and check the terms and conditions of the purchase contract. This product should not be mixed with other commercial wastes for disposal.