

# RXDL 604 PLUS V2.4

*Bakery oven*



Ref. 710841



## EQUIPMENT-FEATURES

- Screen TFT **E**asy **P**ad Control
- Adjustable humidity 0/100%
- Cooking phases
- Recipe book (up to 100 recipes)
- HACCP data download
- Automatic preheating
- Favourite recipes (up to 6 programs)
- Uploading/downloading of user recipes
- Uploading images for recipes
- Mobile device connectivity\*
- 2 speeds turbine
- Standard equipment 4 wiretrays

## TECHNICAL CHARACTERISTICS

**Electric power** 6.300W

**Maximum temperature** 260°C

**Weight** 60kg

**Voltage** 400V-50/60Hz

**Connection** Three phase 3F+N+T

**Internal dimensions (W)** 680x(D) 470x(H) 365mm

**External dimensions (W)** 820x(D) 820x(H) 570mm

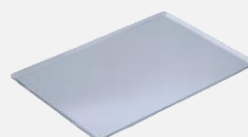
**Change door opening**

**Monophase change**

## CAPACITY

**4 trays 600x400**

**4 trays GN1/1**



# RXDL 604 PLUS V2.4

*Specific accessories*



## Stand RX 60/40

Ref. 710549



(W)810x(D)700x(H)850mm

## Stand RX GN1/1

Ref. 710550



(W)810x(D)700x(H)850mm

## Wheels

Ref. 710286



## Fumes condenser kit

### SERIE RX

Ref. 710551

(W)170x(D)70x(H)400mm

### SERIE RX H2O

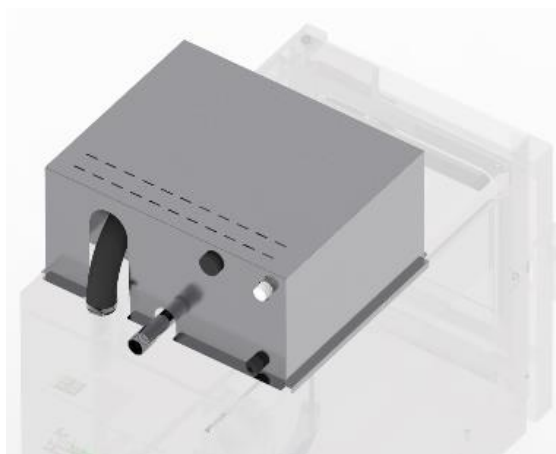
Ref. 710552

(W)720x(D)85x(H)450mm

### SERIE RX DUO

Ref. 710553

(W)580x(D)120x(H)180mm



## Superposition kit RX 60/40

Ref. 710556



(W)820x(D)800x(H)40mm

## DECLARACIÓN UE DE CONFORMIDAD EU DECLARATION OF CONFORMITY

Directiva(s) del Consejo con la(s) que se declara conformidad:  
*Council Directive(s) to which conformity is declared:*

**DC 2014/35/EU + DC 2014/30/EU + DC 2011/65/EU**

Aplicación de las Normas:  
*Application of the Standards:*

**UNE-EN 60335-1:2012 + AC:2014 + A11:2014 + A13:2017 + A14:2014 + A2:2020 + A1:2020; UNE-EN 60335-2-42:2004 + Corr:2007 + A1:2008 + A11:2012; UNE-EN 55014-1:2017 + A11:2021; UNE-EN 55014-2:2015; UNE-EN 61000-3-2:2014; UNE-EN 61000-3-3:2013 + A1:2020**

Fabricante / *Manufacturer's*  
*address:*

**FM CALEFACCIÓN S.L.**  
**CIF: B-14343594**

Dirección / *Manufacturer's*  
*address:*

**CTRA. de Rute km.2.700, C.P.:14900, Lucena**  
**Cordoba, España**

Tipo de aparato / *Type of device:*

**HORNO / OVEN**

Marca / *Trade.:*

**FM CALEFACCIÓN**

Modelo / *Model no.:*

**RXDL 604 PLUS V2.4 N/S: 23XXXXXXXXXX**

**Nosotros, los abajo firmantes, declaramos bajo nuestra exclusiva responsabilidad que el equipo especificado cumple con la(s) Directiva(s) y Norma(s) mencionadas**

***We, the undersigned, hereby declare under our sole responsibility that the specified equipment is in conformity with the above Directive(s) and Standard(s)***

Lugar / *Place:* **Lucena**

Firma / *Signature:* **B-14343594**

Fecha / *Date:* **01/01/2023**



# RXDL 604 PLUS V2.4



TECHNICAL CHARACTERISTICS		CONNECTION	
Net Weight (oven)		1	Electrical connection
Gross Weight (oven+packaging)		2	Fumes outlet Ø30mm
Supply voltage	400Vac - Three phase	3	Safety thermostat reset
Frequency	50Hz - 60Hz	4	Safety distance ≥ 120mm
Power cable	Hose 3F+N+T 4mm <sup>2</sup>	5	Drainage Ø30mm
Noise level	Below to 70dB	6	Water connection 3/4"
Electric power	6.300W	7	USB connection
Thermal power	6.000W	8	On/Off switch

\*Dimensions in mm

