

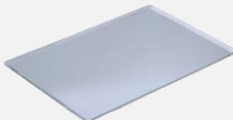

# STZ 633 V5

*Pizza oven*



Ref. 710588



TECHNICAL CHARACTERISTICS	FEATURES - FUNCTIONS
<p><b>Electric power</b> 8800 W</p> <p><b>Maximum temperature</b> 350 °c</p> <p><b>Weight</b> 140 kg</p> <p><b>Voltage</b> 400 V-50/60 Hz</p> <p><b>Connection</b> Three phase 3F+N+T</p> <p><b>Internal dimensions</b> (W)1230x(D)700x(H)170 mm</p> <p><b>External dimensions</b> (W)1500x(D)990x(H)380 mm</p> <p><b>Cooking surface</b> 1230x700 mm</p> <p><b>Humidifier</b> (ref. 710602)</p>	<ul style="list-style-type: none"><li>• 5" touch screen</li><li>• High quality refractory material cooking surface</li><li>• LED chamber light</li><li>• Independent base/top temperature control</li><li>• 3/4" water inlet (models with humidifier)</li><li>• Stackable up to 4 levels</li></ul>
CAPACITY	
<p><b>3 trays 600x400</b></p> 	<p><b>Longitudinal tray position</b></p> 

# STP 643

*Specific accessories*



## Stands

### SP 642 H350

4 modules

Ref. 710595

(W)1090x(D)940x(H)350 mm

### SP 642 H650

3 modules

Ref. 710594

(W)1090x(D)940x(H)650 mm

### SP 642 H1000

1 or 2 modules

Ref. 710593

(W)715x(D)600x(H)1000 mm



### SP 643 H350

4 modules

Ref. 710598

(W)1500x(D)940x(H)1000 mm

### SP 643 H650

3 modules

Ref. 710597

(W)1500x(D)940x(H)650 mm

### SP 643 H1000

1 or 2 modules

Ref. 710596 |

(W)715x(D)600x(H)1000 mm



## Hood SP 643

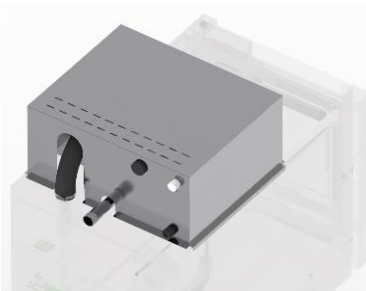
Ref. 710600



(W)1500x(D)1300x(H)300 mm

## Fumes Condenser kit SP

Ref. 710601



## DECLARACIÓN UE DE CONFORMIDAD EU DECLARATION OF CONFORMITY

Directiva(s) del Consejo con la(s) que se declara conformidad:

*Council Directive(s) to which conformity is declared:*

**DC 2014/35/EU + DC 2014/30/EU + DC 2011/65/EU**

Aplicación de las Normas:

*Application of the Standards:*

**UNE-EN 60335-1:2012 + AC:2014 + A11:2014 + A13:2017 + A14:2014 + A2:2020 + A1:2020; UNE-EN 60335-2-42:2004 + Corr:2007 + A1:2008 + A11:2012; UNE-EN 55014-1:2017 + A11:2021; UNE-EN 55014-2:2015; UNE-EN 61000-3-2:2014; UNE-EN 61000-3-3:2013 + A1:2020**

Fabricante / *Manufacturer's name:*

**FM CALEFACCIÓN S.L.  
CIF: B-14343594**

Dirección / *Manufacturer's address:*

**CTRA. de Rute km.2.700, C.P.:14900, Lucena  
Cordoba, Spain**

Tipo de aparato / *Type of device:*

**HORNO / OVEN**

Marca / *Trade.:*

**FM CALEFACCIÓN**

Modelo / *Model no.:*

**STP 643**

**N/S: 21XXXXXXXXXX**

**Nosotros, los abajo firmantes, declaramos bajo nuestra exclusiva responsabilidad que el equipo especificado cumple con la(s) Directiva(s) y Norma(s) mencionadas**

***We, the undersigned, hereby declare under our sole responsibility that the specified equipment is in conformity with the above Directive(s) and Standard(s)***

Lugar / *Place:* **Lucena**

Firma / *Signature:* **B-14343594**

Fecha / *Date:* **01/01/2021**



# STP 643



TECHNICAL CHARACTERISTICS		CONNECTIONS	
Empty unit weight		1	On/Off button
Unit+packaging weight		2	Hose connection
Supply voltage	400 Vac - three phase	3	Safety gap $\geq 120$ mm
Frequency	50/60 Hz	4	Fumes exit $\varnothing 50$ mm
Power cable	Hose 3F+N+T 4 mm <sup>2</sup>	5	USB connection
Sound pressure level	Below 70 dB		
Total power	8800 W		
Thermal power	8800 W		

\*Dimensions in mm

