

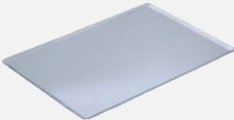

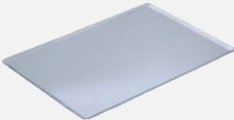

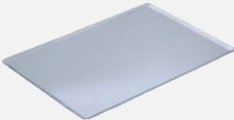

STZ 433 V5

Pizza oven



Ref. 710587



TECHNICAL CHARACTERISTICS	FEATURES - FUNCTIONS				
<p>Electric power 5600 W</p> <p>Maximum temperature 350 °c</p> <p>Weight 110 kg</p> <p>Voltage 400 V-50/60 Hz</p> <p>Connection Three phase 3F+N+T</p> <p>Internal dimensions (W)820x(D)700x(H)170 mm</p> <p>External dimensions (W)1090x(D)990x(H)380 mm</p> <p>Cooking surface 820x700 mm</p> <p>Humidifier (ref. 7110602)</p> <p>Change to single phase</p>	<ul style="list-style-type: none">• 5" touch screen• High quality refractory material cooking surface• LED chamber light• Independent base/top temperature control• 3/4" water inlet (models with humidifier)• Stackable up to 4 levels <table><tr><th colspan="2" data-bbox="754 1653 1485 1709">CAPACITY</th></tr><tr><td data-bbox="754 1709 1074 1933"><p>2 trays 600x400</p></td><td data-bbox="1074 1709 1485 1933"><p>Longitudinal tray position</p></td></tr></table>	CAPACITY		<p>2 trays 600x400</p> 	<p>Longitudinal tray position</p> 
CAPACITY					
<p>2 trays 600x400</p> 	<p>Longitudinal tray position</p> 				

STP 642

Specific accessories



Stands

SP 642 H350

4 modules

Ref. 710595

(W)1090x(D)940x(H)350 mm

SP 642 H650

3 modules

Ref. 710594

(W)1090x(D)940x(H)650 mm

SP 642 H1000

1 or 2 modules

Ref. 710593

(W)715x(D)600x(H)1000 mm



SP 643 H350

4 modules

Ref. 710598

(W)1500x(D)940x(H)1000 mm

SP 643 H650

3 modules

Ref. 710597

(W)1500x(D)940x(H)650 mm

SP 643 H1000

1 or 2 modules

Ref. 710596

(W)715x(D)600x(H)1000 mm



Hood SP 642

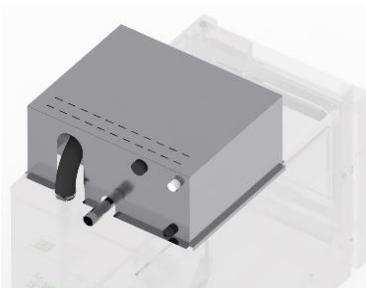
Ref. 710599



(W)1090x(D)1300x(H)300 mm

Fumes Condenser kit SP

Ref. 710601



DECLARACIÓN UE DE CONFORMIDAD EU DECLARATION OF CONFORMITY

Directiva(s) del Consejo con la(s) que se declara conformidad:
Council Directive(s) to which conformity is declared:

DC 2014/35/EU + DC 2014/30/EU + DC 2011/65/EU

Aplicación de las Normas:
Application of the Standards:

UNE-EN 60335-1:2012 + AC:2014 + A11:2014 + A13:2017 + A14:2014 + A2:2020 + A1:2020; UNE-EN 60335-2-42:2004 + Corr:2007 + A1:2008 + A11:2012; UNE-EN 55014-1:2017 + A11:2021; UNE-EN 55014-2:2015; UNE-EN 61000-3-2:2014; UNE-EN 61000-3-3:2013 + A1:2020

Fabricante / *Manufacturer's name:*

FM CALEFACCIÓN S.L.
CIF: B-14343594

Dirección / *Manufacturer's address:*

CTRA. de Rute km.2.700, C.P.:14900, Lucena
Cordoba, Spain

Tipo de aparato / *Type of device:*

HORNO / OVEN

Marca / *Trade.:*

FM CALEFACCIÓN

Modelo / *Model no.:*

STP 642

N/S: 21XXXXXXXXXX

Nosotros, los abajo firmantes, declaramos bajo nuestra exclusiva responsabilidad que el equipo especificado cumple con la(s) Directiva(s) y Norma(s) mencionadas

We, the undersigned, hereby declare under our sole responsibility that the specified equipment is in conformity with the above Directive(s) and Standard(s)

Lugar / *Place:* **Lucena**

Firma / *Signature:* **B-14343594**

Fecha / *Date:* **01/01/2021**



STP 642



TECHNICAL CHARACTERISTICS		CONNECTIONS	
Empty unit weight		1	On/Off button
Unit+packaging weight		2	Hose connection
Supply voltage	400 Vac - three phase	3	Safety gap ≥ 120 mm
Frequency	50/60 Hz	4	Fumes exit $\varnothing 50$ mm
Power cable	Hose 3F+N+T 4 mm ²	5	USB connection
Sound pressure level	Below 70 dB		
Total power	5600 W		
Thermal power	5600 W		

*Dimensions in mm

