

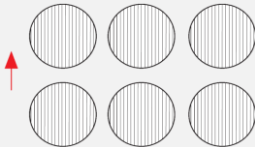
# STZ 633 M

*Pizza oven*



Ref. 710592



TECHNICAL CHARACTERISTICS	FEATURES - FUNCTIONS
<p><b>Electric power</b> 8800 W</p> <p><b>Maximum temperature</b> 400 °c</p> <p><b>Weight</b> 140 kg</p> <p><b>Voltage</b> 400 V-50/60 Hz</p> <p><b>Connection</b> Three phase 3F+N+T</p> <p><b>Internal dimensions</b> (W)1230x(D)700x(H)170 mm</p> <p><b>External dimensions</b> (W)1500x(D)990x(H)380 mm</p> <p><b>Cooking surface</b> 1230x700 mm</p> <p><b>Capacity</b> 6 x Ø330 mm</p>	<ul style="list-style-type: none"><li>• <i>Thermometer</i></li><li>• <i>High quality refractory material cooking surface</i></li><li>• <i>LED chamber light</i></li><li>• <i>Independent base/top temperature control</i></li><li>• <i>Stackable up to 4 levels</i></li></ul>
	CAPACITY
	<p><b>6 pizzas Ø330 mm</b></p> 

# STZ 633

*Specific accessories*



## Stands

### SP 642 H350

4 modules

Ref. 710595

(W)1090x(D)940x(H)350 mm

### SP 642 H650

3 modules

Ref. 710594

(W)1090x(D)940x(H)650 mm

### SP 642 H1000

1 or 2 modules

Ref. 710593

(W)715x(D)600x(H)1000 mm



### SP 643 H350

4 modules

Ref. 710598

(W)1500x(D)940x(H)1000 mm

### SP 643 H650

3 modules

Ref. 710597

(W)1500x(D)940x(H)650 mm

### SP 643 H1000

1 or 2 modules

Ref. 710596

(W)715x(D)600x(H)1000 mm



## Hood SP 643

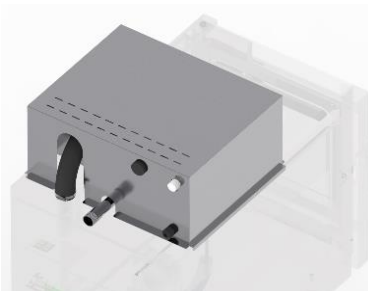
Ref. 710600



(W)1500x(D)1300x(H)300 mm

## Fumes Condenser kit SP

Ref. 710601



## DECLARACIÓN UE DE CONFORMIDAD EU DECLARATION OF CONFORMITY

Directiva(s) del Consejo con la(s) que se declara conformidad:

*Council Directive(s) to which conformity is declared:*

**DC 2014/35/EU + DC 2014/30/EU + DC 2011/65/EU**

Aplicación de las Normas:

*Application of the Standards:*

**UNE-EN 60335-1:2012 + AC:2014 + A11:2014 + A13:2017 + A14:2014 + A2:2020 + A1:2020; UNE-EN 60335-2-42:2004 + Corr:2007 + A1:2008 + A11:2012; UNE-EN 55014-1:2017 + A11:2021; UNE-EN 55014-2:2015; UNE-EN 61000-3-2:2014; UNE-EN 61000-3-3:2013 + A1:2020**

Fabricante / *Manufacturer's name:*

**FM CALEFACCIÓN S.L.  
CIF: B-14343594**

Dirección / *Manufacturer's address:*

**CTRA. de Rute km.2.700, C.P.:14900, Lucena  
Cordoba, Spain**

Tipo de aparato / *Type of device:*

**HORNO / OVEN**

Marca / *Trade.:*

**FM CALEFACCIÓN**

Modelo / *Model no.:*

**STZ 633**

**N/S: 21XXXXXXXXXX**

**Nosotros, los abajo firmantes, declaramos bajo nuestra exclusiva responsabilidad que el equipo especificado cumple con la(s) Directiva(s) y Norma(s) mencionadas**

***We, the undersigned, hereby declare under our sole responsibility that the specified equipment is in conformity with the above Directive(s) and Standard(s)***

Lugar / *Place:* **Lucena**

Firma / *Signature:* **B-14343594**

Fecha / *Date:* **01/01/2021**



# STZ 633



TECHNICAL CHARACTERISTICS		CONNECTIONS	
Empty unit weight		1	Bottom temperature regulation knob
Unit+packaging weight		2	Top temperature regulation knob
Supply voltage	400 Vac - three phase	3	Lamp switch
Frequency	50/60 Hz	4	On/Off button
Power cable	Hose 3F+N+T 4 mm <sup>2</sup>	5	Chamber temperature indicator
Sound pressure level	Below 70 dB	6	Hose connection
Total power	8800 W	7	Safety gap ≥ 120 mm
Thermal power	8800 W	8	Fumes exit Ø50 mm

\*Dimensions in mm

