

ST-G 400 S

Charcoal oven



Ref. 710802



Chimney control included



FUNCTIONS

- *Stainless steel construction*
- *Cast iron fire plan*
- *High quality internal insulation*
- *Working temperature between 250-350°C*
- *Temperature regulation (chimney system)*
- *Anti-impact door opening system*
- *Integrated temperature indicator*
- *Separate ash drawer*
- *Grease drawer*
- *Stainless steel grill included*
- *Alloy steel interior*

TECHNICAL CHARACTERISTICS

Ignition time 45 minutes (aprox)

Electric power 4,5kW

Diners 75-90

Working temperature 250°C - 350°C

Weight 240kg

Gas outlet diameter 120mm

External dimensions (W)740x(D)720x(H)680mm
(without accesories)

CAPACITY

1 tray 570x520mm

1 tray GN1/1






ST-G 400 S

Accessories



Specific accessories

MODEL	DIMENSIONS	
STAND ST-G 400 <i>Ref. 710734</i>	(W)720 x (D)650 x (H)800 mm	
CABINET ST-G 400 <i>Ref. 710737</i>	(W)720 x (D)650 x (H)800 mm	
ATEMPERATOR ST-G 400 <i>Ref. 710740</i>	(W)720 x (D)650 x (H)195 mm	

General accessories



CHIMNEY CONTROL

Ref. 710722



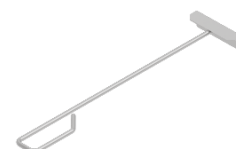
FIRE CONTROL

Ref. 710723



SPARK ARRESTER CAP

Ref. 710724



POKER

Ref. 710725 (L 450 mm)

Ref. 710726 (L 750 mm)





CLAMP

Ref. 710728



BRUSH

Ref. 710729



ASH SHOVEL

Ref. 710727



GRILL

Ref. 710731 (570 x 520 mm)

DECLARACIÓN UE DE CONFORMIDAD EU DECLARATION OF CONFORMITY

Directiva(s) del Consejo con la(s) que se declara conformidad:
Council Directive(s) to which conformity is declared:

Aplicación de las Normas:
Application of the Standards:

EN 13240:2002/A2:2005/AC:2006/AC:2007

Fabricante / *Manufacturer's* **FM CALEFACCIÓN S.L.**

Dirección / *Manufacturer's* **CTRA. de Rute km.2.700, C.P.:14900, Lucena**

Tipo de aparato / *Type of* **HORNO / OVEN**

Marca / *Trade.* **FM CALEFACCIÓN**

Modelo / *Model no.:* **ST-G400S** **N/S: 22XXXXXXXXXX**

Nosotros, los abajo firmantes, declaramos bajo nuestra exclusiva responsabilidad que el equipo especificado cumple con la(s) Directiva(s) y Norma(s) mencionadas

We, the undersigned, hereby declare under our sole responsibility that the specified equipment is in conformity with the above Directive(s) and Standard(s)

Este aparato esta destinado UNICAMENTE a uso profesional, y puede ser instalado en recintos abiertos o cerrados siempre que se lleven a cabo las indicaciones reflejadas en el manual de instrucciones del aparato.

Lugar / *Place:* **Lucena**

Firma / *Signature:* **B-14343594**

Fecha / *Date:* **01/01/2022**

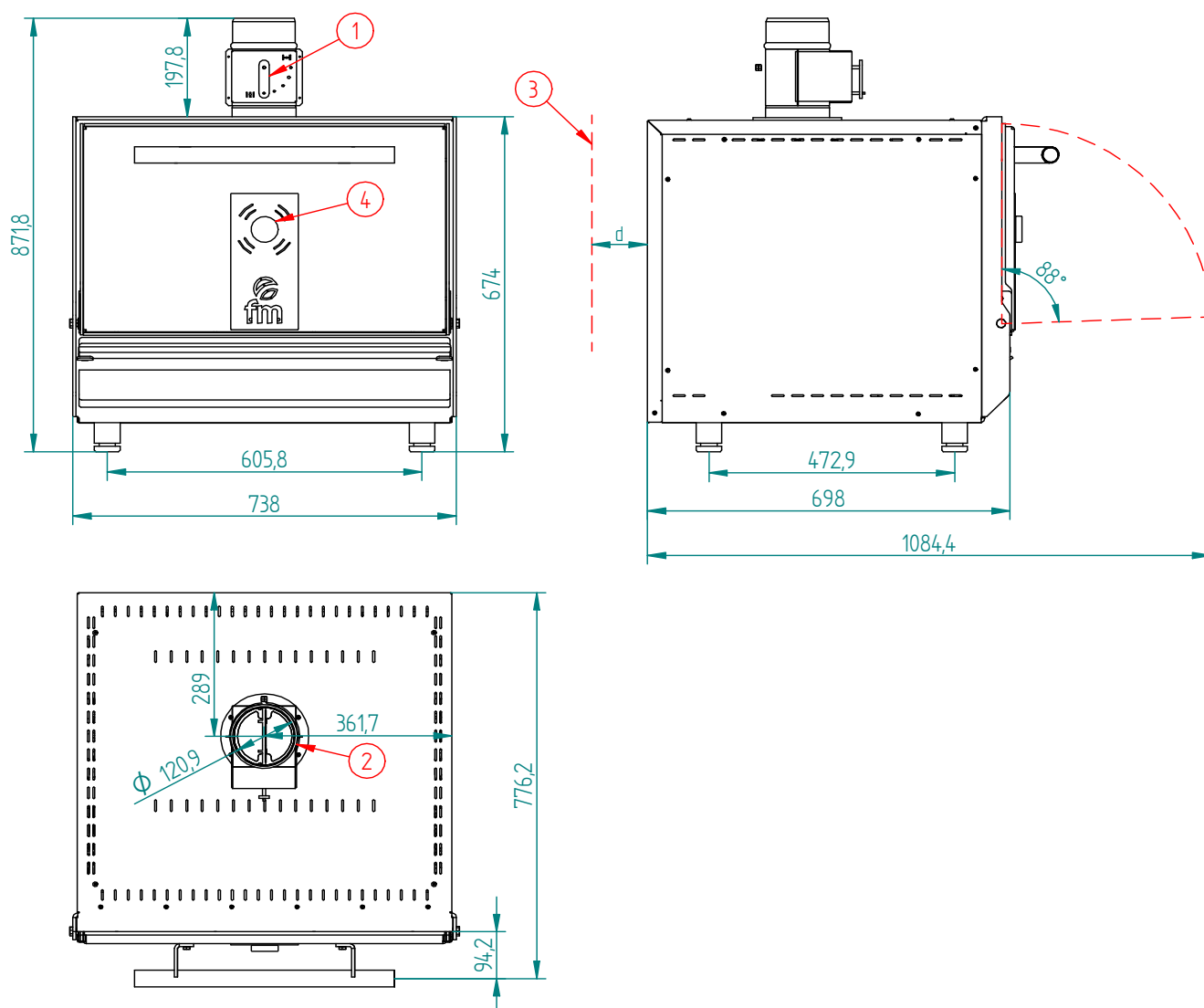


ST-G400 S



TECHNICAL CHARACTERISTICS		CONEXIONADO	
Net weight (oven)		1	Chimney control
Gross weight (oven+packaging)		2	Gas outlet (Ø120mm male)
Nominal thermal power	4,5kW	3	Minimum safety distance <div style="display: inline-block; vertical-align: middle; margin-left: 10px;"> $d=320\text{mm}$ with regard to flammable elements $d=120\text{mm}$ with regard to other </div>
Ignition time	45 minutos		
Diners	75-90		
Working temperature	250°C - 350°C	4	Temperature indicator

*Dimensions in mm



ST-G400 S (MEDIDAS CON ACCESORIOS)



COMPONENTS

1	Chimney control (included)
2	Fire control (optional)
3	Sopark arrester cup (optional)

