

# ST-G 300

Charcoal oven



Ref. 710719



Chimney control included



## FUNCTIONS

- Stainless steel construction
- Cast iron fire plan
- High quality internal insulation
- Working temperature between 250-350°C
- Temperature regulation (chimney system)
- Anti-impact door opening system
- Integrated temperature indicator
- Separate ash drawer
- Grease drawer
- Stainless steel grill included
- Stainless steel interior.

## TECHNICAL CHARACTERISTICS

Ignition time 45 minutes (aprox)

Electric power 3kW

Diners 40-50

Working temperature 250°C - 350°C

Weight 200kg

Gas outlet diameter 120mm

External dimensions (W)740x(D)575x(H)680mm  
(without accessories)

## CAPACITY

1 tray 570x350mm

1 tray GN1/1






# ST-G 300

Accessories



## Specific accessories

MODEL	DIMENSIONS	
<b>STAND</b> <b>ST-G 300</b> <i>Ref. 710733</i>	(W)720 x (D)500 x (H)800 mm	
<b>CABINET</b> <b>ST-G 300</b> <i>Ref. 710736</i>	(W)720 x (D)500 x (H)800 mm	
<b>ATEMPERATOR</b> <b>ST-G 300</b> <i>Ref. 710739</i>	(W)720 x (D)500 x (H)195 mm	

## General accessories



**CHIMNEY CONTROL**

*Ref. 710722*



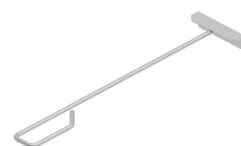
**FIRE CONTROL**

*Ref. 710723*



**SPARK ARRESTER CAP**

*Ref. 710724*



**POKER**

*Ref. 710725 (L 450 mm)*

*Ref. 710726 (L 750 mm)*



**CLAMP**

*Ref. 710728*



**BRUSH**

*Ref. 710729*



**ASH SHOVEL**

*Ref. 710727*



**GRILL**

*Ref. 710730 (570 x 350 mm)*

## DECLARACIÓN UE DE CONFORMIDAD EU DECLARATION OF CONFORMITY

Directiva(s) del Consejo con la(s) que se declara conformidad:  
*Council Directive(s) to which conformity is declared:*

Aplicación de las Normas:  
*Application of the Standards:*

**EN 13240:2002/A2:2005/AC:2006/AC:2007**

Fabricante / <i>Manufacturer's</i>	<b>FM CALEFACCIÓN S.L.</b>
Dirección / <i>Manufacturer's</i>	<b>CTRA. de Rute km.2.700, C.P.:14900, Lucena</b>
Tipo de aparato / <i>Type of</i>	<b>HORNO / OVEN</b>
Marca / <i>Trade.</i>	<b>FM CALEFACCIÓN</b>
Modelo / <i>Model no.:</i>	<b>ST-G300</b> <b>N/S: 22XXXXXXXXXX</b>

**Nosotros, los abajo firmantes, declaramos bajo nuestra exclusiva responsabilidad que el equipo especificado cumple con la(s) Directiva(s) y Norma(s) mencionadas**

***We, the undersigned, hereby declare under our sole responsibility that the specified equipment is in conformity with the above Directive(s) and Standard(s)***

***Este aparato esta destinado UNICAMENTE a uso profesional, y puede ser instalado en recintos abiertos o cerrados siempre que se lleven a cabo las indicaciones reflejadas en el manual de instrucciones del aparato.***

Lugar / *Place:* **Lucena**

Firma / *Signature:* **B-14343594**

Fecha / *Date:* **01/01/2022**

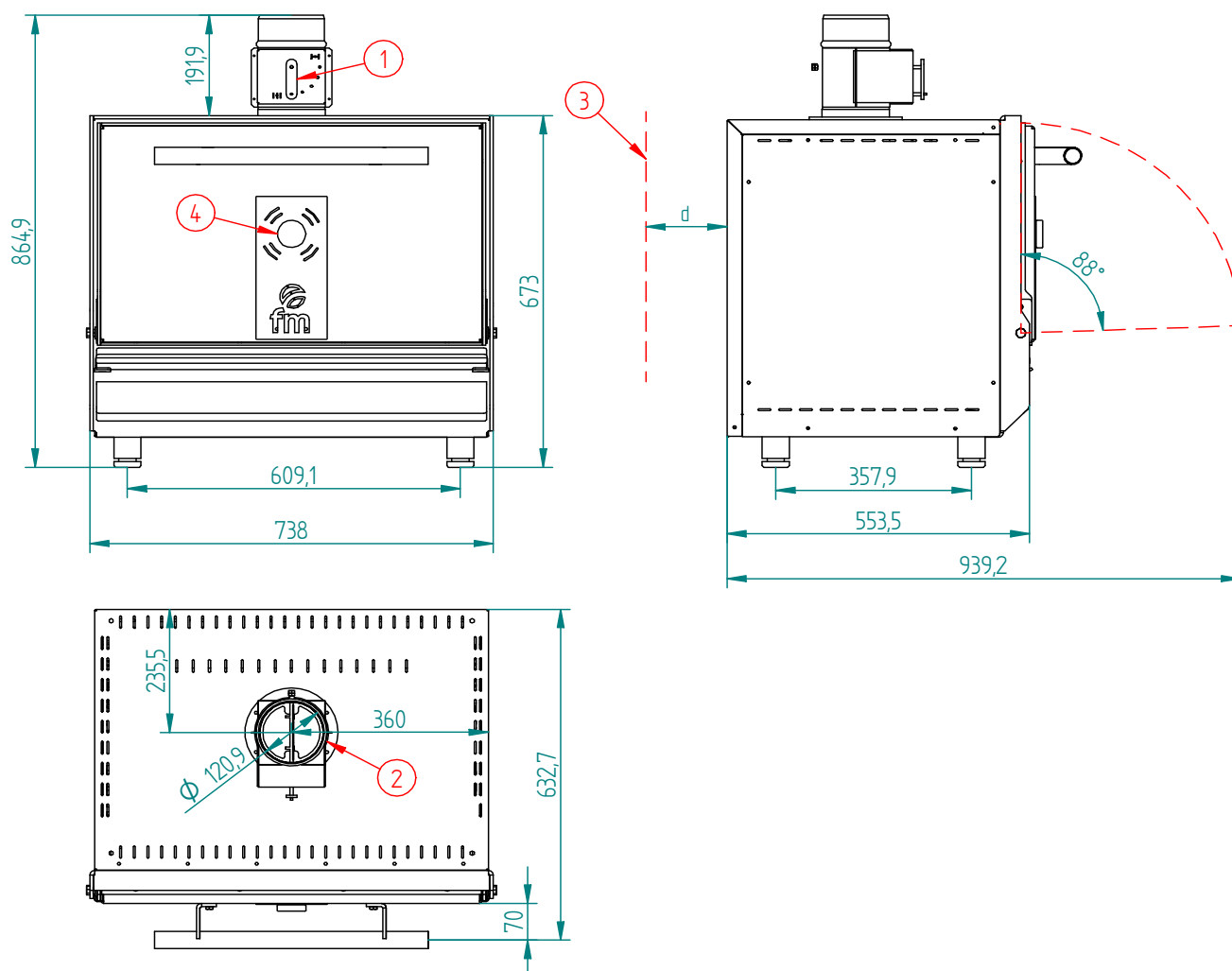


# ST-G300



TECHNICAL CHARACTERISTICS		CONNECTION	
Net weight (only oven)		1	Chimney control
Gross weight (oven+packaging)		2	Gas outlet (Ø120mm male)
Nominal thermal power	3kW	3	Minimum safety distance <div style="display: inline-block; vertical-align: middle; margin-left: 10px;"> <div style="color: red; font-weight: bold;">d=320mm</div> with regard to flammable elements  <div style="color: red; font-weight: bold;">d=120mm</div> with regard to other </div>
Ignition time	45 minutes		
Diners	40-50		
Working temperature	250°C - 350°C	4	Temperature indicator
Internal dimensions	(W)582x(D)285x(H)430mm		

\*Distance in mm



# ST-G300 (DIMENSIONS WITH ACCESORIES)



COMPONENTS	
1	Chimney control (included)
2	Fire control (optional)
3	Spark arrester cup (optional)

