

# RXL 604 PLUS

*Bakery oven*



Ref. 710540



## TECHNICAL CHARACTERISTICS

**Electric power** 6300 W

**Max temperature** 250 °C

**Weight** 60 kg

**Voltage** 400 V-50/60 Hz

**Connection** Three phase 3F+N+T

**Internal dimensions** (W)680x(D)470x(H)365 mm

**External dimensions** (W)820x(D)800x(H)560 mm

**Humidifier** (ref. 710541)

**Change to single phase**

**Change door opening**

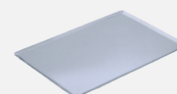
## FUNCTIONS - FEATURES

- End of cycle alarm
- Safety thermostat
- 0-60 Minute timer
- Non-stop mode
- Interior light
- Micro de puerta
- Rotation inverter
- Standard equipment 4 wire trays

## CAPACITY

**4 trays 480x340**

**4 trays GN 1/1**



# RXL 604 PLUS

*Specific accessories*



## RX 60/40 Stand

Ref. 710549



(W)810x(D)700x(H)850 mm

## RX GN1/1 Stand

Ref. 710550



(W)810x(D)700x(H)850 mm

## Wheels

Ref. 710286



Wheeled option

## Fumes condenser kit

### RX SERIES

Ref. 710551

(W)170x(D)70x(H)400 mm

### RX H2O SERIES

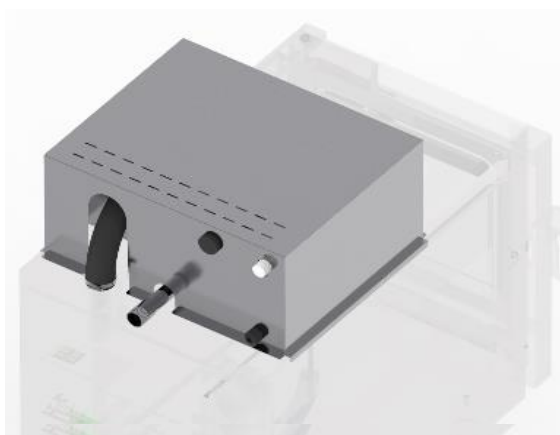
Ref. 710552

(W)720x(D)85x(H)450 mm

### RX DUO SERIES

Ref. 710553

(W)580x(D)120x(H)180 mm



## RX 60/40 Superposition kit

Ref. 710556



(W)820x(D)800x(H)40 mm

## DECLARACIÓN UE DE CONFORMIDAD EU DECLARATION OF CONFORMITY

Directiva(s) del Consejo con la(s) que se declara conformidad:

*Council Directive(s) to which conformity is declared:*

**DC 2014/35/EU + DC 2014/30/EU + DC 2011/65/EU**

Aplicación de las Normas:

*Application of the Standards:*

**UNE-EN 60335-1:2012 + AC:2014 + A11:2014 + A13:2017 + A14:2014 + A2:2020 + A1:2020; UNE-EN 60335-2-42:2004 + Corr:2007 + A1:2008 + A11:2012; UNE-EN 55014-1:2017 + A11:2021; UNE-EN 55014-2:2015; UNE-EN 61000-3-2:2014; UNE-EN 61000-3-3:2013 + A1:2020**

Fabricante / *Manufacturer's*  
*address:*

**FM CALEFACCIÓN S.L.**  
**CIF: B-14343594**

Dirección / *Manufacturer's*  
*address:*

**CTRA. de Rute km.2.700, C.P.:14900, Lucena**  
**Cordoba, Spain**

Tipo de aparato / *Type of*  
*device:*

**HORNO / OVEN**

Marca / *Trade.:*

**FM CALEFACCIÓN**

Modelo / *Model no.:*

**RXL 604 PLUS**

**N/S: 21XXXXXXXXXX**

**Nosotros, los abajo firmantes, declaramos bajo nuestra exclusiva responsabilidad que el equipo especificado cumple con la(s) Directiva(s) y Norma(s) mencionadas**

***We, the undersigned, hereby declare under our sole responsibility that the specified equipment is in conformity with the above Directive(s) and Standard(s)***

Lugar / *Place:* **Lucena**

Firma / *Signature:* **B-14343594**

Fecha / *Date:* **01/01/2021**



# RXL 604 PLUS



## TECHNICAL CHARACTERISTICS

## CONNECTIONS

