

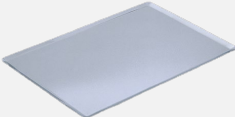
RX 424 PLUS

Bakery oven



Ref. 710923



TECHNICAL CHARACTERISTICS		EQUIPMENT-FEATURES	
<p>Electric power3.800W</p> <p>Maximum temperature250°C</p> <p>Weight60kg</p> <p>Voltage230V-50/60Hz</p> <p>Connection Single phase Schuko</p> <p>Internal dimensions (W)560x(D)415x(H)345mm</p> <p>External dimensions (W)700x(D)710x(H)540mm</p> <p>Humidifier (ref. 710925)</p>		<ul style="list-style-type: none">• End of cycle alarm• Safety thermostat• Timer0-60 minutes• Non-stop mode• Chamber light• Standard equipment 4 wire racks	
CAPACITY			
<p>4 trays 480x340</p> <p>4 trays GN1/1</p> 			

RX 424 PLUS

Specific accessories



Stand RX 48/34

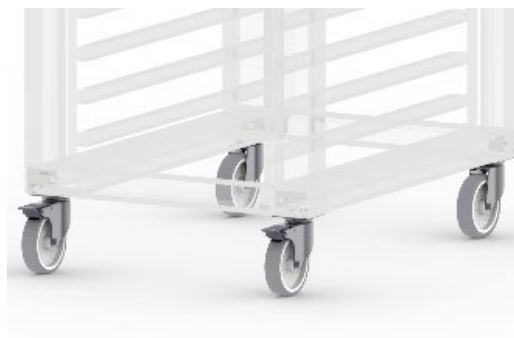
Ref. 710548 |



(W)590x(D)580x(H)850mm

Wheels

Ref. 710286 |



Fumes condenser kit

SERIE RX

Ref. 710551 |

(W)170x(D)70x(H)400mm

SERIE RX H20

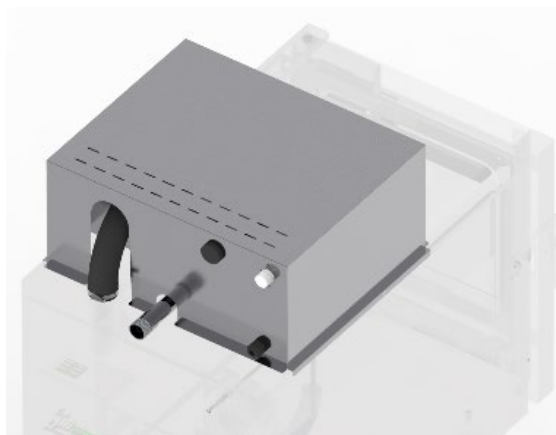
Ref. 710552 |

(W)720x(D)85x(H)450mm

SERIE RX DUO

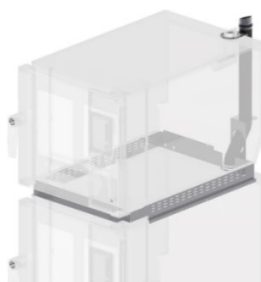
Ref. 710553 |

(W)580x(D)120x(H)180mm



Superposition Kit RX 48/34

Ref. 710555 |



(W)640x(D)720x(H)40mm

RX 424 PLUS



DECLARACIÓN UE DE CONFORMIDAD EU DECLARATION OF CONFORMITY

Directiva(s) del Consejo con la(s) que se declara conformidad:
Council Directive(s) to which conformity is declared:

DC 2014/35/EU + DC 2014/30/EU + DC 2011/65/EU

Aplicación de las Normas:
Application of the Standards:

UNE-EN 60335-1:2012 + AC:2014 + A11:2014 + A13:2017 + A14:2014 + A2:2020 + A1:2020; UNE-EN 60335-2-42:2004 + Corr:2007 + A1:2008 + A11:2012; UNE-EN 55014-1:2017 + A11:2021; UNE-EN 55014-2:2015; UNE-EN 61000-3-2:2014; UNE-EN 61000-3-3:2013 + A1:2020

Fabricante / *Manufacturer's name:*

**FM CALEFACCIÓN S.L.
CIF: B-14343594**

Dirección / *Manufacturer's address:*

**CTRA. de Rute km.2.700, C.P.:14900, Lucena
Cordoba, España**

Tipo de aparato / *Type of device:*

HORNO / OVEN

Marca / *Trade.:*

FM CALEFACCIÓN

Modelo / *Model no.:*

RX 424 PLUS

N/S: 23XXXXXXXXXX

Nosotros, los abajo firmantes, declaramos bajo nuestra exclusiva responsabilidad que el equipo especificado cumple con la(s) Directiva(s) y Norma(s) mencionadas

We, the undersigned, hereby declare under our sole responsibility that the specified equipment is in conformity with the above Directive(s) and Standard(s)

Lugar / *Place:* **Lucena**

Firma / *Signature:* **B-14343594**

Fecha / *Date:* **01/01/2023**



RX 424 PLUS



TECHNICAL CHARACTERISTICS		CONEXIONADO	
Net Weight (oven)		1	Electrical connection
Gross Weight (oven+packaging)		2	Fumes outlet ø30mm
Supply voltage	230Vac - Single phase	3	Safety thermostat reset
Frequency	50Hz	4	Safety distance ≥ 120mm
Power cable	Hose 1F+N+T 2,5mm ² (shucko)		
Noise level	Below to 70dB		
Electric power	3.100W		
Thermal power	3.000W		

*Dimensions in mm

