

# RX 424

*Bakery oven*



Ref. 710524



## TECHNICAL CHARACTERISTICS

**Electric power** 3100 W

**Max temperature** 250 °C

**Weight** 40 kg

**Voltage** 230 V-50/60 Hz

**Connection** Single phase Shucko

**Internal dimensions** (W)500x(D)415x(H)345 mm

**External dimensions** (W)640x(D)740x(H)540 mm

**Humidifier** (ref. 710525)

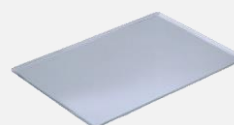
## FUNCTIONS - FEATURES

- End of cycle alarm
- Safety thermostat
- 0-60 Minute timer
- Non-stop mode
- Interior light
- Standard equipment 4 wire trays

## CAPACITY

**4 trays 480x340**

**4 trays GN 2/3**



# RX 424

*Specific accessories*



## RX 43/44 Stand

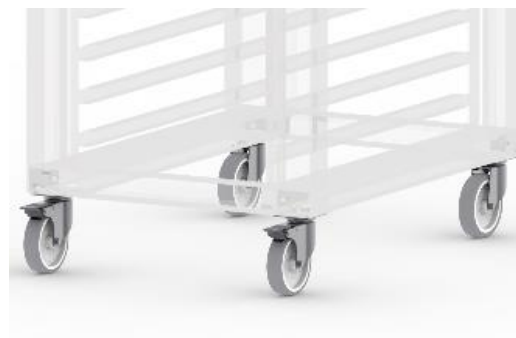
Ref. 710547



(W)590x(D)580x(H)850 mm

## Wheels

Ref. 710286



Wheeled option

## Fumes condenser kit

### RX SERIES

Ref. 710551

(W)170x(D)70x(H)400 mm

### RX H2O SERIES

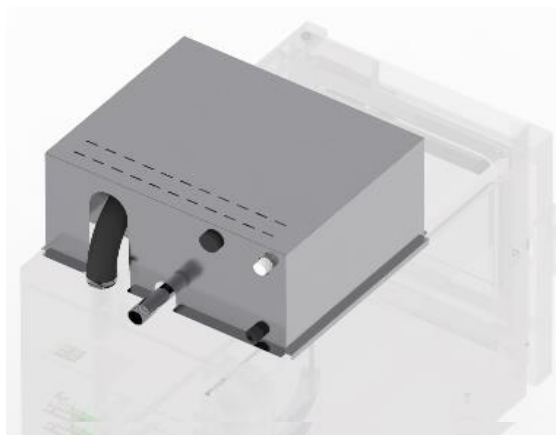
Ref. 710552

(W)720x(D)85x(H)450 mm

### RX DUO SERIES

Ref. 710553

(W)580x(D)120x(H)180 mm



## RX 43/34 Superposition kit

Ref. 710554



(W)640x(D)720x(H)40 mm

## DECLARACIÓN UE DE CONFORMIDAD EU DECLARATION OF CONFORMITY

Directiva(s) del Consejo con la(s) que se declara conformidad:  
*Council Directive(s) to which conformity is declared:*

**DC 2014/35/EU + DC 2014/30/EU + DC 2011/65/EU**

Aplicación de las Normas:  
*Application of the Standards:*

**UNE-EN 60335-1:2012 + AC:2014 + A11:2014 + A13:2017 + A14:2014 + A2:2020 + A1:2020; UNE-EN 60335-2-42:2004 + Corr:2007 + A1:2008 + A11:2012; UNE-EN 55014-1:2017 + A11:2021; UNE-EN 55014-2:2015; UNE-EN 61000-3-2:2014; UNE-EN 61000-3-3:2013 + A1:2020**

Fabricante / *Manufacturer's name:* **FM CALEFACCIÓN S.L.**  
**CIF: B-14343594**

Dirección / *Manufacturer's address:* **CTRA. de Rute km.2.700, C.P.:14900, Lucena  
Cordoba, Spain**

Tipo de aparato / *Type of device:* **HORNO / OVEN**

Marca / *Trade.:* **FM CALEFACCIÓN**

Modelo / *Model no.:* **RX 424** **N/S: 21XXXXXXXXXX**

**Nosotros, los abajo firmantes, declaramos bajo nuestra exclusiva responsabilidad que el equipo especificado cumple con la(s) Directiva(s) y Norma(s) mencionadas**

***We, the undersigned, hereby declare under our sole responsibility that the specified equipment is in conformity with the above Directive(s) and Standard(s)***

Lugar / *Place:* **Lucena**

Firma / *Signature:* **B-14343594**

Fecha / *Date:* **01/01/2021**



# RX 424



TECHNICAL CHARACTERISTICS		CONNECTIONS	
Net Weight (oven)		1	Electrical connection
Gross Weight (oven+packaging)		2	Hot gases outlet Ø30 mm
Supply voltage	230 Vac - Single phase	3	Safety thermostat reset
Frequency	50 Hz	4	Safety distance $\geq 120$ mm
Power cable	Hose 1F+N+T 2,5 mm <sup>2</sup> (shucko)		
Noise level	below 70 dB		
Electric power	3100 W		
Thermal power	3000 W		

\*Dimensions in mm

