

RX 203

Bakery oven



Ref. 710520



TECHNICAL CHARACTERISTICS

Electric power 2250 W

Max temperature 250 °C

Weight 22 kg

Voltage 230 V-50/60 Hz

Connection Single phase Schuko

Internal dimensions (W)360x(D)290x(H)260 mm

External dimensions (W)500x(D)545x(H)455 mm

Humidifier (ref. 710521)

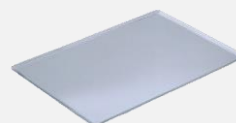
FUNCTIONS - FEATURES

- Safety thermostat
- 0-60 Minute timer
- Non-stop mode
- Standard equipment 3 perforated aluminium trays

CAPACITY

3 trays 340x240

3 trays GN 1/2



RX 203

Specific accessories



Fumes condenser kit

RX SERIES

Ref. 710551

(W)170x(D)70x(H)400 mm

RX H2O SERIES

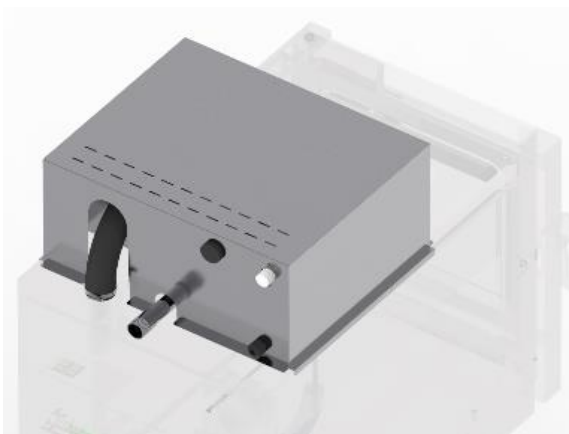
Ref. 710552

(W)720x(D)85x(H)450 mm

RX DUO SERIES

Ref. 710553

(W)580x(D)120x(H)180 mm



DECLARACIÓN UE DE CONFORMIDAD EU DECLARATION OF CONFORMITY

Directiva(s) del Consejo con la(s) que se declara conformidad:

Council Directive(s) to which conformity is declared:

DC 2014/35/EU + DC 2014/30/EU + DC 2011/65/EU

Aplicación de las Normas:

Application of the Standards:

UNE-EN 60335-1:2012 + AC:2014 + A11:2014 + A13:2017 + A14:2014 + A2:2020 + A1:2020; UNE-EN 60335-2-42:2004 + Corr:2007 + A1:2008 + A11:2012; UNE-EN 55014-1:2017 + A11:2021; UNE-EN 55014-2:2015; UNE-EN 61000-3-2:2014; UNE-EN 61000-3-3:2013 + A1:2020

Fabricante / *Manufacturer's name:* **FM CALEFACCIÓN S.L.**

CIF: B-14343594

Dirección / *Manufacturer's address:*

**CTRA. de Rute km.2.700, C.P.:14900, Lucena
Cordoba, Spain**

Tipo de aparato / *Type of device:*

HORNO / OVEN

Marca / *Trade.:*

FM CALEFACCIÓN

Modelo / *Model no.:*

RX 203

N/S: 21XXXXXXXXXX

Nosotros, los abajo firmantes, declaramos bajo nuestra exclusiva responsabilidad que el equipo especificado cumple con la(s) Directiva(s) y Norma(s) mencionadas

We, the undersigned, hereby declare under our sole responsibility that the specified equipment is in conformity with the above Directive(s) and Standard(s)

Lugar / *Place:* **Lucena**

Firma / *Signature:* **B-14343594**

Fecha / *Date:* **01/01/2021**



RX 203



TECHNICAL CHARACTERISTICS		CONNECTIONS	
Net Weight (oven)		1	Electrical connection
Gross Weight (oven+packaging)		2	Hot gases outlet Ø30 mm
Supply voltage	230 Vac - Single phase	3	Safety thermostat reset
Frequency	50 Hz	4	Safety distance ≥ 120 mm
Power cable	Hose 1F+N+T 2,5 mm ² (shucko)		
Noise level	below 70 dB		
Electric power	2250 W		
Thermal power	2200 W		

*Dimensions in mm

