

STB 5/86 V7

Bakery oven



Ref. 710502



- Change door opening:
optional

FEATURES

- Digital display in control panel system
- End of cycle alarm
- Door switch
- Interior LED light
- 3/4" water connection
- Easy to clean folding glass
- Rotation inverter
- USB port
- Multilevel

FUNCTIONS

- Clima control-humidity regulation
- % step speed control
- Steam control-programmable chimney
- 99 cooking programs
- 3 cooking modes: dry heat, vapour and mixed
- Regeneration/maintain food temperature
- User configurable cooking book with pictures
- Multicook/All on time

TECHNICAL CHARACTERISTICS

Electric power 18.650 W

Maximum temperature Up to 300 °C

Weight 157 kg

Voltage 400 V-50/60 Hz

Connection Three phase 3F+N+T

Internal dimensions (W)710x(D)900x(H)555 mm

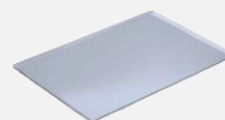
External dimensions (W)880x(D)1375x(H)835 mm

Automatic washing optional

Removable core probe optional

CAPACITY

5 trays 800x600 - 10 trays 600x400



Transverse tray position



Distance between trays

100mm

STB 6/86 V7

Specific accessories



Stands

STB 300 (800x600)

Ref. 710511



(W)810x(D)1160x(H)650 mm

Nº guides - 0

STB 600 (800x600)

Ref. 710512



(W)810x(D)1160x(H)650 mm

Nº guides- 6

STB 850 (800x600)

Ref. 710513



(W)810x(D)1160x(H)850 mm

Nº guides - 8

STB 80x60 Hood

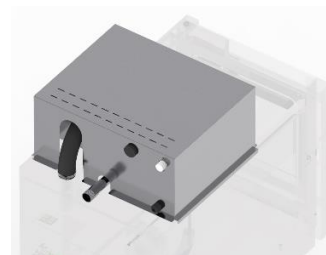
Ref. 710516



(W)880x(D)1505x(H)315 mm

STB V7 Fumes condenser kit

Ref. 710518



(W)510x(D)210x(H)315 mm

First installation kit

Ref. 710832



The kit contains

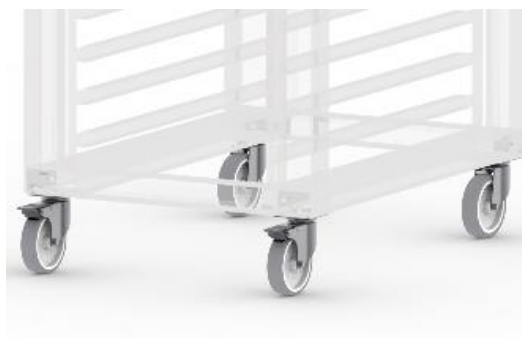
Pipes, connections, adapters and required accessories for the oven installation

1 kg of detergent

1 kg of rinse

Wheels

Ref. 710286



Wheeled option

DECLARACIÓN UE DE CONFORMIDAD EU DECLARATION OF CONFORMITY

Directiva(s) del Consejo con la(s) que se declara conformidad:

Council Directive(s) to which conformity is declared:

DC 2014/35/EU + DC 2014/30/EU + DC 2011/65/EU

Aplicación de las Normas:

Application of the Standards:

UNE-EN 60335-1:2012 + AC:2014 + A11:2014 + A13:2017 + A14:2014 + A2:2020 + A1:2020; UNE-EN 60335-2-42:2004 + Corr:2007 + A1:2008 + A11:2012; UNE-EN 55014-1:2017 + A11:2021; UNE-EN 55014-2:2015; UNE-EN 61000-3-2:2014; UNE-EN 61000-3-3:2013 + A1:2020

Fabricante / *Manufacturer's name:*

**FM CALEFACCIÓN S.L.
CIF: B-14343594**

Dirección / *Manufacturer's address:*

**CTRA. de Rute km.2.700, C.P.:14900, Lucena
Cordoba, Spain**

Tipo de aparato / *Type of device:*

HORNO / OVEN

Marca / *Trade.:*

FM CALEFACCIÓN

Modelo / *Model no.:*

STB 686 V7

N/S: 21XXXXXXXXXX

Nosotros, los abajo firmantes, declaramos bajo nuestra exclusiva responsabilidad que el equipo especificado cumple con la(s) Directiva(s) y Norma(s) mencionadas

We, the undersigned, hereby declare under our sole responsibility that the specified equipment is in conformity with the above Directive(s) and Standard(s)

Lugar / *Place:* **Lucena**

Firma / *Signature:* **B-14343594**

Fecha / *Date:* **01/01/2021**



STB 686 V7



TECHNICAL CHARACTERISTICS		CONNECTIONS	
Empty unit weight		1	Hose connection
Unit+packaging weight		2	Hood connection
Supply voltage	400 Vac - three phase	3	Fumes condenser connection
Frequency	50/60 Hz	4	Water connection 3/4"
Power cable	Hose 3F+N+T 4 mm ²	5	Drain Ø40 mm
Sound pressure level	Below 70 dB	6	Safety gap ≥ 120 mm
Total power	14650 W	7	Fumes exit Ø80 mm
Thermal power	14000 W	8	Safety thermostat reset
*Dimensions in mm		9	Core probe connection
		10	On/Off button
		11	USB/HACCP connection
		12	Nameplate

