

STB 616 ET

Bakery oven



Ref. 710499



FEATURES

- Digital display and encoder
- Rotation inverter
- End of cycle alarm
- Door switch
- Safety thermostat
- Interior LED light
- 3/4" water connection
- Two speed engine
- Direct vaporization push button
- Easy to clean folding glass

FUNCTIONS

- 0 to 100 % humidity regulation
- 0-120 minute timer
- Non-stop mode
- Available with gastronorm GN trays
- Chimney manual control

TECHNICAL CHARACTERISTICS

Electric power 26.250 W

Maximum temperature 250 °C

Weight 252 kg

Voltage 400 V-50/60 Hz

Connection Three phase 3F+N+T

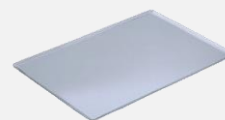
Internal dimensions (W)700x(D)500x(H)1480 mm

External dimensions (W)880x(D)915x(H)1865 mm

Trolley standard

CAPACITY

16 trays 600x400



Transverse tray position



Distance between trays

80 mm

STB 616 ET

Specific accessories



STB V7 Hood

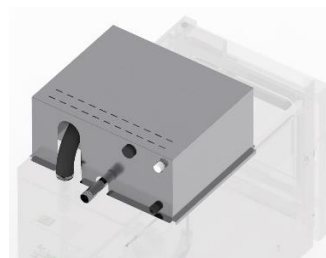
Ref. 710515



(W)880x(D)1105x(H)315 mm

STB V7 Fumes condenser kit

Ref. (ASK DEALER)



DIMENSIONS: ASK DEALER

First installation kit

Ref. 710832



The kit contains:

Pipes, connections, adapters and required accessories for the oven installation

1 kg of detergent

1 kg of rinse

DECLARACIÓN UE DE CONFORMIDAD EU DECLARATION OF CONFORMITY

Directiva(s) del Consejo con la(s) que se declara conformidad:

Council Directive(s) to which conformity is declared:

DC 2014/35/EU + DC 2014/30/EU + DC 2011/65/EU

Aplicación de las Normas:

Application of the Standards:

UNE-EN 60335-1:2012 + AC:2014 + A11:2014 + A13:2017 + A14:2014 + A2:2020 + A1:2020; UNE-EN 60335-2-42:2004 + Corr:2007 + A1:2008 + A11:2012; UNE-EN 55014-1:2017 + A11:2021; UNE-EN 55014-2:2015; UNE-EN 61000-3-2:2014; UNE-EN 61000-3-3:2013 + A1:2020

Fabricante / *Manufacturer's name:*

**FM CALEFACCIÓN S.L.
CIF: B-14343594**

Dirección / *Manufacturer's address:*

**CTRA. de Rute km.2.700, C.P.:14900, Lucena
Cordoba, Spain**

Tipo de aparato / *Type of device:*

HORNO / OVEN

Marca / *Trade.:*

FM CALEFACCIÓN

Modelo / *Model no.:*

STB 616 ET

N/S: 21XXXXXXXXXX

Nosotros, los abajo firmantes, declaramos bajo nuestra exclusiva responsabilidad que el equipo especificado cumple con la(s) Directiva(s) y Norma(s) mencionadas

We, the undersigned, hereby declare under our sole responsibility that the specified equipment is in conformity with the above Directive(s) and Standard(s)

Lugar / *Place:* **Lucena**

Firma / *Signature:* **B-14343594**

Fecha / *Date:* **01/01/2021**



STB 616 ET



TECHNICAL CHARACTERISTICS		CONNECTIONS	
Empty unit weight		1	Hose connection
Unit+packaging weight		2	Hood connection
Supply voltage	400 Vac - three phase	3	Fumes condenser connection
Frequency	50/60 Hz	4	Water connection 3/4"
Power cable	Hose 3F+N+T 6 mm ²	5	Drain Ø40 mm
Sound pressure level	Below 70 dB	6	On/Off Button
Total power	26250 W	7	Safety gap ≥ 120 mm
Thermal power	25000 W	8	Fumes exit Ø50 mm
		9	Safety thermostat reset
		10	Nameplate

*Dimensions in mm

