

STB 610 V7 GAS

Bakery oven




Ref. 710498



- Change door opening: **optional**

FEATURES

- Digital display in control panel system
- End of cycle alarm
- Door switch
- Interior LED light
- 3/4" water connection
- Easy to clean folding glass
- Rotation inverter
- USB port
- Multilevel
- Premix burner system 

FUNCTIONS

- Clima control-humidity regulation
- % step speed control
- Steam control-programmable chimney
- 99 cooking programs
- 3 cooking modes: dry heat, vapour and mixed
- Regeneration/maintain food temperature
- User configurable cooking book with pictures
- Multicook/All on time

TECHNICAL CHARACTERISTICS

Electric power 650 W

Gas power 20 kW-17.200 kcal/h

Maximum temperature Up to 300°C

Weight 168 kg

Voltage 230 V-50/60 Hz

Connection Single phase

Internal dimensions (W)710x(D)500x(H)875 mm

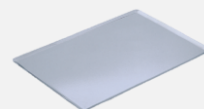
External dimensions (W)880x(D)985x(H)1175 mm

Automatic washing optional

Removable core probe optional

CAPACITY

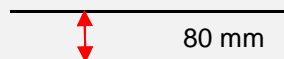
10 trays GN1/1 - 600x400



Transverse tray position



Distance between trays



STB 610 V7 GAS

Specific accessories



Soportes

STB 300

Ref. 710508



(W)810x(D)760x(H)300 mm

Nº guides - 0

STB 650

Ref. 710509



(W)810x(D)760x(H)650 mm

Nº guides - 6

STB 850

Ref. 710510



(W)810x(D)760x(H)850 mm

Nº guides - 8

First installation kit

Ref. 710832



The kit contains:

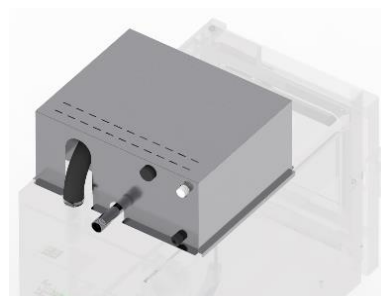
Pipes, connections, adapters and required accessories for the oven installation

1 kg of detergent

1 kg of rinse

Fumes condenser kit

Ref. 710518



(W)510x(D)210x(H)315 mm

Superposition kit

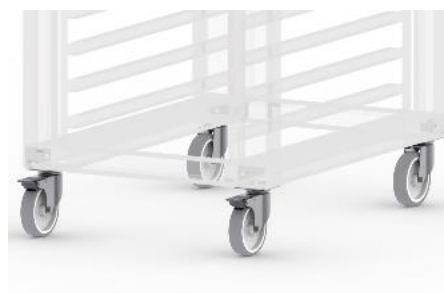
Ref. 7105119



(W)880x(D)935x(H)80 mm

Wheels

Ref. 710286



Wheeled option

STB 610 V7 GAS



DECLARACIÓN UE DE CONFORMIDAD EU DECLARATION OF CONFORMITY

Directiva(s) del Consejo con la(s) que se declara conformidad:
Council Directive(s) to which conformity is declared:

DC 2014/35/EU + DC 2014/30/EU + DC 2011/65/EU + Regulation (EU) 2016/426

Aplicación de las Normas:
Application of the Standards:

UNE-EN 60335-1:2012+AC:2014+A11:2014+A13:2017+A14:2014+A2:2020+A1:2020; UNE-EN 60335-2-42:2004+Corr:2007+A1:2008+A11:2012; UNE-EN 55014-1:2017+A11:2021; UNE-EN 55014-2:2015; UNE-EN 61000-3-2:2014; UNE-EN 61000-3-3:2013+A1:2020; UNE-EN 203-1: 2014; UNE-EN 203-2-2:2007; UNE-EN 60335-2-102:2016

Fabricante / *Manufacturer's name:*

**FM CALEFACCIÓN S.L.
CIF: B-14343594**

Dirección / *Manufacturer's address:*

**CTRA. de Rute km.2.700, C.P.:14900, Lucena
Cordoba, Spain**

Tipo de aparato / *Type of device:*

HORNO / OVEN

Marca / *Trade.:*

FM CALEFACCIÓN

Modelo / *Model no.:*

STB 610 V7 GAS N/S: 21XXXXXXXXXX PIN:370DM5880

Nosotros, los abajo firmantes, declaramos bajo nuestra exclusiva responsabilidad que el equipo especificado cumple con la(s) Directiva(s) y Norma(s) mencionadas

We, the undersigned, hereby declare under our sole responsibility that the specified equipment is in conformity with the above Directive(s) and Standard(s)

Lugar / *Place:* **Lucena**

Firma / *Signature:* **B-14343594**

Fecha / *Date:* **01/01/2021**



STB 610 V7 GAS



TECHNICAL CHARACTERISTICS				CONNECTIONS	
Empty unit weight				1	Hose connection
Unit+packaging weight				2	Water connection
Supply voltage	230 Vac - single phase			3	Drain Ø40 mm
Frequency	50/60 Hz			4	Gas Connection (3/4")
Power cable	Hose 1F+N+T 2,5 mm ² (schuko)			5	Fumes exit Ø50 mm
Sound pressure level	Below 70dB			6	Safety gap =<120 mm
Electric power	650 W			7	Exhaust pipe Ø50mm
	G20	G25	G31	8	On/Off button
Estimated consumption (m3/h)	2,12	2,46	1,55	9	Core Probe Connection
Input pressure (mbar)	20	25	37	10	USB/HACCP Connection
Nominal thermal power (kW)	20	19,2	20	11	Fumes condenser connection
				12	Safety thermostat reset
				13	Nameplate

*Dimensions in mm

*Flue gas outlet adaptor ø100mm included

