

STB 610 M

Bakery oven



Ref. 710495

FEATURES

- Manual control panel system
- End of cycle alarm
- Door switch
- Safety thermostat
- Interior LED light
- 3/4" water connection
- Easy to clean folding glass
- Available with GN and 600x400 mm trays

FUNCTIONS

- User friendly
- 0 to 100% humidity regulation
- 0-120 minute timer
- Non-stop mode
- Chimney manual control



TECHNICAL CHARACTERISTICS

Electric power 15600 W

Maximum temperature 250 °C

Weight 139 kg

Voltage 400 V- 50/60 Hz

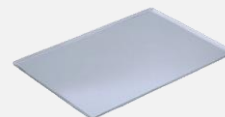
Connection Three phase 3F+N+T

Internal dimensions (W)710x(D)500x(H)875 mm

External dimensions (W)880x(D)905x(H)1155 mm

CAPACITY

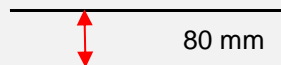
10 trays GN1/1 - 600x400



Transverse tray position



Distance between trays



STB 610 M

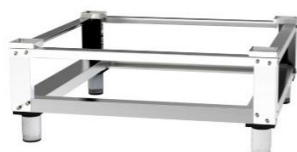
Specific accessories



Stands

STB 300

Ref. 710508



(W)810x(D)760x(H)300 mm

Nº guides - 0

STB 650

Ref. 710509



(W)810x(D)760x(H)650 mm

Nº guides- 6

STB 850

Ref. 710510



(W)810x(D)760x(H)850 mm

Nº guides - 8

STB M Hood

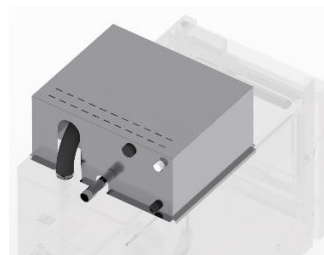
Ref. 710514



(W)880x(D)1105x(H)315 mm

STB Fumes condenser kit

Ref. 710517



(W)510x(D)210x(H)315 mm

Superposition kit

Ref. 710519



(W)880x(D)935x(H)80 mm

First installation kit

Ref. 710832



The kit contains

Pipes, connections, adapters and required accesories for the oven installation

1 kg of detergent

1 kg of rinse

Wheels

Ref. 710286



Wheeled option

DECLARACIÓN UE DE CONFORMIDAD EU DECLARATION OF CONFORMITY

Directiva(s) del Consejo con la(s) que se declara conformidad:

Council Directive(s) to which conformity is declared:

DC 2014/35/EU + DC 2014/30/EU + DC 2011/65/EU

Aplicación de las Normas:

Application of the Standards:

UNE-EN 60335-1:2012 + AC:2014 + A11:2014 + A13:2017 + A14:2014 + A2:2020 + A1:2020; UNE-EN 60335-2-42:2004 + Corr:2007 + A1:2008 + A11:2012; UNE-EN 55014-1:2017 + A11:2021; UNE-EN 55014-2:2015; UNE-EN 61000-3-2:2014; UNE-EN 61000-3-3:2013 + A1:2020

Fabricante / *Manufacturer's name:*

**FM CALEFACCIÓN S.L.
CIF: B-14343594**

Dirección / *Manufacturer's address:*

**CTRA. de Rute km.2.700, C.P.:14900, Lucena
Cordoba, Spain**

Tipo de aparato / *Type of device:*

HORNO / OVEN

Marca / *Trade.:*

FM CALEFACCIÓN

Modelo / *Model no.:*

STB 610 M

N/S: 21XXXXXXXXXX

Nosotros, los abajo firmantes, declaramos bajo nuestra exclusiva responsabilidad que el equipo especificado cumple con la(s) Directiva(s) y Norma(s) mencionadas

We, the undersigned, hereby declare under our sole responsibility that the specified equipment is in conformity with the above Directive(s) and Standard(s)

Lugar / *Place:* **Lucena**

Firma / *Signature:* **B-14343594**

Fecha / *Date:* **01/01/2021**



STB 610 M



TECHNICAL CHARACTERISTICS		CONNECTIONS	
Empty unit weight		1	Hose connection
Unit+packaging weight		2	Hood connection
Supply voltage	400 Vac - three phase	3	Fumes condenser connection
Frequency	50/60 Hz	4	Safety thermostat reset
Power cable	Hose 3F+N+T 4 mm ²	5	Drain Ø40 mm
Sound pressure level	Below 70 dB	6	Safety gap ≥120 mm
Total power	15600 W	7	Fumes exit Ø50 mm
Thermal power	15000 W	8	Water connection 3/4"
		9	Nameplate

*Dimensions in mm

