

STB 604 M

Bakery oven



Ref. 710489

FEATURES



- Manual control panel system
- End of cycle alarm
- Door switch
- Safety thermostat
- Interior LED light
- 3/4" water connection
- Easy to clean folding glass
- Available with GN and 600x400 mm trays

FUNCTIONS

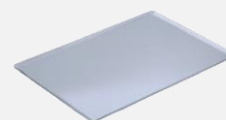
- User friendly
- 0 to 100 % humidity regulation
- 0-120 minute timer
- Non-stop mode
- Chimney manual control

TECHNICAL CHARACTERISTICS

Electric power 7500 W
Maximum temperature 250 °C
Weight 90 kg
Voltage 400 V-50/60 Hz
Connection Three phase 3F+N+T
Internal dimensions (W)710x(D)500x(H)390 mm
External dimensions (W)880x(D)905x(H)670 mm

CAPACITY

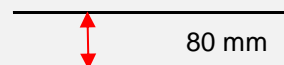
4 trays GN1/1 - 600x400



Transverse tray position



Distance between trays



STB 604 M

Specific accessories



Stands

STB 300

Ref. 710508



(W)810x(D)760x(H)300 mm

Nº guides - 0

STB 650

Ref. 710509



(W)810x(D)760x(H)650 mm

Nº guides- 6

STB 850

Ref. 710510



(W)810x(D)760x(H)850 mm

Nº guides - 8

STB M Hood

Ref. 710514 | UNO

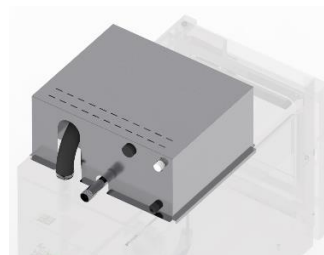
Ref. 710756 | DUO



(W)880x(D)1060x(H)315 mm

STB Fumes condenser kit

Ref. 710517



(W)510x(D)210x(H)315 mm

Superposition kit

Ref. 710519



(W)880x(D)935x(H)80 mm

First installation kit

Ref. 710832 | UNO



The kit contains

Pipes, connections, adapters and required accesories for the oven installation

1 kg of detergent

1 kg of rinse

Wheels

Ref. 710286



Wheeled option

DECLARACIÓN UE DE CONFORMIDAD EU DECLARATION OF CONFORMITY

Directiva(s) del Consejo con la(s) que se declara conformidad:

Council Directive(s) to which conformity is declared:

DC 2014/35/EU + DC 2014/30/EU + DC 2011/65/EU

Aplicación de las Normas:

Application of the Standards:

UNE-EN 60335-1:2012 + AC:2014 + A11:2014 + A13:2017 + A14:2014 + A2:2020 + A1:2020; UNE-EN 60335-2-42:2004 + Corr:2007 + A1:2008 + A11:2012; UNE-EN 55014-1:2017 + A11:2021; UNE-EN 55014-2:2015; UNE-EN 61000-3-2:2014; UNE-EN 61000-3-3:2013 + A1:2020

Fabricante / *Manufacturer's name:*

**FM CALEFACCIÓN S.L.
CIF: B-14343594**

Dirección / *Manufacturer's address:*

**CTRA. de Rute km.2.700, C.P.:14900, Lucena
Cordoba, Spain**

Tipo de aparato / *Type of device:*

HORNO / OVEN

Marca / *Trade.:*

FM CALEFACCIÓN

Modelo / *Model no.:*

STB 604 M

N/S: 21XXXXXXXXXX

Nosotros, los abajo firmantes, declaramos bajo nuestra exclusiva responsabilidad que el equipo especificado cumple con la(s) Directiva(s) y Norma(s) mencionadas

We, the undersigned, hereby declare under our sole responsibility that the specified equipment is in conformity with the above Directive(s) and Standard(s)

Lugar / *Place:* **Lucena**

Firma / *Signature:* **B-14343594**

Fecha / *Date:* **01/01/2021**



STB 604 M



| TECHNICAL CHARACTERISTICS | | CONNECTIONS | |
|---------------------------|-------------------------------|-------------|----------------------------|
| Empty unit weight | | 1 | Hose connection |
| Unit+packaging weight | | 2 | Hood connection |
| Supply voltage | 400 Vac - three phase | 3 | Fumes condenser connection |
| Frequency | 50/60 Hz | 4 | Safety thermostat reset |
| Power cable | Hose 3F+N+T 4 mm ² | 5 | Drain Ø40 mm |
| Sound pressure level | Below 70 dB | 6 | Safety gap ≥ 120 mm |
| Total power | 7500 W | 7 | Fumes exit Ø50 mm |
| Thermal power | 7000 W | 8 | Water connection 3/4" |
| | | 9 | Nameplate |

*Dimensions in mm

