

# STB 606 V7

Bakery oven



Ref. 710492



- Change door opening: **optional**

## FEATURES

- Digital display in control panel system
- End of cycle alarm
- Door switch
- Interior LED light
- 3/4" water connection
- Easy to clean folding glass
- Rotation inverter
- USB port
- Multilevel

## FUNCTIONS

- Clima control-humidity regulation
- % step speed control
- Steam control-programmable chimney
- 99 cooking programs
- 3 cooking modes: dry heat, vapour and mixed
- Regeneration/maintain food temperature
- User configurable cooking book with pictures
- Multicook/All on time

## TECHNICAL CHARACTERISTICS

**Electric power** 10650 W

**Maximum temperature** Up to 300° C

**Weight** 116 kg

**Voltage** 400 V-50/60 Hz

**Connection** Three phase 3F+N+T

**Internal dimensions** (W)710x(D)500x(H)550 mm

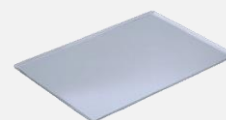
**External dimensions** (W)880x(D)955x(H)835 mm

**Automatic washing** optional

**Removable core probe** optional

## CAPACITY

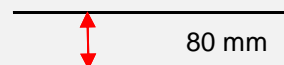
**6 trays GN1/1 - 600x400**



**Transverse tray position**



**Distance between trays**



# STB 606 V7

*Specific accessories*



## Stands

### STB 300

Ref. 710508



(W)810x(D)760x(H)300 mm

Nº guides - 0

### STB 650

Ref. 710509



(W)810x(D)760x(H)650 mm

Nº guides- 6

### STB 850

Ref. 710510



(W)810x(D)760x(H)850 mm

Nº guides - 8

## STB V7 Hood

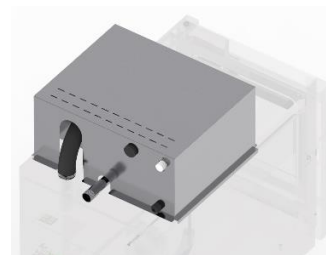
Ref. 710515



(W)880x(D)1105x(H)315 mm

## STB V7 Fumes condenser kit

Ref. 710518



(W)510x(D)210x(H)315 mm

## Superposition kit

Ref. 710519



(W)880x(D)935x(H)80 mm

## First installation kit

Ref. 710832



### The kit contains

Pipes, connections, adapters and required accesories for the oven installation

1 kg of detergent

1 kg of rinse

## Wheels

Ref. 710286



Wheeled option

## DECLARACIÓN UE DE CONFORMIDAD EU DECLARATION OF CONFORMITY

Directiva(s) del Consejo con la(s) que se declara conformidad:

*Council Directive(s) to which conformity is declared:*

**DC 2014/35/EU + DC 2014/30/EU + DC 2011/65/EU**

Aplicación de las Normas:

*Application of the Standards:*

**UNE-EN 60335-1:2012 + AC:2014 + A11:2014 + A13:2017 + A14:2014 + A2:2020 + A1:2020; UNE-EN 60335-2-42:2004 + Corr:2007 + A1:2008 + A11:2012; UNE-EN 55014-1:2017 + A11:2021; UNE-EN 55014-2:2015; UNE-EN 61000-3-2:2014; UNE-EN 61000-3-3:2013 + A1:2020**

Fabricante / *Manufacturer's name:*

**FM CALEFACCIÓN S.L.  
CIF: B-14343594**

Dirección / *Manufacturer's address:*

**CTRA. de Rute km.2.700, C.P.:14900, Lucena  
Cordoba, Spain**

Tipo de aparato / *Type of device:*

**HORNO / OVEN**

Marca / *Trade.:*

**FM CALEFACCIÓN**

Modelo / *Model no.:*

**STB 606 V7**

**N/S: 21XXXXXXXXXX**

**Nosotros, los abajo firmantes, declaramos bajo nuestra exclusiva responsabilidad que el equipo especificado cumple con la(s) Directiva(s) y Norma(s) mencionadas**

***We, the undersigned, hereby declare under our sole responsibility that the specified equipment is in conformity with the above Directive(s) and Standard(s)***

Lugar / *Place:* **Lucena**

Firma / *Signature:* **B-14343594**

Fecha / *Date:* **01/01/2021**



# STB 606 V7



TECHNICAL CHARACTERISTICS		CONNECTIONS	
Empty unit weight		1	Hose connection
Unit+packaging weight		2	Hood connection
Supply voltage	400 Vac - three phase	3	Fumes condenser connection
Frequency	50/60 Hz	4	Water connection 3/4"
Power cable	Hose 3F+N+T 4 mm <sup>2</sup>	5	Drain Ø40 mm
Sound pressure level	Below 70 dB	6	Safety gap ≥120 mm
Total power	10650 W	7	Fumes exit Ø80 mm
Thermal power	10000 W	8	Safety thermostat reset
		9	Core probe connection
		10	On/Off button
		11	USB/HACCP connection
		12	Nameplate

\*Dimensions in mm

