

COMPACT COMBI OVEN

STC 611 V7 W



Ref: 710862



TECHNICAL CHARACTERISTICS

Internal dimensions	(W)560 x (D)385 x (H)385 mm
External dimensions	(W)720 x (D)620 x (H)670 mm
Electric power	7.200 W
Maximum temperature	Up to 300°C
Weight	68 Kg
Voltage	400 V - 50/60 Hz
Connection	Three phase 3F + N + T

DESCRIPTION

Compact combi oven with capacity for up to **6 GN 1/1 trays of 40mm depth**, designed to elevate the cooking experience. It features the **TOUCHSCREEN V7** control panel with 7" touch screen and different selectable functions. All the intelligence in the smallest possible space.

CAPACITY

- 4 GN 1/1 depth 65mm
- 6 GN 1/1 depth 40mm
- 11 GN 1/1 depth 20mm



• Transversal tray position



STANDARD EQUIPMENT

- Control "TOUCHSCREEN V7"
- Rotation inverter.
- End of cycle alarm.
- Switch door.
- Hinged glass.
- Interior light LED.
- Water connection 3/4"
- Safety thermostat.
- USB port.

FEATURES

- CLIMA CONTROL**: injects humidity by setting the injection time.
- STEAM CONTROL**: programmes the extraction of moisture from the interior of the cooking chamber.
- FAN CONTROL**: allows you to set up to 10 bidirectional turbine speed levels.
- PREHEATING**: up to 3 types of oven preheating according to need.
- PLANNING**: programme in the time of the week's cooking, washings and recipes.
- MULTICOOK/ALL ON TIME**: multi-tray cooking allows different recipes to be prepared at the same time, either with different finishing times or by finishing all cooking at the same time.
- RECIPE BOOK**: stores up to 99 recipes with pictures and up to 6 cooking phases.
- SPECIAL CYCLES**: integrated cooking cycles such as proofing, regenerating or cooling.
- HOLD MODE**: allows the product to be kept at the desired temperature inside the chamber after planning a recipe.

OPTIONALS

- Wifi module**: Ref. 710789
- Change door opening**: Ref. 999H03

CERTIFICATES



SPECIFIC ACCESORIES

STC 611 V7 W



STANDS



ST-C 200 W
Ref.710477 (W)490x(D)670x(H)200mm
Nº guides - 0



ST-C 400 W
Ref.710478 (W)490x(D)670x(H)400mm
Nº guides - 0

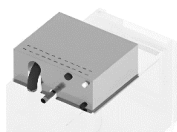


ST-C 650 W
Ref.710479 (W)490x(D)670x(H)650mm
Nº guides - 7



ST-C 850 W
Ref.710480 (W)490x(D)670x(H)850mm
Nº guides - 10

FUMES CONDENSER KIT



STC-W 1/1
Ref.710488 (W)720x(D)330x(H)235mm

STC-W 1/1 DUO
Ref.710715 (W)720x(D)330x(H)235mm

SUPERPOSITION KIT



ST-W 1/1
Ref.71486 (W)720x(D)625x(H)100mm

CLEANING PRODUCT



DETERGENT 5KG.
Ref.870H02

DETERGENT 10KG.
Ref.870H08



RINSE AID 5KG.
Ref.870H03

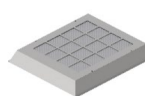
RINSE AID 10KG.
Ref.870H09

HOODS

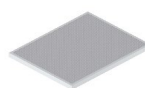


STC- W 1/1
Ref.710487 (W)720x(D)330x(H)235mm

STC- W 1/1 DUO
Ref.710714 (W)720x(D)330x(H)235mm



ACTIVE CARBON KIT
Ref.710907 (W)496x(D)538x(H)81mm



CARBON FILTER
Ref.710943 Replacement active carbon filter

FIRST INSTALLATION KIT



UNO V7
Ref.710832

DUO V7
Ref.710835

WIFI MODULE



Ref.710789

REMOVABLE PROBE KIT



MULTIPOINT
Ref.710620

VACUUM
Ref.710376

CE CERTIFICATE

STC 611 V7 W



DECLARACIÓN UE DE CONFORMIDAD

EU DECLARATION OF CONFORMITY

Directiva(s) del Consejo con la(s) que se declara conformidad:

Council Directive(s) to which conformity is declared:

DC 2014/35/EU + DC 2014/30/EU + DC 2011/65/EU

Aplicación de las Normas:

Application of the Standards:

UNE-EN 60335-1:2012 + AC:2014 + A11:2014 + A13:2017 + A14:2014 + A2:2020 + A1:2020; UNE-EN 60335-2-42:2004 + Corr:2007 + A1:2008 + A11:2012; UNE-EN 55014-1:2017 + A11:2021; UNE-EN 55014-2:2015; UNE-EN 61000-3-2:2014; UNE-EN 61000-3-3:2013 + A1:2020

Fabricante / Manufacturer's
name:

FM CALEFACCIÓN S.L.
CIF: B-14343594

Dirección / Manufacturer's
address:

CTRA. de Rute km.2.700, C.P.:14900, Lucena
Córdoba, España

Tipo de aparato / Type of
device:

HORNO / OVEN

Marca / Trade.:

FM CALEFACCIÓN

Modelo / Model no.:

STC 611 V7 W

N/S: 21XXXXXXXXXX

Nosotros, los abajo firmantes, declaramos bajo nuestra exclusiva responsabilidad que el equipo especificado cumple con la(s) Directiva(s) y Norma(s) mencionadas

We, the undersigned, hereby declare under our sole responsibility that the specified equipment is in conformity with the above Directive(s) and Standard(s)

Lugar / Place:

Lucena

Firma / Signature: **B-14343594**

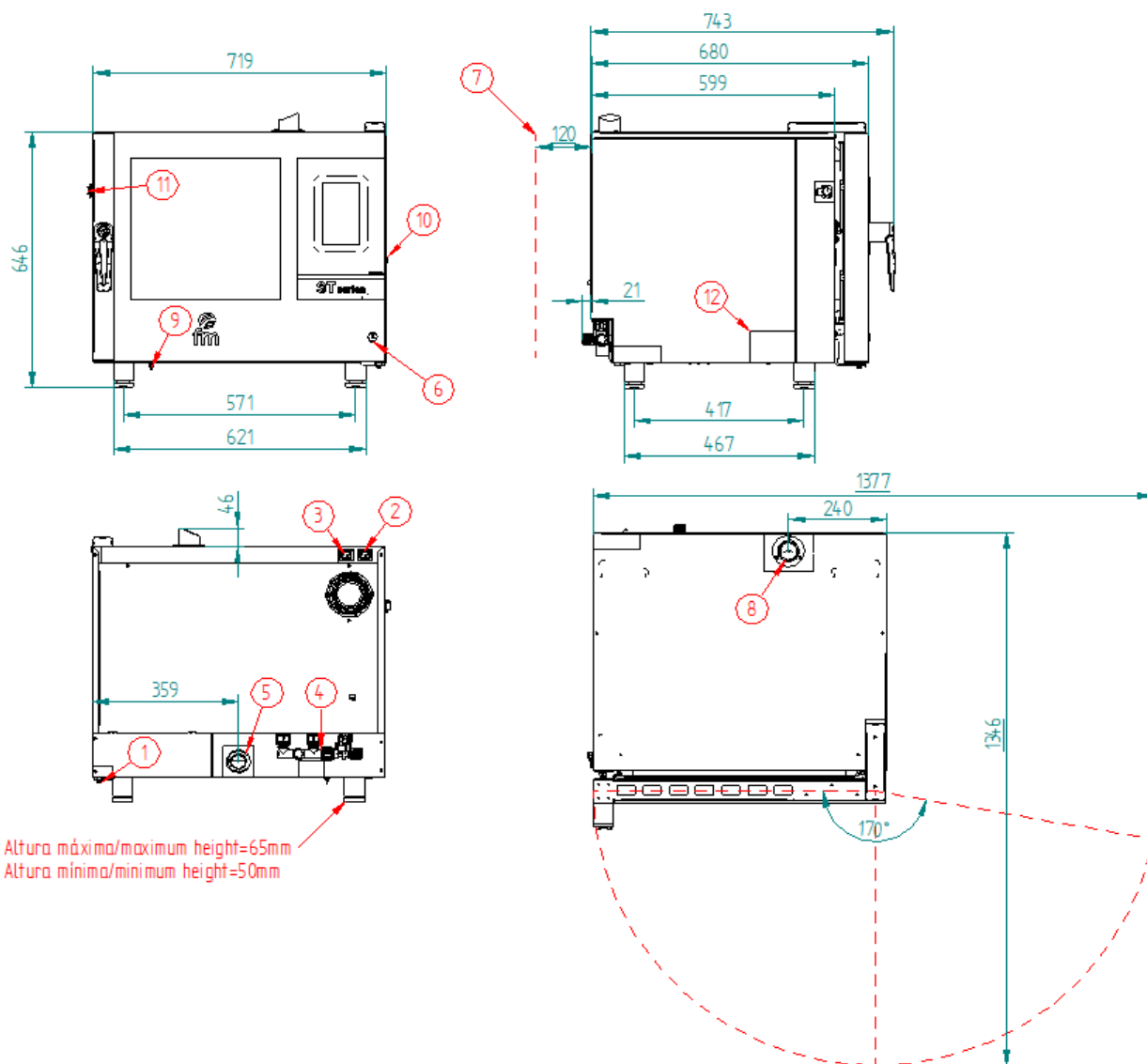
Fecha / Date:

01/01/2024



TECHNICAL CHARACTERISTICS

STC 611 V7 W



*Dimensions in mm

TECHNICAL CHARACTERISTICS	
Empty unit weight	
Unit+packaging weight	
Supply voltage	400Vac - Three phase
Frequency	50/60Hz
Cable de alimentación	Hood 3F+N+T 4mm2
Sound pressure level	Below to 70dB
Total power	7.200W
Thermal power	7.000W

CONNECTIONS	
1	Hose connection
2	Hood connection
3	Fumes condenser connection
4	Water connection 3/4"
5	Drain Ø40 mm
6	On/Off button
7	Safety gap ≥120 mm
8	Fumes exit Ø 50 mm
9	Safety thermostat reset
10	USB/HACCP connection
11	Core probe connection
12	Nameplate