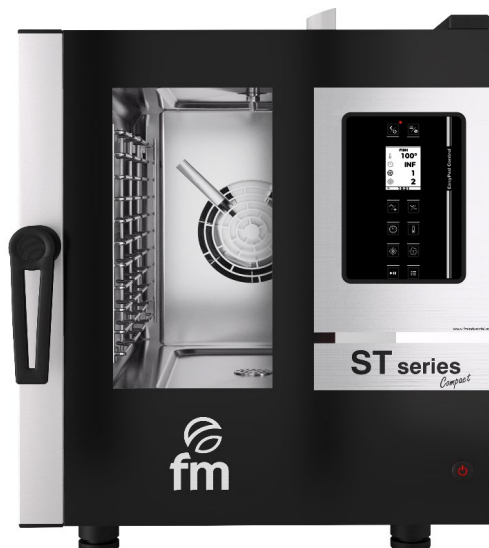


COMPACT COMBI OVEN

STC 611 V2.4

Ref: 710857



TECHNICAL CHARACTERISTICS

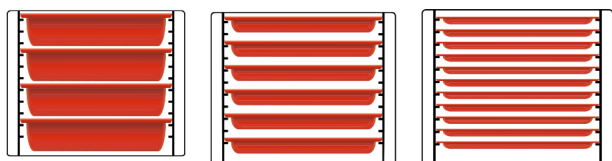
Internal dimensions	(W)385 x (D)560 x (H)385 mm
External dimensions	(W)530 x (D)775 x (H)670 mm
Electric power	7.200 W
Maximum temperature	250°C
Weight	74 Kg
Voltage	400 V - 50/60 Hz
Connection	Three phase 3F + N + T

DESCRIPTION

Compact combi oven with capacity for **6 GN 1/1 trays up to 40mm deep**, designed to elevate the cooking experience. It is equipped with the **DIGITAL PAD V2.4** control panel, a 2.4 inch LCD display screen and different functions selectable with its push-button panel. All the intelligence in the smallest possible space.

CAPACITY

- 4 GN 1/1 depth 65 mm trays
- 6 GN 1/1 depth 40 mm trays
- 11 GN 1/1 depth 20 mm trays



- Longitudinal tray position



STANDARD EQUIPMENT

- Control "DIGITAL PAD V 2.4"
- Rotation Inverter.
- End of cycle alarm.
- Door switch.
- Hinged glass.
- Interior LED light.
- 3/4 " water connection.
- Safety thermostat.
- USB port

FEATURES

- **COOKING PHASES:** up to 3 cooking phases.
- **CLIMA CONTROL:** injects humidity by setting one of the 4 available injection levels.
- **MANUAL CHIMNEY CONTROL:** manually extracts or maintains steam inside the cooking chamber.
- **FAN CONTROL:** allows you to set up to 2 levels of bi-directional turbine speed.
- **PREHEATING:** automatic preheating of the oven before cooking.
- **RECIPE BOOK:** possibility of storing your favourite recipes in the oven's internal memory.
- **QR CONTROL:** connect the oven to a smart device via QR and easily modify and import recipes.

OPTIONALS

- **Self-cleaning** Ref. 710914
- **Core probe** Ref. 710913

CERTIFICATES



SPECIFIC ACCESORIES

STC 611 V2.4



STANDS



ST-C 200
Ref.710471 (W)490x(D)670x(H)200mm
Nº guides - 0



ST-C 400
Ref.710472 (W)490x(D)670x(H)400mm
Nº guides - 0

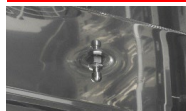


ST-C 650
Ref.710473 (W)490x(D)670x(H)650mm
Nº guides - 7



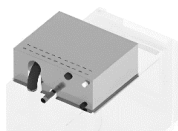
ST-C 850
Ref.710474 (W)490x(D)670x(H)850mm
Nº guides - 10

SELF-CLEANING



STC 2,4
Ref.710914

FUMES CONDENSER KIT



STC
Ref.710487 (W)530x(D)475x(H)235mm

STC- DUO
Ref.710714 (W)530x(D)475x(H)235mm

SUPERPOSITION KIT



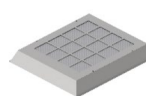
ST-1/1
Ref.71484 (W)530x(D)800x(H)100mm

HOODS



STC-1/1
Ref.710481 (W)530x(D)915x(H)235mm

STC-1/1 DUO
Ref.710702 (W)530x(D)915x(H)235mm



ACTIVE CARBON KIT
Ref.710907 (W)496x(D)538x(H)81mm



REPLACEMENT FILTER
Ref.710943 Replacement active carbon filter

REMOVABLE PROBE KIT



CORE
Ref.710913

FIRST INSTALLATION KIT



UNO V2,4
Ref.710916

DUO V2,4
Ref.710939

CLEANING PRODUCTS



ACTIVE DUAL CLEAN 5 KG.
Ref.710918

ACTIVE DUAL CLEAN
Ref.710919

CE CERTIFICATE

STC 611 V2.4



DECLARACIÓN UE DE CONFORMIDAD

EU DECLARATION OF CONFORMITY

Directiva(s) del Consejo con la(s) que se declara conformidad:

Council Directive(s) to which conformity is declared:

DC 2014/35/EU + DC 2014/30/EU + DC 2011/65/EU

Aplicación de las Normas:

Application of the Standards:

UNE-EN 60335-1:2012 + AC:2014 + A11:2014 + A13:2017 + A14:2014 + A2:2020 + A1:2020; UNE-EN 60335-2-42:2004 + Corr:2007 + A1:2008 + A11:2012; UNE-EN 55014-1:2017 + A11:2021; UNE-EN 55014-2:2015; UNE-EN 61000-3-2:2014; UNE-EN 61000-3-3:2013 + A1:2020

Fabricante / Manufacturer's
name:

FM CALEFACCIÓN S.L.
CIF: B-14343594

Dirección / Manufacturer's
address:

**CTRA. de Rute km.2.700, C.P.:14900, Lucena
Córdoba, España**

Tipo de aparato / Type of
device:

HORNO / OVEN

Marca / Trade.:

FM CALEFACCIÓN

Modelo / Model no.:

STC 611 V2.4

N/S: 21XXXXXXXXXX

**Nosotros, los abajo firmantes, declaramos bajo nuestra exclusiva responsabilidad que el
equipo especificado cumple con la(s) Directiva(s) y Norma(s) mencionadas**

**We, the undersigned, hereby declare under our sole responsibility that the specified
equipment is in conformity with the above Directive(s) and Standard(s)**

Lugar / Place:

Lucena

Firma / Signature: **B-14343594**

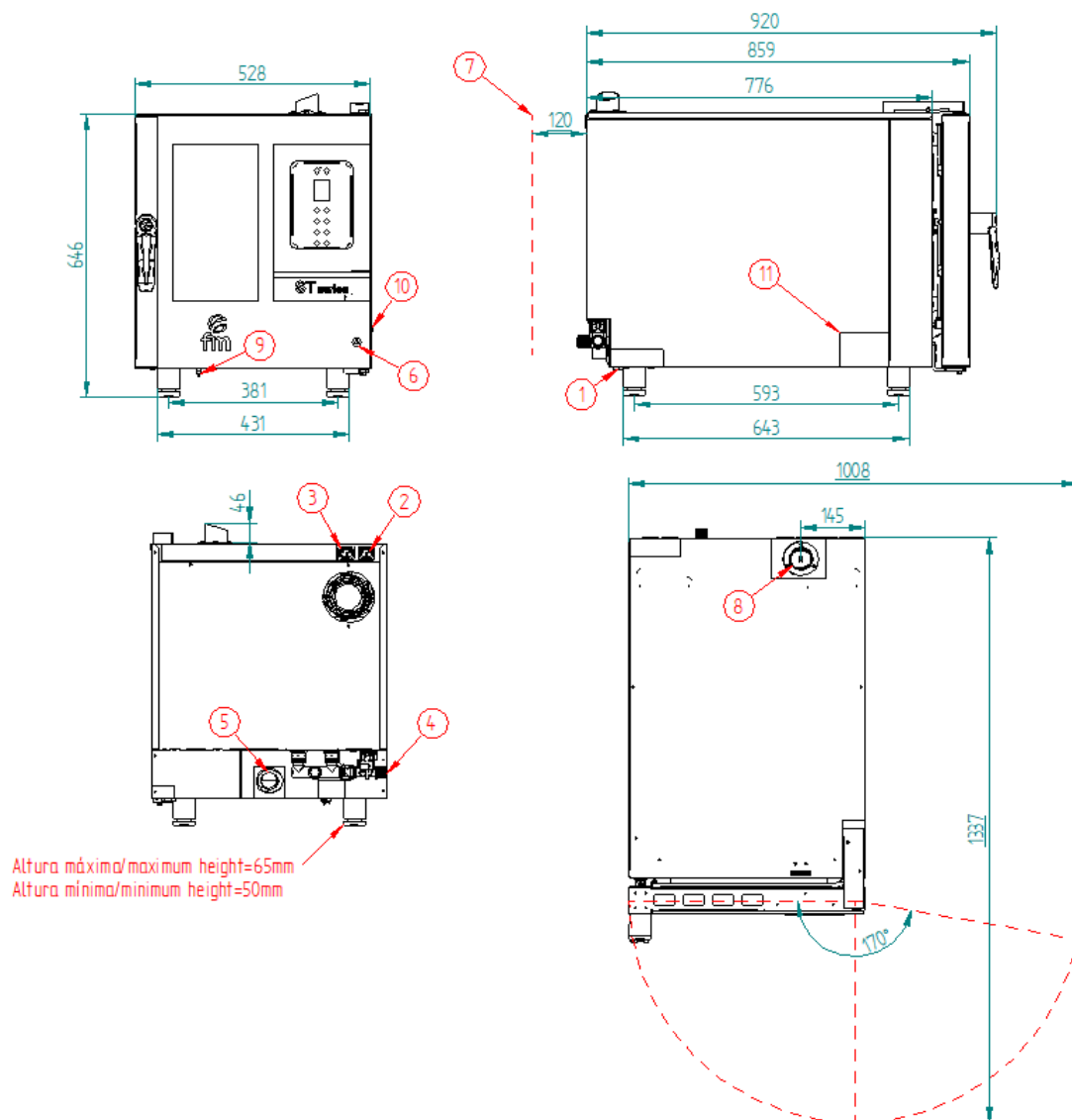
Fecha / Date:

01/01/2024



TECHNICAL CHARACTERISTICS

STC 611 V2.4



*Dimensions in mm

TECHNICAL CHARACTERISTICS	
Empty unit weight	
Unit + packaging weight	
Supply voltage	400Vac - Three phase
Frequency	50/60Hz
Supply voltage	Hood 3F+N+T 4mm2
Sound pressure level	Below to 70dB
Total power	7.200W
Thermal power	7.000W

CONNECTIONS	
1	Hose connection
2	Hood connection
3	Fumes condenser connection
4	Water connection 3/4"
5	Drain Ø40 mm
6	On/Off button
7	Safety gap ≥120 mm
8	Fumes exit Ø 50 mm
9	Safety thermostat reset
10	Core probe connection
11	Nameplate