

# COMPACT COMBI OVEN

## STC 623 V7

Ref: 710856



### TECHNICAL CHARACTERISTICS

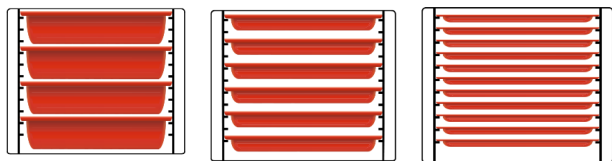
Internal dimensions	(W)385 x (D)385 x (H)385 mm
External dimensions	(W)530 x (D)600 x (H)670 mm
Electric power	5.700 W
Maximum temperature	Up to 300°C
Weight	69 Kg
Voltage	400 V - 50/60 Hz
Connection	Three phase 3F + N + T

### DESCRIPTION

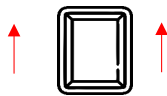
Compact combi oven with capacity for up to **6 GN 2/3 trays of 40mm depth**, designed to elevate the cooking experience. It features the **TOUCHSCREEN V7** control panel with 7" touch screen and different selectable functions. All the intelligence in the smallest possible space.

### CAPACITY

- 4 GN 2/3 depth 65mm
- 6 GN 2/3 depth 40mm
- 11 GN 2/3 depth 20mm



- Longitudinal tray position



### STANDARD EQUIPMENT

- Control "TOUCHSCREEN V7"
- Rotation inverter.
- End of cycle alarm.
- Switch door.
- Hinged glass.
- Interior light LED.
- Water connection 3/4"
- Safety thermostat.
- USB port.

### FEATURES

- **CLIMA CONTROL:** injects humidity by setting the injection time.
- **STEAM CONTROL:** programmes the extraction of moisture from the interior of the cooking chamber.
- **FAN CONTROL:** allows you to set up to 10 bidirectional turbine speed levels.
- **PREHEATING:** up to 3 types of oven preheating according to need.
- **PLANNING:** programme in the time of the week's cooking, washings and recipes.
- **MULTICOOK/ALL ON TIME:** multi-tray cooking allows different recipes to be prepared at the same time, either with different finishing times or by finishing all cooking at the same time.
- **RECIPE BOOK:** stores up to 99 recipes with pictures and up to 6 cooking phases.
- **SPECIAL CYCLES:** integrated cooking cycles such as proofing, regenerating or cooling.
- **HOLD MODE:** allows the product to be kept at the desired temperature inside the chamber after planning a recipe.

### OPTIONAL

- **Wifi connection:** Ref. 710789
- **Change door opening:** Ref. 999H03
- **Single phase modification:** Ref. 000054

### CERTIFICATES



# SPECIFIC ACCESORIES

## STC 623 V7



### STANDS

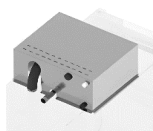


**ST-C 650 B**  
Ref.710475 (An)490x(F)495x(Al)650mm  
Nº guías - 7



**ST-C 850 B**  
Ref.710476 (An)490x(F)495x(Al)850mm  
Nº guías - 10

### FUMES CONDENSER KIT



**STC-2/3**  
Ref.710712 (An)530x(F)330x(Al)235mm

**STC-2/3 DUO**  
Ref.710713 (An)530x(F)330x(Al)235mm

### SUPERPOSITION KIT



**ST-2/3**  
Ref.71485 (An)530x(F)625x(Al)100mm

**ST-2/3**  
Ref.71485

### CLEANING PRODUCTS



**DETERGENT 5KG.**  
Ref.870H02

**DETERGENT 10KG.**  
Ref.870H08



**RINSE AID 5KG.**  
Ref.870H03

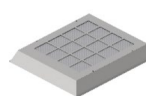
**RINSE AID 10KG.**  
Ref.870H09

### HOODS



**STC-2/3**  
Ref.710482 (An)530x(F)735x(Al)235mm

**STC-2/3 DUO**  
Ref.710701 (An)530x(F)735x(Al)235mm



**KIT CARBÓN  
ACTIVO**  
Ref.710907 (An)496x(F)538x(Al)81mm

### INSTALLATION KIT



**UNO V7**  
Ref.710832

**DUO V7**  
Ref.710835

### REMOVABLE PROBE KIT



**MULTIPOINT**  
Ref.710620

**VACUUM**  
Ref.710376

### WIFI MODULE



Ref.710789

# CE CERTIFICATE

## STC 623 V7



### **DECLARACIÓN UE DE CONFORMIDAD**

### **EU DECLARATION OF CONFORMITY**

Directiva(s) del Consejo con la(s) que se declara conformidad:

Council Directive(s) to which conformity is declared:

**DC 2014/35/EU + DC 2014/30/EU + DC 2011/65/EU**

Aplicación de las Normas:

Application of the Standards:

**UNE-EN 60335-1:2012 + AC:2014 + A11:2014 + A13:2017 + A14:2014 + A2:2020 + A1:2020; UNE-EN 60335-2-42:2004 + Corr:2007 + A1:2008 + A11:2012; UNE-EN 55014-1:2017 + A11:2021; UNE-EN 55014-2:2015; UNE-EN 61000-3-2:2014; UNE-EN 61000-3-3:2013 + A1:2020**

Fabricante / Manufacturer's  
name:

**FM CALEFACCIÓN S.L.**  
**CIF: B-14343594**

Dirección / Manufacturer's  
address:

**CTRA. de Rute km.2.700, C.P.:14900, Lucena**  
**Córdoba, España**

Tipo de aparato / Type of  
device:

**HORNO / OVEN**

Marca / Trade.:

**FM CALEFACCIÓN**

Modelo / Model no.:

**STC 623 V7**

**N/S: 21XXXXXXXXXX**

**Nosotros, los abajo firmantes, declaramos bajo nuestra exclusiva responsabilidad que el equipo especificado cumple con la(s) Directiva(s) y Norma(s) mencionadas**

**We, the undersigned, hereby declare under our sole responsibility that the specified equipment is in conformity with the above Directive(s) and Standard(s)**

Lugar / Place:

**Lucena**

Firma / Signature: **B-14343594**

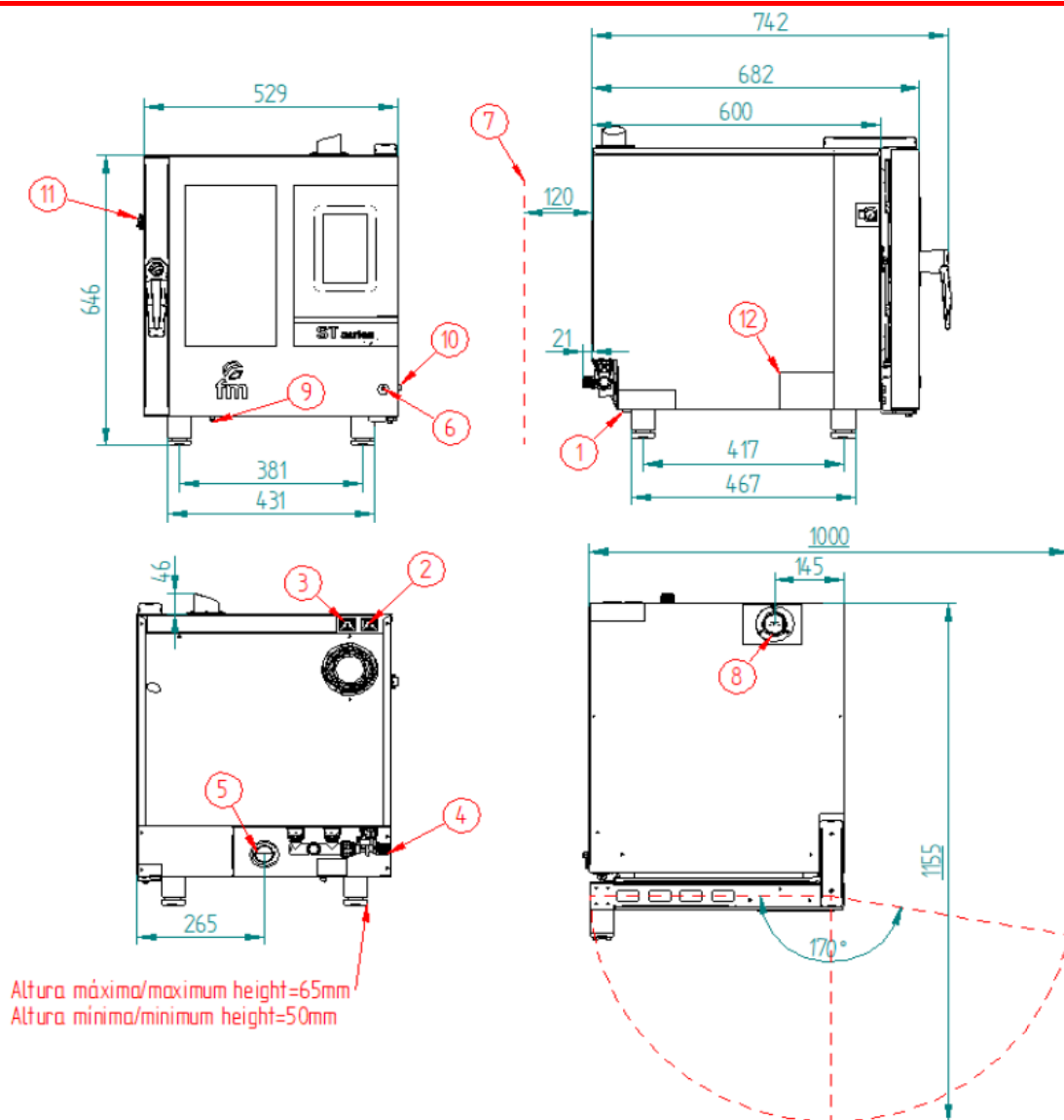
Fecha / Date:

**01/01/2024**



# TECHNICAL CHARACTERISTICS

## STC 623 V7



\*Dimensions in mm

### TECHNICAL CHARACTERISTICS

Empty unit weight	
Unit+packaging weight	
Supply voltage	400Vac - Trifásica
Frequency	50/60Hz
Cable de alimentación	Manguera 3F+N+T 4mm2
Sound pressure level	Inferior a 70dB
Total power	5.700W
Thermal power	5.500W

### CONNECTIONS

1	Manguera alimentación
2	Conexión campana extracción
3	Conexión condensador de vapores
4	Conexión toma de agua
5	Desagüe Ø40mm
6	Interruptor encendido/apagado
7	Separación de seguridad ≥120mm
8	Salida de gases calientes Ø50mm
9	Rearme termostato seguridad
10	USB/HACCP connection
11	Core probe connection
12	Nameplate