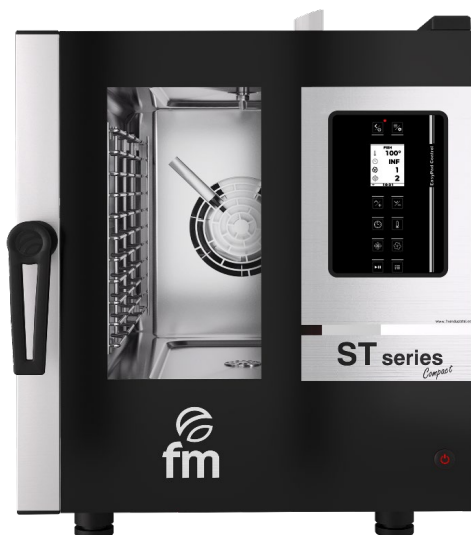


# COMPACT COMBI OVEN

## STC 623 V2.4

Ref: 710855



### TECHNICAL CHARACTERISTICS

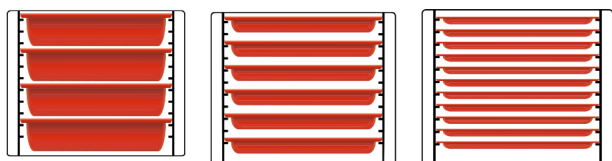
Internal dimensions	(W)385 x (D)385 x (H)385 mm
External dimensions	(W)530 x (D)600 x (H)670 mm
Electric power	5.700 W
Maximum temperature	250°C
Weight	63 Kg
Voltage	400 V - 50/60 Hz
Connection	Three phase 3F + N + T

### DESCRIPTION

Compact combi oven with capacity for **6 GN 2/3 trays up to 40mm deep**, designed to elevate the cooking experience. It is equipped with the **DIGITAL PAD V2.4** control panel, a 2.4 inch LCD display screen and different functions selectable with its push-button panel. All the intelligence in the smallest possible space.

### CAPACITY

- 4 GN 2/3 depth 65 mm trays
- 6 GN 2/3 depth 40 mm trays
- 11 GN 2/3 depth 20 mm trays



- Longitudinal tray position



### STANDARD EQUIPMENT

- Control "**DIGITAL PAD V 2.4**"
- Rotation Inverter.
- End of cycle alarm.
- Door switch.
- Hinged glass.
- Interior LED light.
- 3/4 " water connection.
- Safety thermostat.
- USB port

### FEATURES

- **COOKING PHASES:** up to 3 cooking phases.
- **CLIMA CONTROL:** injects humidity by setting one of the 4 available injection levels.
- **MANUAL CHIMNEY CONTROL:** manually extracts or maintains steam inside the cooking chamber.
- **FAN CONTROL:** allows you to set up to 2 levels of bi-directional turbine speed.
- **PREHEATING:** automatic preheating of the oven before cooking.
- **RECIPE BOOK:** possibility of storing your favourite recipes in the oven's internal memory.
- **QR CONTROL:** connect the oven to a smart device via QR and easily modify and import recipes.

### OPTIONAL

- **Self-cleaning:** Ref. 710914
- **Core probe:** Ref. 710913
- **Single phase modification:** Ref. 000054

### CERTIFICATES



# SPECIFIC ACCESORIES

## STC 623 V2.4



### STANDS

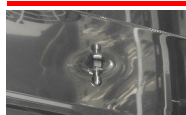


**ST-C 650 B**  
Ref.710475 (W)490x(D)495x(H)650mm  
Nº guides - 7



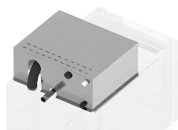
**ST-C 850 B**  
Ref.710476 (W)490x(D)495x(H)850mm  
Nº guides - 10

### SELF-CLEANING



**STC 2,4**  
Ref.710914

### FUMES CONDENSER KIT



**STC-2/3**  
Ref.710712 (W)530x(D)330x(H)235mm

**STC-2/3 DUO**  
Ref.710713 (W)530x(D)330x(H)235mm

### SUPERPOSITION KIT

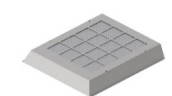


**ST-2/3**  
Ref.71485 (An)530x(F)625x(Al)100mm

### HOODS



**STC-2/3**  
Ref.710482 (W)530x(D)735x(H)235mm



**STC-2/3 DUO**  
Ref.710701 (W)530x(D)735x(H)235mm

**ACTIVE CARBON KIT**  
Ref.710907 (W)496x(D)538x(H)81mm

### REMOVABLE PROBE KIT



**CORE**  
Ref.710913

### FIRST INSTALLATION KIT



**UNO V2,4**  
Ref.710916

**DUO V2,4**  
Ref.710939

### CLEANING PRODUCTS



**ACTIVE DUAL CLEAN 5 KG.**  
Ref.710918

**ACTIVE DUAL CLEAN**  
Ref.710919

# CE CERTIFICATE

## STC 623 V2.4



### **DECLARACIÓN UE DE CONFORMIDAD**

### **EU DECLARATION OF CONFORMITY**

Directiva(s) del Consejo con la(s) que se declara conformidad:

Council Directive(s) to which conformity is declared:

**DC 2014/35/EU + DC 2014/30/EU + DC 2011/65/EU**

Aplicación de las Normas:

Application of the Standards:

**UNE-EN 60335-1:2012 + AC:2014 + A11:2014 + A13:2017 + A14:2014 + A2:2020 + A1:2020; UNE-EN 60335-2-42:2004 + Corr:2007 + A1:2008 + A11:2012; UNE-EN 55014-1:2017 + A11:2021; UNE-EN 55014-2:2015; UNE-EN 61000-3-2:2014; UNE-EN 61000-3-3:2013 + A1:2020**

Fabricante / Manufacturer's  
name:

**FM CALEFACCIÓN S.L.**  
**CIF: B-14343594**

Dirección / Manufacturer's  
address:

**CTRA. de Rute km.2.700, C.P.:14900, Lucena**  
**Córdoba, España**

Tipo de aparato / Type of  
device:

**HORNO / OVEN**

Marca / Trade.:

**FM CALEFACCIÓN**

Modelo / Model no.:

**STC 623 V2.4**

**N/S: 24XXXXXXXXXX**

**Nosotros, los abajo firmantes, declaramos bajo nuestra exclusiva responsabilidad que el equipo especificado cumple con la(s) Directiva(s) y Norma(s) mencionadas**

**We, the undersigned, hereby declare under our sole responsibility that the specified equipment is in conformity with the above Directive(s) and Standard(s)**

Lugar / Place:

**Lucena**

Firma / Signature: **B-14343594**

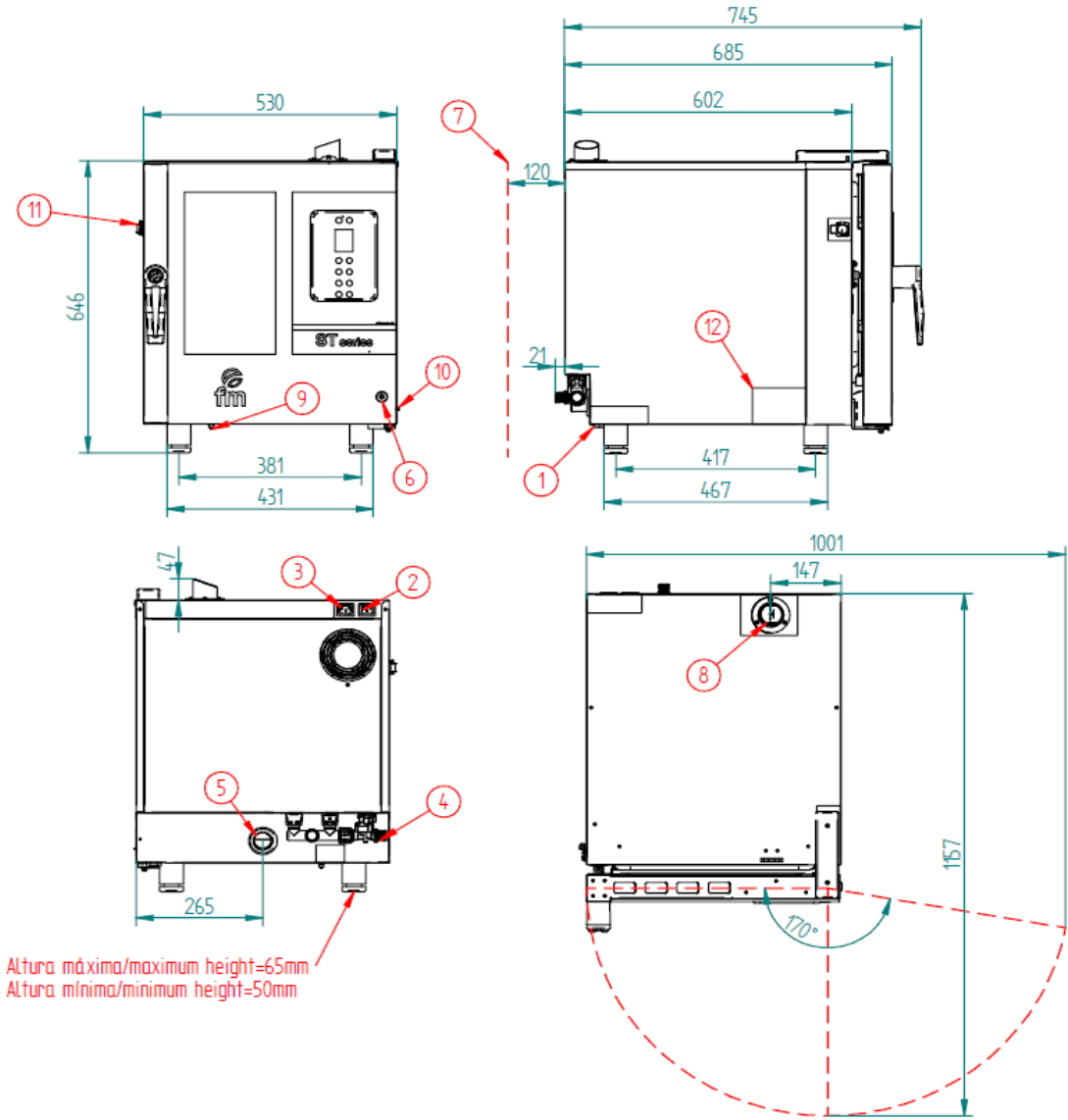
Fecha / Date:

**01/01/2024**



TECHNICAL CHARACTERISTICS

STC 623 V2.4



\*Dimensions in mm

TECHNICAL CHARACTERISTICS	
Empty unit weight	
Unit + packaging weight	
Supply voltage	400Vac - Three phase
Frequency	50/60Hz
Power cable	Hose 3F+N+T 4mm2
Sound pressure level	Below to 70dB
Total power	5.700W
Thermal power	5.500W

CONNECTIONS	
1	Hose connection
2	Hood connection
3	Fumes condenser connection
4	Water connection 3/4"
5	Drain Ø40 mm
6	On/Off button
7	Safety gap ≥120 mm
8	Fumes exit Ø 50 mm
9	Safety thermostat reset
10	USB/HACCP connection
11	Core probe connection
12	Nameplate







