

ULTRA-FAST COOKING OVEN (CONVECTION + MICROWAVE)

ST - F 41

Ref: 710905



TECHNICAL CHARACTERISTICS

Internal dimensions	(W)480 x (D)405 x (H)305 mm
External dimensions	(W)590 x (D)750 x (H)675 mm
Total power	5.600 W
Convection power	3.500 W
Microwave power	1.000 W
Maximum temperature	275 °C
Weight	98 Kg
Voltage	400 V - 50/60 Hz
Connection	Three phase 3F+N+T



DESCRIPTION

Ultra-fast cooking oven (convection + microwave) with capacity for up to **3 trays of 430x340** size, designed to guarantee shorter cooking times than conventional ovens. It has a high-resolution touch panel that will allow you to control all aspects of the oven quickly, intuitively and easily. With its wifi connectivity you can control any aspect of the oven remotely from anywhere with an internet connection.

CAPACITY

• 3 x 430x340 mm tray



STANDARD EQUIPMENT

- High resolution touch panel
- Cyclonic cooling system
- Integrated Wifi connection
- High thermal insulation
- Integrated USB port
- HACCP data download capability
- Cloud connectivity

FEATURES

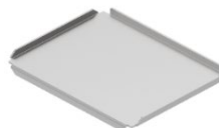
- **CONVECTION MODE:** in this mode, only the heating element of the appliance will be activated to cook the food.
- **CONVECTION + MICROWAVE MODE:** in this mode, the microwaves are activated together with the heating element of the appliance.
- **MAINTENANCE MODE:** allows you to keep the inside of the oven chamber always at the right temperature before starting the desired recipe.
- **COOLING:** allows you to cool the inside of the oven chamber more efficiently.
- **RECIPEBOOK:** with its integrated recipe book, you can store up to 300 recipes with up to 9 different phases each.
- **MESSAGES AND NOTIFICATIONS:** possibility of sending messages and notifications to the oven screen from an external device.
- **GEOLOCATION:** you will be able to geolocate the oven thanks to its connectivity with Connecty.Cloud.

INCLUDED ACCESORIES

- **PADDLE ST-F 21/22** – Ref. 710746



- **INOX TRAY** - Ref.710750



CERTIFICATE



OPTIONAL ACCESORIES

ST - F 41



STANDS



ST-F 41/42
Ref.710748

(W)525x(D)700x(H)950mm

PINCH



PINCH
Ref.710878

TRAYS



INOX TRAY
Ref.710749

300X300 mm



INOX TRAY
Ref.710750

430X340 mm



TEFLON TRAY
PERFORATED BOTTOM
Ref.710754

270X270 mm



TEFLON TRAY
REINFORCED
PERFORATED
Ref.710945

270X270 mm



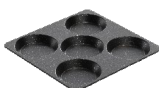
TEFLON TRAY PLAIN
BOTTOM
Ref.710755

265X265 mm



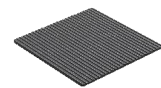
TEFLON TRAY
REINFORCED PLAIN
Ref.710946

270X270 mm



5 EGGS TRAY
Ref.710882

280X290 mm



NON-STICK ALUMINIUM
TRAY
Ref.710884

310X295 mm

PANS



NON-STICK ALUMINIUM
PAN SQUARE PLAIN D
3MM.
Ref.710879

260X260 mm



NON-STICK ALUMINIUM
PAN SQUARE GRATED D
3MM.
Ref.710880

260X260 mm



NON-STICK ROASTING
AND BAKING PAN Ø19
CM
Ref.710881

190X190 mm



NON-STICK ALUMINIUM
BOWL D 5 MM.
Ref.710883

240X150 mm

PADDLES



PADDLE ST-F 32
Ref.710944

380x380 mm



NON-STICK ALUMINIUM
PADDLE
Ref.710885

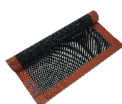
425X295 mm

LINERS



TEFLON PLAIN LINING
Ref.710752

400X300 mm



PERFORATED SILICONE
LINER
Ref.710753

400x300 mm

STARTERT KIT



STARTER KIT ARTICLES

REFERENCES

PINCH	710878
NON STICK ALUMINIUM BOWL	710883
NON-STICK ALUMINIUM TRAY	710884
TEFLON TRAY PLAIN BOTTOM	710755

CE CERTIFICATE

ST - F 41



DECLARACIÓN UE DE CONFORMIDAD

EU DECLARATION OF CONFORMITY

Directiva(s) del Consejo con la(s) que se declara conformidad:

Council Directive(s) to which conformity is declared:

DC 2014/35/EU + DC 2014/30/EU + DC 2011/65/EU

Aplicación de las Normas:

Application of the Standards:

UNE-EN 60335-1:2012 + AC:2014 + A11:2014 + A13:2017 + A14:2014 + A2:2020 + A1:2020; UNE-EN 60335-2-42:2004 + Corr:2007 + A1:2008 + A11:2012; UNE-EN 55014-1:2017 + A11:2021; UNE-EN 55014-2:2015; UNE-EN 61000-3-2:2014; UNE-EN 61000-3-3:2013 + A1:2020

Fabricante / Manufacturer's
name:

FM CALEFACCIÓN S.L.
CIF: B-14343594

Dirección / Manufacturer's
address:

CTRA. de Rute km.2.700, C.P.:14900, Lucena
Córdoba, España

Tipo de aparato / Type of
device:

HORNO / OVEN

Marca / Trade.:

FM CALEFACCIÓN

Modelo / Model no.:

ST - F 41

N/S: 21XXXXXXXXXX

Nosotros, los abajo firmantes, declaramos bajo nuestra exclusiva responsabilidad que el equipo especificado cumple con la(s) Directiva(s) y Norma(s) mencionadas

We, the undersigned, hereby declare under our sole responsibility that the specified equipment is in conformity with the above Directive(s) and Standard(s)

Lugar / Place:

Lucena

Firma / Signature: **B-14343594**

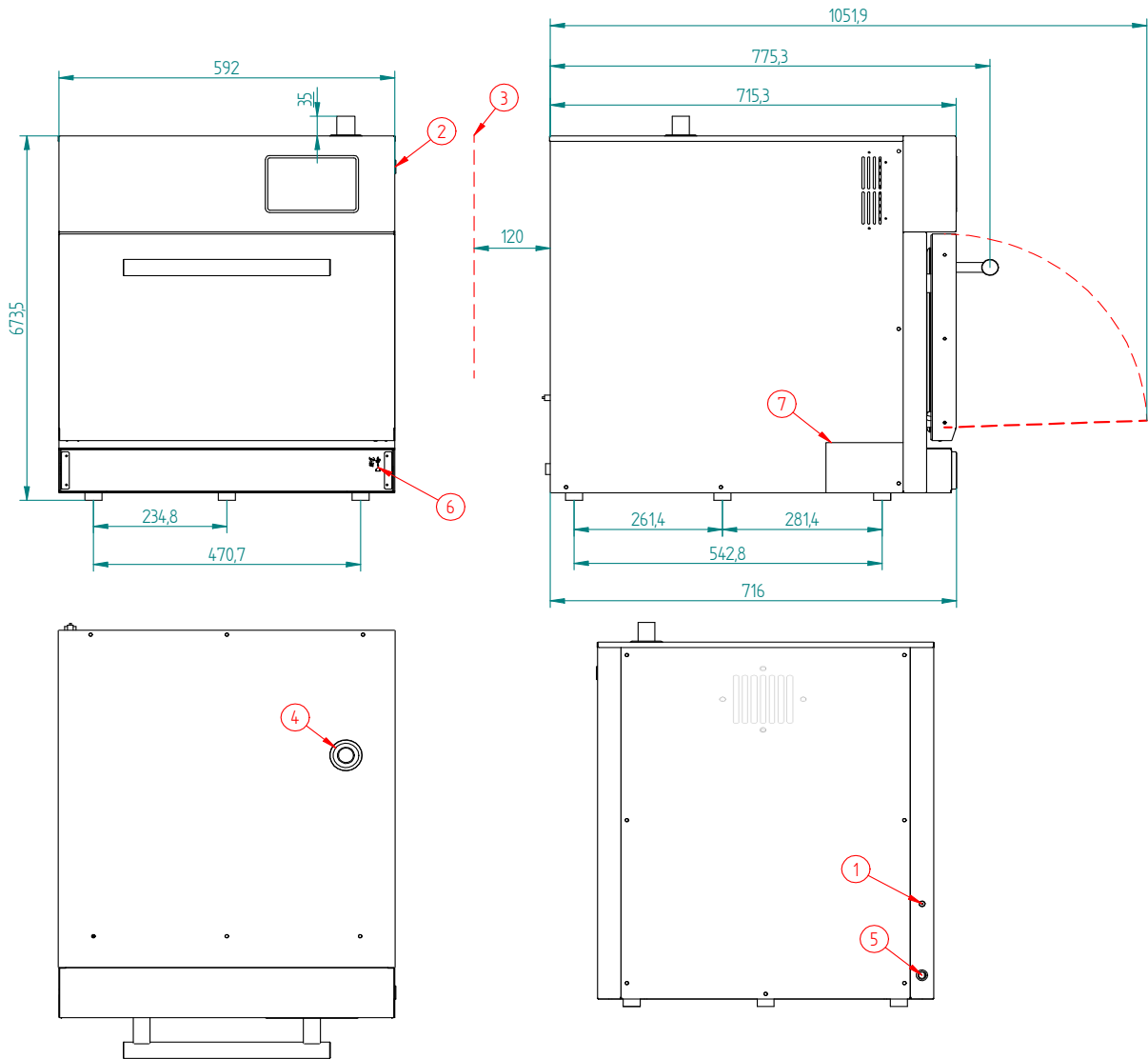
Fecha / Date:

01/07/2021



TECHNICAL CHARACTERISTICS

ST - F 41



*Dimensions in mm

TECHNICAL CHARACTERISTICS

Net weight (only oven)	
Gross weight (oven + packaging)	
Supply voltage	400Vac - Three phase
Frequency	50Hz
Power cable	Hose 3F+N+T 4mm2
Sound pressure level	Below to 70dB
Total power	5.600W
Convection power	3.500W
Microwave power	1.000W
Average consumption in maintenance mode	1,1 kWh

CONNECTIONS

1	Hose connection
2	On/off button
3	Safety gap≥120mm
4	Hot fumes outlet Ø12mm
5	Safety thermostat reset (behind the cover)
6	USB/HACCP Connection
7	Nameplate

CONNECTION TYPES

Plug type CETAC 32 A
Magnetothermic type D20A or C25A