

ULTRA-FAST COOKING OVEN (CONVECTION + MICROWAVE)

ST - F 21 BLACK V24



Ref: 710866



TECHNICAL CHARACTERISTICS

Internal dimensions	(W)320 x (D)310 x (H)190 mm
External dimensions	(W)425 x (D)630 x (H)580 mm
Total power	3.750 W
Convection power	2.200 W
Microwave power	1.000 W
Maximum temperature	275 °C
Weight	78 Kg
Voltage	230 V - 50 Hz
Connection	Single phase schuko



DESCRIPTION

Ultra-fast cooking oven (convection + microwave) with capacity for up to **1 tray of 300x300 size**, designed to guarantee shorter cooking times than conventional ovens. It has a high-resolution touch panel that will allow you to control all aspects of the oven quickly, intuitively and easily. With its wifi connectivity you can control any aspect of the oven remotely from anywhere with an internet connection.

CAPACITY

- 1 x 300x300 mm tray



STANDARD EQUIPMENT

- High resolution touch panel
- Cyclonic cooling system
- Integrated catalytic converter
- Integrated Wifi connection
- High thermal insulation
- Integrated USB port
- HACCP data download capability
- Cloud connectivity
- Average power consumption in maintenance mode 0,9 kWh

FEATURES

- **CONVECTION MODE:** in this mode, only the heating element of the appliance will be activated to cook the food.
- **CONVECTION + MICROWAVE MODE:** in this mode, the microwaves are activated together with the heating element of the appliance.
- **MAINTENANCE MODE:** allows you to keep the inside of the oven chamber always at the right temperature before starting the desired recipe.
- **COOLING:** allows you to cool the inside of the oven chamber more efficiently.
- **RECIPEBOOK:** with its integrated recipe book, you can store up to 300 recipes with up to 9 different phases each.
- **MESSAGES AND NOTIFICATIONS:** possibility of sending messages and notifications to the oven screen from an external device.
- **GEOLOCATION:** you will be able to geolocate the oven thanks to its connectivity with Connecty.Cloud.

INCLUDED ACCESORIES

- **PADDLE ST-F 21/22** – Ref. 710746



- **INOX TRAY** - Ref. 710749



- **TEFLON TRAY PERFORATED BOTTOM** - Ref. 710754



CERTIFICATE



OPTIONAL ACCESORIES

ST - F 21 BLACK V24



STANDS



ST-F 21/22
Ref.710747

(W)430x(D)625x(H)950mm

UPPER ACCESSORY



ST-F 21/22
Ref.710931

(W)425x(D)520x(H)55mm



ST-F 21/22 BLACK
Ref.710932

(W)425x(D)520x(H)55mm

TRAYS



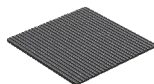
NON-STICK ALUMINIUM
PADDLE
Ref.710885

425X295 mm



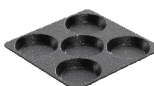
TEFLON TRAY PLAIN
BOTTOM
Ref.710755

265X265 mm



NON-STICK ALUMINIUM
TRAY
Ref.710884

310X295 mm



5 EGGS TRAY
Ref.710882

280X290 mm

REINFORCED TRAYS



TEFLON TRAY
REINFORCED PLAIN
Ref.710945

270X270 mm



TEFLON TRAY
REINFORCED
PERFORATED
Ref.710946

270X270 mm

STARTERT KIT



ADHESIVE TEFLONS



ST-F 21/22
Ref.710886

Adhesive Teflon Oven Liners ST
Fast

VENTILATION DUCT



ST-F 21/22
Ref.710934

(W)425x(D)40x(H)150mm



ST-F 21/22 BLACK
Ref.710935

(W)425x(D)40x(H)150mm

PANS



NON-STICK ROASTING
AND BAKING PAN Ø19
CM
Ref.710881

190X190 mm



NON-STICK ALUMINIUM
PAN SQUARE PLAIN D
3MM.
Ref.710879

260X260 mm



NON-STICK ALUMINIUM
PAN SQUARE GRATED D
3MM.
Ref.710880

260X260 mm



NON-STICK ALUMINIUM
BOWL D 5 MM.
Ref.710883

240X150 mm

PINCH



PINCH
Ref.710878

STARTER KIT ARTICLES

REFERENCES

PINCH	710878
NON STICK ALUMINIUM BOWL	710883
NON-STICK ALUMINIUM TRAY	710884
TEFLON TRAY PLAIN BOTTOM	710755

CE CERTIFICATE

ST - F 21 BLACK V24



DECLARACIÓN UE DE CONFORMIDAD

EU DECLARATION OF CONFORMITY

Directiva(s) del Consejo con la(s) que se declara conformidad:

Council Directive(s) to which conformity is declared:

DC 2014/35/EU + DC 2014/30/EU + DC 2011/65/EU

Aplicación de las Normas:

Application of the Standards:

UNE-EN 60335-1:2012 + AC:2014 + A11:2014 + A13:2017 + A14:2014 + A2:2020 + A1:2020; UNE-EN 60335-2-42:2004 + Corr:2007 + A1:2008 + A11:2012; UNE-EN 55014-1:2017 + A11:2021; UNE-EN 55014-2:2015; UNE-EN 61000-3-2:2014; UNE-EN 61000-3-3:2013 + A1:2020

Fabricante / Manufacturer's
name:

FM CALEFACCIÓN S.L.
CIF: B-14343594

Dirección / Manufacturer's
address:

CTRA. de Rute km.2.700, C.P.:14900, Lucena
Córdoba, España

Tipo de aparato / Type of
device:

HORNO / OVEN

Marca / Trade.:

FM CALEFACCIÓN

Modelo / Model no.:

ST - F 21 BLACK V24

N/S: 24XXXXXXXXXX

Nosotros, los abajo firmantes, declaramos bajo nuestra exclusiva responsabilidad que el equipo especificado cumple con la(s) Directiva(s) y Norma(s) mencionadas

We, the undersigned, hereby declare under our sole responsibility that the specified equipment is in conformity with the above Directive(s) and Standard(s)

Lugar / Place:

Lucena

Firma / Signature: **B-14343594**

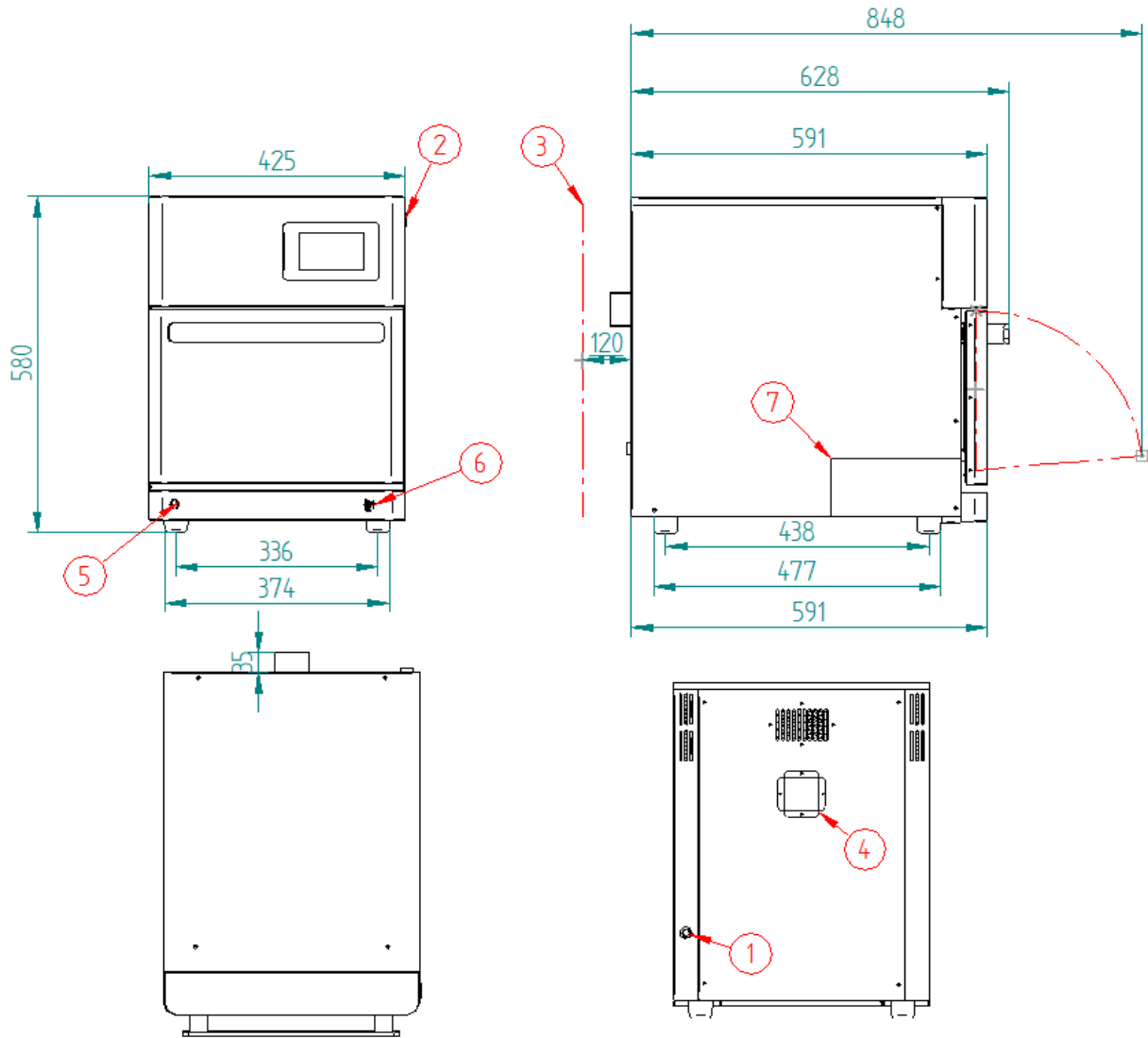
Fecha / Date:

15/01/2024



TECHNICAL CHARACTERISTICS

ST - F 21 BLACK V24



*Dimensions in mm

TECHNICAL CHARACTERISTICS	
Net weight (only oven)	
Gross weight (oven + packaging)	
Supply voltage	230Vac - single phase
Frequency	50Hz
Power cable	Hose 1F+N+T 4mm2
Sound pressure level	Below to 70dB
Total power	3.750W
Convection power	2.200W
Microwave power	1.000W

CONNECTIONS	
1	Hose connection
2	On/off button
3	Safety gap ≥ 120mm
4	Hot fumes outlet Ø12mm
5	Safety thermostat reset
6	USB/HACCP Connection
7	Nameplate