

# ULTRA-FAST COOKING OVEN (CONVECTION + MICROWAVE)

## ST - F 22 V24

Ref: 710867



### TECHNICAL CHARACTERISTICS

Internal dimensions	(W)320 x (D)310 x (H)190 mm
External dimensions	(W)425 x (D)630 x (H)580 mm
Total power	6.000 W
Convection power	2.200 W
Microwave power	2.000 W
Maximum temperature	275 °C
Weight	85 Kg
Voltage	400 V - 50/60 Hz
Connection	Three phase 3F+N+T



### DESCRIPTION

Ultra-fast cooking oven (convection + microwave) with capacity for up to **1 tray of 300x300 size**, designed to guarantee shorter cooking times than conventional ovens. It has a high-resolution touch panel that will allow you to control all aspects of the oven quickly, intuitively and easily. With its wifi connectivity you can control any aspect of the oven remotely from anywhere with an internet connection.

### CAPACITY

• 1 x 300x300 mm tray



### STANDARD EQUIPMENT

- High resolution touch panel
- Cyclonic cooling system
- Integrated catalytic converter
- Integrated Wifi connection
- High thermal insulation
- Integrated USB port
- HACCP data download capability
- Cloud connectivity
- Average power consumption in maintenance mode 0,9 kWh

### FEATURES

- **CONVECTION MODE:** in this mode, only the heating element of the appliance will be activated to cook the food.
- **CONVECTION + MICROWAVE MODE:** in this mode, the microwaves are activated together with the heating element of the appliance.
- **MAINTENANCE MODE:** allows you to keep the inside of the oven chamber always at the right temperature before starting the desired recipe.
- **COOLING:** allows you to cool the inside of the oven chamber more efficiently.
- **RECIPEBOOK:** with its integrated recipe book, you can store up to 300 recipes with up to 9 different phases each.
- **MESSAGES AND NOTIFICATIONS:** possibility of sending messages and notifications to the oven screen from an external device.
- **GEOLOCATION:** you will be able to geolocate the oven thanks to its connectivity with Connecty.Cloud.

### INCLUDED ACCESORIES

- **PADDLE ST-F 21/22** – Ref. 710746



- **INOX TRAY** - Ref. 710749



- **TEFLON TRAY PERFORATED BOTTOM** - Ref. 710754



### CERTIFICATE



# OPTIONALS ACCESORIES

## ST - F 22 V24



### STANDS



ST-F 21/22  
Ref.710747

(W)430x(D)625x(H)950mm

### UPPER ACCESSORY



ST-F 21/22  
Ref.710931

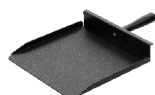
(W)425x(D)520x(H)55mm



ST-F 21/22 BLACK  
Ref.710932

(W)425x(D)520x(H)55mm

### TRAYS



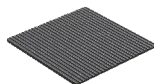
NON-STICK ALUMINIUM  
PADDLE  
Ref.710885

425X295 mm



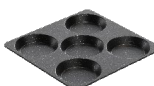
TEFLON TRAY PLAIN  
BOTTOM  
Ref.710755

265X265 mm



NON-STICK ALUMINIUM  
TRAY  
Ref.710884

310X295 mm



5 EGGS TRAY  
Ref.710882

280X290 mm

### REINFORCED TRAYS



TEFLON TRAY  
REINFORCED PLAIN  
Ref.710945

270X270 mm



TEFLON TRAY  
REINFORCED  
PERFORATED  
Ref.710946

270X270 mm

### STARTERT KIT



### ADHESIVE TEFLONS



ST-F 21/22  
Ref.710886

Adhesive Teflon Oven Liners ST  
Fast

### VENTILATION DUCT



ST-F 21/22  
Ref.710934

(W)425x(D)40x(H)150mm



ST-F 21/22 BLACK  
Ref.710935

(W)425x(D)40x(H)150mm

### PANS



NON-STICK ROASTING  
AND BAKING PAN Ø19  
CM  
Ref.710881

190X190 mm



NON-STICK ALUMINIUM  
PAN SQUARE PLAIN D  
3MM.  
Ref.710879

260X260 mm



NON-STICK ALUMINIUM  
PAN SQUARE GRATED D  
3MM.  
Ref.710880

260X260 mm



NON-STICK ALUMINIUM  
BOWL D 5 MM.  
Ref.710883

240X150 mm

### PINCH



PINCH  
Ref.710878

### STARTER KIT ARTICLES

### REFERENCES

PINCH	710878
NON STICK ALUMINIUM BOWL	710883
NON-STICK ALUMINIUM TRAY	710884
TEFLON TRAY PLAIN BOTTOM	710755

# CE CERTIFICATE

## ST - F 22 V24



### **DECLARACIÓN UE DE CONFORMIDAD**

### **EU DECLARATION OF CONFORMITY**

Directiva(s) del Consejo con la(s) que se declara conformidad:

Council Directive(s) to which conformity is declared:

**DC 2014/35/EU + DC 2014/30/EU + DC 2011/65/EU**

Aplicación de las Normas:

Application of the Standards:

**UNE-EN 60335-1:2012 + AC:2014 + A11:2014 + A13:2017 + A14:2014 + A2:2020 + A1:2020; UNE-EN 60335-2-42:2004 + Corr:2007 + A1:2008 + A11:2012; UNE-EN 55014-1:2017 + A11:2021; UNE-EN 55014-2:2015; UNE-EN 61000-3-2:2014; UNE-EN 61000-3-3:2013 + A1:2020**

Fabricante / Manufacturer's  
name:

**FM CALEFACCIÓN S.L.**  
**CIF: B-14343594**

Dirección / Manufacturer's  
address:

**CTRA. de Rute km.2.700, C.P.:14900, Lucena**  
**Córdoba, España**

Tipo de aparato / Type of  
device:

**HORNO / OVEN**

Marca / Trade.:

**FM CALEFACCIÓN**

Modelo / Model no.:

**ST - F 22 V24**

**N/S: 23XXXXXXXXXX**

**Nosotros, los abajo firmantes, declaramos bajo nuestra exclusiva responsabilidad que el equipo especificado cumple con la(s) Directiva(s) y Norma(s) mencionadas**

**We, the undersigned, hereby declare under our sole responsibility that the specified equipment is in conformity with the above Directive(s) and Standard(s)**

Lugar / Place:

**Lucena**

Firma / Signature: **B-14343594**

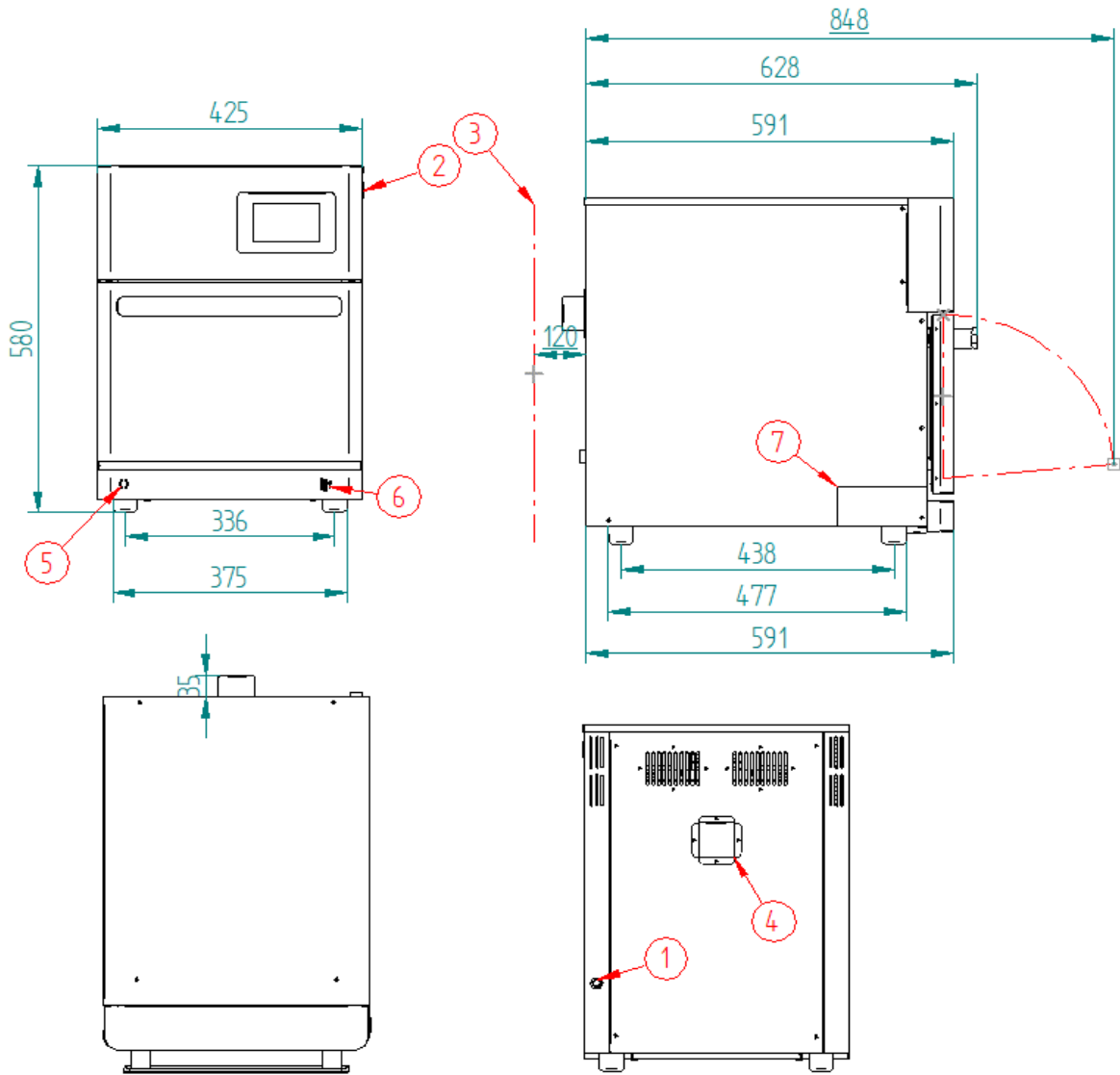
Fecha / Date:

**15/01/2024**



TECHNICAL CHARACTERISTICS

ST - F 22 V24



\*Dimensions in mm

TECHNICAL CHARACTERISTICS

Net weight (only oven)	
Gross weight (oven + packaging)	
Supply voltage	400Vac - Three phase
Frequency	50Hz
Power cable	Hose 3F+N+T 4mm2
Sound pressure level	Below to 70dB
Total power	6.000W
Convection power	2.200W
Microwave power	2.000W

CONNECTIONS

1	Hose connection
2	On/off button
3	Safety gap≥120mm
4	Hot fumes outlet Ø12mm
5	Safety thermostat reset
6	USB/HACCP Connection
7	Nameplate

CONNECTION TYPES

Plug type CETAC 32 A

Magnetothermic type D20A or C25A