

STG 112 V7 GAS

Gastronomy oven




Ref. 710571



- Change door opening: **optional**

EQUIPMENT

- Digital display in control panel system
- End of cycle alarm
- Door switch
- Interior LED light
- 3/4" water connection
- Easy to clean folding glass
- Rotation inverter
- USB port
- Multilevel
- Premix burner system 

FUNCTIONS

- Clima control-humidity regulation
- % step speed control
- Steam control-programmable chimney
- 99 cooking programs
- Connection core/vacuum/multipoint probe
- 3 cooking modes: dry heat, vapour and mixed
- Regeneration/maintain food temperature
- User configurable cooking book with pictures
- Multicook/All on time
- Preheating/cooling

TECHNICAL CHARACTERISTICS

Electric power 650 W

Gas power 28 kW-24080 kcal/h

Maximum temperature Up to 300 °C

Weight 182 Kg

Voltage 230 V-50/60 Hz

Connection Single phase

Internal dimensions (W)620x(D)725x(H)810 mm

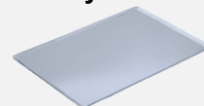
External dimensions (W)790x(D)1220x(H)1110 mm

Automatic washing standard

Removable core probe standard

CAPACITY

11 trays GN2/1
22 trays GN2/1



Longitudinal tray position GN 2/1
Transverse tray position GN 1/1



Distance between trays

67 mm

STG 112 V7 GAS

Specific accessories



Soportes

STG 300 2/1

Ref. 710577



(W)715x(D)600x(H)300 mm

Nº guides - 0

STG 650 2/1

Ref. 710578



(W)715x(D)600x(H)650 mm

Nº guides - 6

STG 850 2/1

Ref. 710579



(W)715x(D)600x(H)850 mm

Nº guides - 8

First installation kit

Ref. 710832 | UNO

Ref. 710835 | DUO



The kit contains:

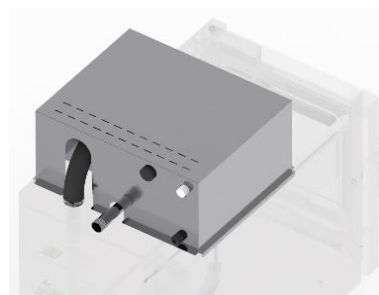
Pipes, connections, adapters and required accessories for the oven installation

1 kg of detergent

1 kg of rinse

Fumes condenser kit

Ref. (ASK DEALER)



(W)417x(D)207x(H)300 mm

Superposition kit

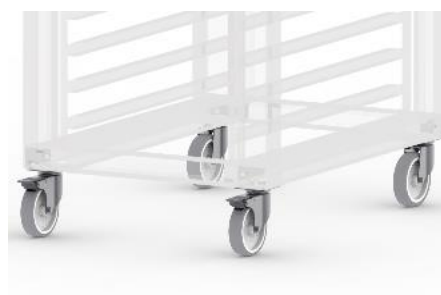
Ref. 710699



(W)788x(D)758x(H)78 mm

Wheels

Ref. 710286



Wheeled option

DECLARACIÓN UE DE CONFORMIDAD EU DECLARATION OF CONFORMITY

Directiva(s) del Consejo con la(s) que se declara conformidad:
Council Directive(s) to which conformity is declared:

DC 2014/35/EU + DC 2014/30/EU + DC 2011/65/EU + Regulation (EU) 2016/426

Aplicación de las Normas:
Application of the Standards:

UNE-EN 60335-1:2012+AC:2014+A11:2014+A13:2017+A14:2014+A2:2020+A1:2020; UNE-EN 60335-2-42:2004+Corr:2007+A1:2008+A11:2012; UNE-EN 55014-1:2017+A11:2021; UNE-EN 55014-2:2015; UNE-EN 61000-3-2:2014; UNE-EN 61000-3-3:2013+A1:2020; UNE-EN 203-1: 2014; UNE-EN 203-2-2:2007; UNE-EN 60335-2-102:2016

Fabricante / *Manufacturer's name:*

**FM CALEFACCIÓN S.L.
CIF: B-14343594**

Dirección / *Manufacturer's address:*

**CTRA. de Rute km.2.700, C.P.:14900, Lucena
Cordoba, Spain**

Tipo de aparato / *Type of device:*

HORNO / OVEN

Marca / *Trade.:*

FM CALEFACCIÓN

Modelo / *Model no.:*

STG 112 V7 GAS N/S: 21XXXXXXXXXX PIN:370DM5880

Nosotros, los abajo firmantes, declaramos bajo nuestra exclusiva responsabilidad que el equipo especificado cumple con la(s) Directiva(s) y Norma(s) mencionadas

We, the undersigned, hereby declare under our sole responsibility that the specified equipment is in conformity with the above Directive(s) and Standard(s)

Lugar / *Place:* **Lucena**

Firma / *Signature:* **B-14343594**

Fecha / *Date:* **01/01/2021**



STG 112 V7 GAS



| TECHNICAL CHARACTERISTICS | | | | CONNECTIONS | |
|------------------------------|--|------------|------------|-------------|----------------------------|
| Empty unit weight | | | | 1 | Hose connection |
| Unit+packaging weight | | | | 2 | Water connection |
| Supply voltage | 230 Vac - single phase | | | 3 | Drain Ø40 mm |
| Frequency | 50/60 Hz | | | 4 | Gas Connection (3/4") |
| Power cable | Hose 1F+N+T 2,5 mm ² (schuko) | | | 5 | Fumes exit Ø50 mm |
| Sound pressure level | Below 70dB | | | 6 | Safety gap ≥ 120 mm |
| Electric power | 650 W | | | 7 | Exhaust pipe Ø50mm |
| | G20 | G25 | G31 | 8 | On/Off button |
| Estimated consumption (m3/h) | 2,96 | 3,45 | 2,18 | 9 | Core Probe Connection |
| Input pressure (mbar) | 20 | 25 | 37 | 10 | USB/HACCP Connection |
| Nominal thermal power (kW) | 28 | 28 | 28 | 11 | Fumes condenser connection |
| | | | | 12 | Safety thermostat reset |
| | | | | 13 | Nameplate |

*Dimensions in mm

*Flue gas outlet adapter Ø100mm included

