

STG 112 V7

Gastronomy oven



Ref. 710570



- Change door opening: **opcional**

FEATURES

- Digital display in control panel system
- End of cycle alarm
- Door switch
- Interior LED light
- 3/4 "water connection
- Easy to clean folding glass
- Rotation inverter
- USB port
- Multilevel

FUNCTIONS

- Clima control-humidity regulation
- % step speed control
- Steam control-programmable chimney
- 99 cooking programs
- Connection core/vacuum/multipoint probe
- 3 cooking modes: dry heat, vapour and mixed
- Regeneration/maintain food temperature
- User configurable cooking book with pictures
- Multicook/All on time
- Preheating/cooling

TECHNICAL CHARACTERISTICS

Electric power 28.500 W

Maximum temperature Up to 300 °C

Weight 178 kg

Voltage 400 V-50/60 Hz

Connection Three phase 3F+N+T

Internal dimensions (W)620x(D)725x(H)810 mm

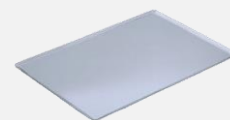
External dimensions (W)790x(D)1220x(H)1090 mm

Automatic washing standard

Removable core probe standard

CAPACITY

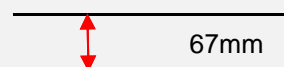
11 trays GN2/1
22 trays GN1/1



Longitudinal tray position GN 2/1
Transversal tray position GN 1/1



Distance between trays



STG 112 V7

Specific accessories



Stands

STG 300 2/1

Ref. 710577



(W)715x(D)925x(H)300 mm

Nº guides - 0

STG 650 2/1

Ref. 710578



(W)715x(D)925x(H)650 mm

Nº guides- 6

STG 850 2/1

Ref. 710579



(W)715x(D)925x(H)850 mm

Nº guides - 8

STG 2/1 Hood

Ref. 710581 | UNO

Ref. 710704 | DUO



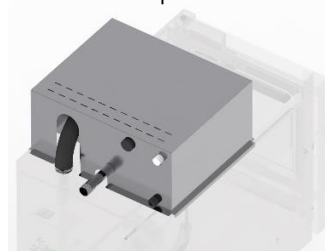
(W)790x(D)1440x(H)300 mm

Smoke output connection Ø120 mm

STG 2/1 Fumes condenser kit

Ref. 710584 | UNO

Ref. 710716 | DUO



(W)417x(D)207x(H)300 mm

Superposition kit

Ref. 710586



(W)788x(D)758x(H)78 mm

First installation kit

Ref. 710832 | UNO

Ref. 710835 | DUO



The kit contains

Pipes, connections, adapters and required accessories for the oven installation

1 kg of detergent

1 kg of rinse

Wheels

Ref. 710286



Wheeled option

DECLARACIÓN UE DE CONFORMIDAD EU DECLARATION OF CONFORMITY

Directiva(s) del Consejo con la(s) que se declara conformidad:

Council Directive(s) to which conformity is declared:

DC 2014/35/EU + DC 2014/30/EU + DC 2011/65/EU

Aplicación de las Normas:

Application of the Standards:

UNE-EN 60335-1:2012 + AC:2014 + A11:2014 + A13:2017 + A14:2014 + A2:2020 + A1:2020; UNE-EN 60335-2-42:2004 + Corr:2007 + A1:2008 + A11:2012; UNE-EN 55014-1:2017 + A11:2021; UNE-EN 55014-2:2015; UNE-EN 61000-3-2:2014; UNE-EN 61000-3-3:2013 + A1:2020

Fabricante / *Manufacturer's name:*

**FM CALEFACCIÓN S.L.
CIF: B-14343594**

Dirección / *Manufacturer's address:*

**CTRA. de Rute km.2.700, C.P.:14900, Lucena
Cordoba, Spain**

Tipo de aparato / *Type of device:*

HORNO / OVEN

Marca / *Trade.:*

FM CALEFACCIÓN

Modelo / *Model no.:*

STG 112 V7

N/S: 21XXXXXXXXXX

Nosotros, los abajo firmantes, declaramos bajo nuestra exclusiva responsabilidad que el equipo especificado cumple con la(s) Directiva(s) y Norma(s) mencionadas

We, the undersigned, hereby declare under our sole responsibility that the specified equipment is in conformity with the above Directive(s) and Standard(s)

Lugar / *Place:* **Lucena**

Firma / *Signature:* **B-14343594**

Fecha / *Date:* **01/01/2021**



STG 112 V7



| TECHNICAL CHARACTERISTICS | | CONNECTIONS | |
|---------------------------|-------------------------------|-------------|----------------------------|
| Empty unit weight | | 1 | Hose connection |
| Unit+packaging weight | | 2 | Hood connection |
| Supply voltage | 400 Vac - three phase | 3 | Fumes condenser connection |
| Frequency | 50/60 Hz | 4 | Water connection |
| Power cable | Hose 3F+N+T 6 mm ² | 5 | Drain Ø40 mm |
| Sound pressure level | Below 70 dB | 6 | Safety gap ≥120 mm |
| Total power | 28500 W | 7 | Fumes exit Ø50 mm |
| Thermal power | 27000 W | 8 | Safety thermostat reset |
| | | 9 | Core probe connection |
| | | 10 | On/Off button |
| | | 11 | USB/HACCP connection |
| | | 12 | Nameplate |

*Dimensions mm

