

STG 72 V7 GAS

Gastronomy oven




Ref. 710569



- Change door opening: **optional**

EQUIPMENT

- Digital display in control panel system
- End of cycle alarm
- Door switch
- Interior LED light
- 3/4" water connection
- Easy to clean folding glass
- Rotation inverter
- USB port
- Multilevel
- Premix burner system 

FUNCTIONS

- Clima control-humidity regulation
- % step speed control
- Steam control-programmable chimney
- 99 cooking programs
- Connection core/vacuum/multipoint probe
- 3 cooking modes: dry heat, vapour and mixed
- Regeneration/maintain food temperature
- User configurable cooking book with pictures
- Multicook/All on time
- Preheating/cooling

TECHNICAL CHARACTERISTICS

Electric power 650 W

Gas power 20 kW-17200 kcal/h

Maximum temperature Up to 300 °C

Weight 145 Kg

Voltage 230 V-50/60 Hz

Connection Single phase

Internal dimensions (W)620x(D)725x(H)545 mm

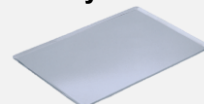
External dimensions (W)790x(D)1220x(H)840 mm

Automatic washing standard

Removable core probe standard

CAPACITY

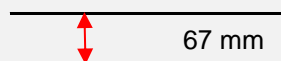
7 trays GN2/1
14 trays GN1/1



Longitudinal tray position GN 2/1
Transversal tray position GN 1/1



Distance between trays



STG 72 V7 GAS

Specific accessories



Stands

STG 300 2/1

Ref. 710577



(W)715x(D)600x(H)300 mm

Nº guides - 0

STG 650 2/1

Ref. 710578



(W)715x(D)600x(H)650 mm

Nº guides- 6

STG 850 2/1

Ref. 710579



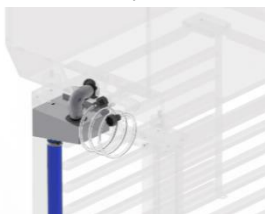
(W)715x(D)600x(H)850 mm

Nº guides - 8

First installation kit

Ref. 710832 | UNO

Ref. 710835 | DUO



The kit contains:

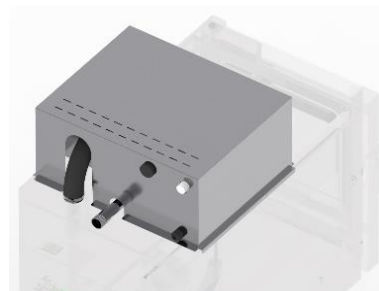
Pipes, connections, adapters and required accesories for the oven installation

1 kg of detergent

1 kg of rinse

Fumes condenser kit

Ref. (ASK DEALER)



(An)417x(F)207x(Al)300 mm

Superposition kit

Ref. 710699



(W)788x(D)758x(H)78 mm

Wheels

Ref. 710286



Wheeled option

STG 72 V7 GAS



DECLARACIÓN EU DE CONFORMIDAD UE DECLARATION OF CONFORMITY

Directiva(s) del Consejo con la(s) que se declara conformidad:
Council Directive(s) to which conformity is declared:

DC 2014/35/EU + DC 2014/30/EU + DC 2011/65/EU + Regulation (EU) 2016/426

Aplicación de las Normas:
Application of the Standards:

UNE-EN 60335-1:2012+AC:2014+A11:2014+A13:2017+A14:2014+A2:2020+A1:2020; UNE-EN 60335-2-42:2004+Corr:2007+A1:2008+A11:2012; UNE-EN 55014-1:2017+A11:2021; UNE-EN 55014-2:2015; UNE-EN 61000-3-2:2014; UNE-EN 61000-3-3:2013+A1:2020; UNE-EN 203-1: 2014; UNE-EN 203-2-2:2007; UNE-EN 60335-2-102:2016

Fabricante / *Manufacturer's name:*

**FM CALEFACCIÓN S.L.
CIF: B-14343594**

Dirección / *Manufacturer's address:*

**CTRA. de Rute km.2.700, C.P.:14900, Lucena
Cordoba, Spain**

Tipo de aparato / *Type of device:*

HORNO / OVEN

Marca / *Trade.:*

FM CALEFACCIÓN

Modelo / *Model no.:*

STG 72 V7 GAS N/S: 21XXXXXXXXXX PIN:370DM5880

Nosotros, los abajo firmantes, declaramos bajo nuestra exclusiva responsabilidad que el equipo especificado cumple con la(s) Directiva(s) y Norma(s) mencionadas

We, the undersigned, hereby declare under our sole responsibility that the specified equipment is in conformity with the above Directive(s) and Standard(s)

Lugar / *Place:* **Lucena**

Firma / *Signature:* **B-14343594**

Fecha / *Date:* **01/01/2021**



STG 72 V7 GAS



TECHNICAL CHARACTERISTICS				CONNECTIONS	
Empty unit weight				1	Hose connection
Unit+packaging weight				2	Water connection
Supply voltage	230 Vac - single phase			3	Drain Ø40 mm
Frequency	50/60 Hz			4	Gas Connection (3/4")
Power cable	Hose 1F+N+T 2,5 mm ² (schuko)			5	Fumes exit Ø50 mm
Sound pressure level	Below 70dB			6	Safety gap ≥ 120 mm
Electric power	650 W			7	Exhaust pipe Ø50mm
	G20	G25	G31	8	On/Off button
Consumo estimado (m3/h)	2,12	2,46	1,55	9	Core Probe Connection
Presión entrada (mbar)	20	25	37	10	USB/HACCP Connection
Potencia térmica nominal (kW)	20	20	20	11	Fumes condenser connection
*Dimensions in mm *Flue gas outlet adapter ø100mm included				12	Safety thermostat reset
				13	Nameplate

