

STG 201 V7 T PLUS

Gastronomy oven



Ref. 710903



- Change door opening

FEATURES

- Digital display in control panel system
- End of cycle alarm
- Door switch
- Interior LED light
- 3/4" water connection
- Easy to clean folding glass
- Rotation inverter
- USB port
- Multilevel

FUNCTIONS

- Clima control-humidity regulation
- % step speed control
- Steam control-programmable chimney
- 99 cooking programs
- Connection core/vacuum/multipoint probe
- 3 cooking modes: dry heat, vapour and mixed
- Regeneration/maintain food temperature
- User configurable cooking book with pictures
- Multicook/All on time
- Preheating/cooling

TECHNICAL CHARACTERISTICS

Electric power 36.250 W

Maximum temperature 300 °C

Weight 260 kg

Voltage 400 V-50/60 Hz

Connection Three phase 3F+N+T

Internal dimensions (W)700x(D)500x(H)1480 mm

External dimensions (W)880x(D)915x(H)1865 mm

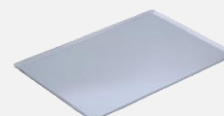
Automatic washing standard

Removable core probe standard

Trolley standard

CAPACITY

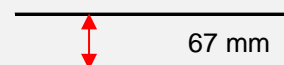
20 trays GN1/1



Transverse tray position



Distance between trays



STG 201 V7 T PLUS

Specific accessories



STG 201 Hood

Ref. 710582

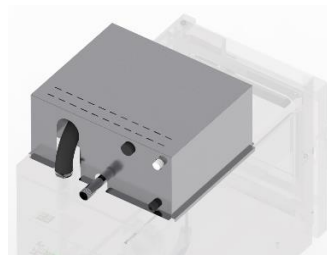


(W)790x(D)1010x(H)300 mm

Smoke output connection Ø120 mm

STG 2/1 Fumes condenser kit

Ref. (ASK DEALER)



(W)417x(D)207x(H)300 mm

First installation kit

Ref. 710832 | UNO



The kit contains

Pipes, connections, adapters and required accessories for the oven installation

1 kg of detergent

1 kg of rinse

DECLARACIÓN UE DE CONFORMIDAD EU DECLARATION OF CONFORMITY

Directiva(s) del Consejo con la(s) que se declara conformidad:
Council Directive(s) to which conformity is declared:

DC 2014/35/EU + DC 2014/30/EU + DC 2011/65/EU

Aplicación de las Normas:
Application of the Standards:

UNE-EN 60335-1:2012 + AC:2014 + A11:2014 + A13:2017 + A14:2014 + A2:2020 + A1:2020; UNE-EN 60335-2-42:2004 + Corr:2007 + A1:2008 + A11:2012; UNE-EN 55014-1:2017 + A11:2021; UNE-EN 55014-2:2015; UNE-EN 61000-3-2:2014; UNE-EN 61000-3-3:2013 + A1:2020

Fabricante / *Manufacturer's name:*

**FM CALEFACCIÓN S.L.
CIF: B-14343594**

Dirección / *Manufacturer's address:*

**CTRA. de Rute km.2.700, C.P.:14900, Lucena
Cordoba, Spain**

Tipo de aparato/ *Type of device:*

HORNO / OVEN

Marca / *Trade.:*

FM CALEFACCIÓN

Modelo / *Model no.:*

STG 201 V7 T PLUS N/S: 24XXXXXXXXXX

Nosotros, los abajo firmantes, declaramos bajo nuestra exclusiva responsabilidad que el equipo especificado cumple con la(s) Directiva(s) y Norma(s) mencionadas

We, the undersigned, hereby declare under our sole responsibility that the specified equipment is in conformity with the above Directive(s) and Standard(s)

Lugar / *Place:* **Lucena**

Firma / *Signature:* **B-14785315**

Fecha / *Date:* **01/01/2024**



STG 201 V7 T PLUS



TECHNICAL CHARACTERISTICS		CONNECTIONS	
Empty unit weight		1	Hose connection
Unit+packaging weight		2	Hood connection
Supply voltage	400 Vac - three phase	3	Fumes condenser connection
Frequency	50/60 Hz	4	Water connection
Power cable	Hose 3F+N+T 10 mm ²	5	Drain Ø40 mm
Soung pressure level	Below 70 dB	6	Safety gap ≥ 120 mm
Total power	36.250 W	7	Fumes exit Ø50 mm
Thermal power	35.000 W	8	Safety thermostat reset
		9	Core probe connection
		10	On/Off button
		11	USB/HACCP connection
		12	Nameplate

*Dimensions in mm

