

# STG 201 ET

*Gastronomy oven*



Ref. 710565



## FEATURES

- Digital display and encoder
- Rotation inverter
- End of cycle alarm
- Door switch
- Safety thermostat
- Interior LED light
- 3/4 "water connection
- Two speed engine
- Direct vaporization push button
- Easy to clean folding glass

## FUNCTIONS

- 0 to 100% humidity regulation
- 0-120 minute timer
- Non-stop mode
- Available with gastronorm GN trays
- Chimney manual control

## TECHNICAL CHARACTERISTICS

**Electric power** 26.250 W

**Maximum temperature** 250 °C

**Weight** 252 kg

**Voltage** 400V-50/60 Hz

**Connection** Three phase 3F+N+T

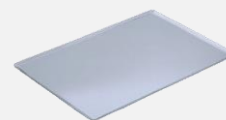
**Internal dimensions** (W)700x(D)500x(H)1480 mm

**External dimensions** (W)880x(D)915x(H)1865 mm

**Trolley** standard

## CAPACITY

20 trays GN1/1



Transverse tray position



Distance between trays



# STG 201 ET

*Specific accessories*



## STG 201 Hood

Ref. 710582

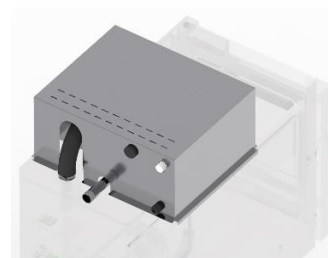


(W)790x(D)1010x(H)300 mm

Smoke output connection Ø120 mm

## STG 201 Fumes condenser kit

Ref. 710584



## First installation kit

Ref. 710832 | UNO



### The kit contains:

Pipes, connections, adapters and required accessories for the oven installation

1 kg of detergent

1 kg of rinse

## DECLARACIÓN UE DE CONFORMIDAD EU DECLARATION OF CONFORMITY

Directiva(s) del Consejo con la(s) que se declara conformidad:

*Council Directive(s) to which conformity is declared:*

**DC 2014/35/EU + DC 2014/30/EU + DC 2011/65/EU**

Aplicación de las Normas:

*Application of the Standards:*

**UNE-EN 60335-1:2012 + AC:2014 + A11:2014 + A13:2017 + A14:2014 + A2:2020 + A1:2020; UNE-EN 60335-2-42:2004 + Corr:2007 + A1:2008 + A11:2012; UNE-EN 55014-1:2017 + A11:2021; UNE-EN 55014-2:2015; UNE-EN 61000-3-2:2014; UNE-EN 61000-3-3:2013 + A1:2020**

Fabricante / *Manufacturer's name:*

**FM CALEFACCIÓN S.L.  
CIF: B-14343594**

Dirección / *Manufacturer's name:*

**CTRA. de Rute km.2.700, C.P.:14900, Lucena  
Cordoba, Spain**

Tipo de aparato / *Type of device:*

**HORNO / OVEN**

Marca / *Trade.:*

**FM CALEFACCIÓN**

Modelo / *Model no.:*

**STC 201 ET**

**N/S: 21XXXXXXXXXX**

**Nosotros, los abajo firmantes, declaramos bajo nuestra exclusiva responsabilidad que el equipo especificado cumple con la(s) Directiva(s) y Norma(s) mencionadas**

***We, the undersigned, hereby declare under our sole responsibility that the specified equipment is in conformity with the above Directive(s) and Standard(s)***

Lugar / *Place:* **Lucena**

Firma / *Signature:* **B-14343594**

Fecha / *Date:* **01/01/2021**



# STC 201 ET



TECHNICAL CHARACTERISTICS		CONNECTIONS	
Empty unit weight		1	Hose connection
Unit+packaging weight		2	Hood connection
Supply voltage	400 Vac - three phase	3	Fumes condenser connection
Frequency	50/60 Hz	4	Water connection
Power cable	Hose 3F+N+T 6 mm <sup>2</sup>	5	Drain Ø40 mm
Sound pressure level	Below 70 dB	6	On/Off button
Total power	26250 W	7	Safety gap ≥ 120 mm
Thermal power	25000 W	8	Fumes exit Ø50 mm
		9	Safety thermostat reset
		10	Nameplate

\*Dimensions mm

