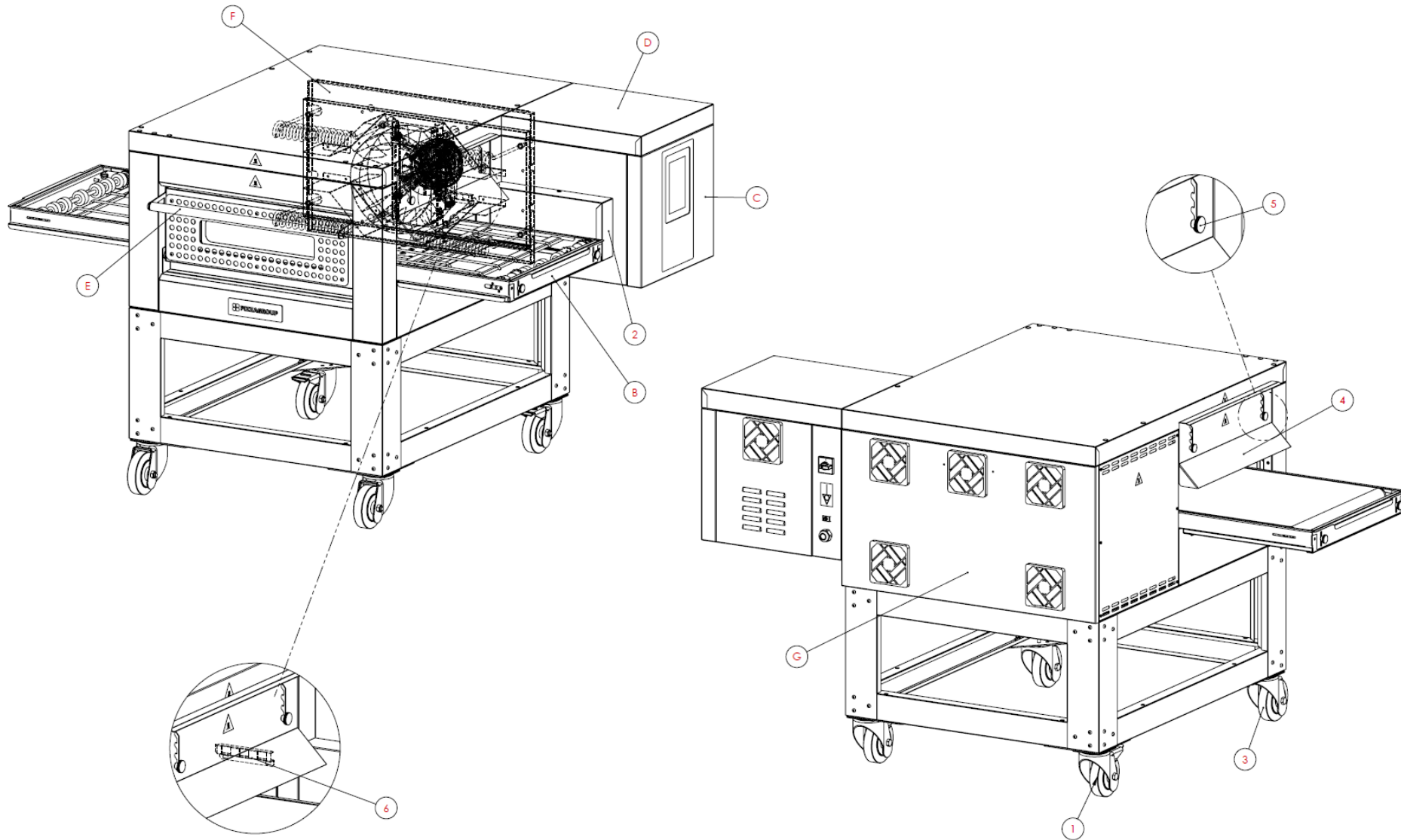
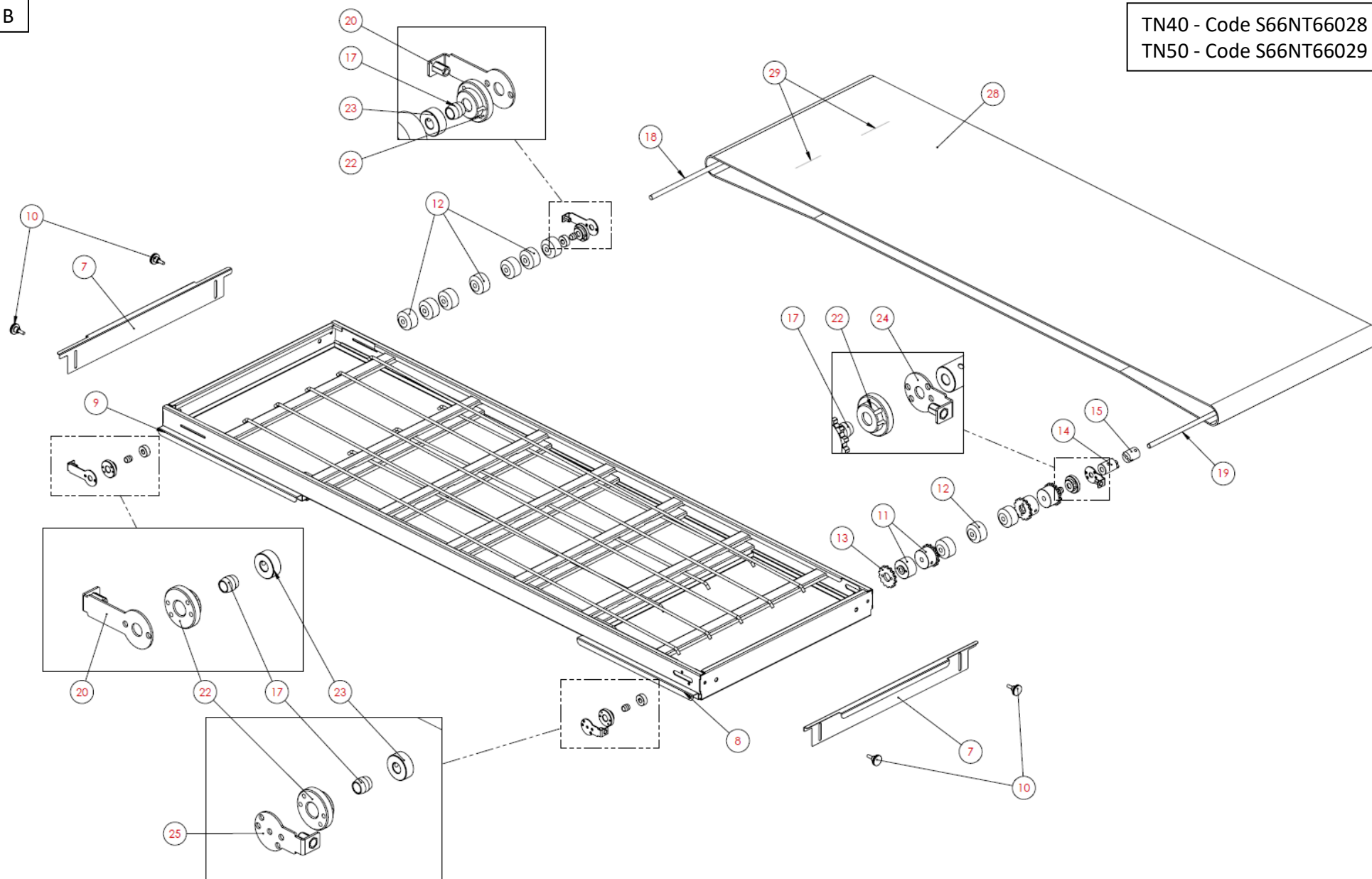


A23FN66002 – ESPLOSO TUNNEL ELETTRICO 2021



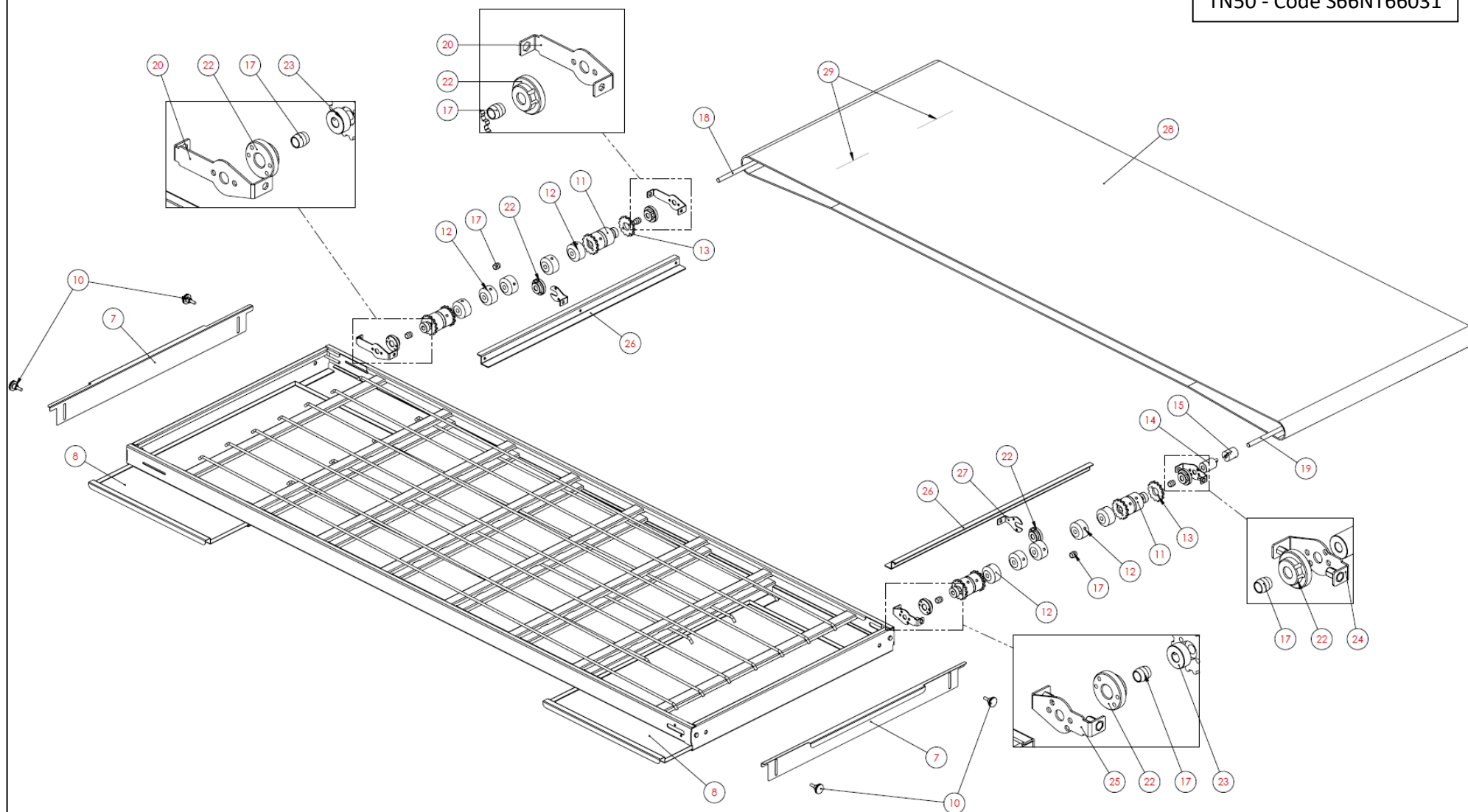
B

TN40 - Code S66NT66028
TN50 - Code S66NT66029

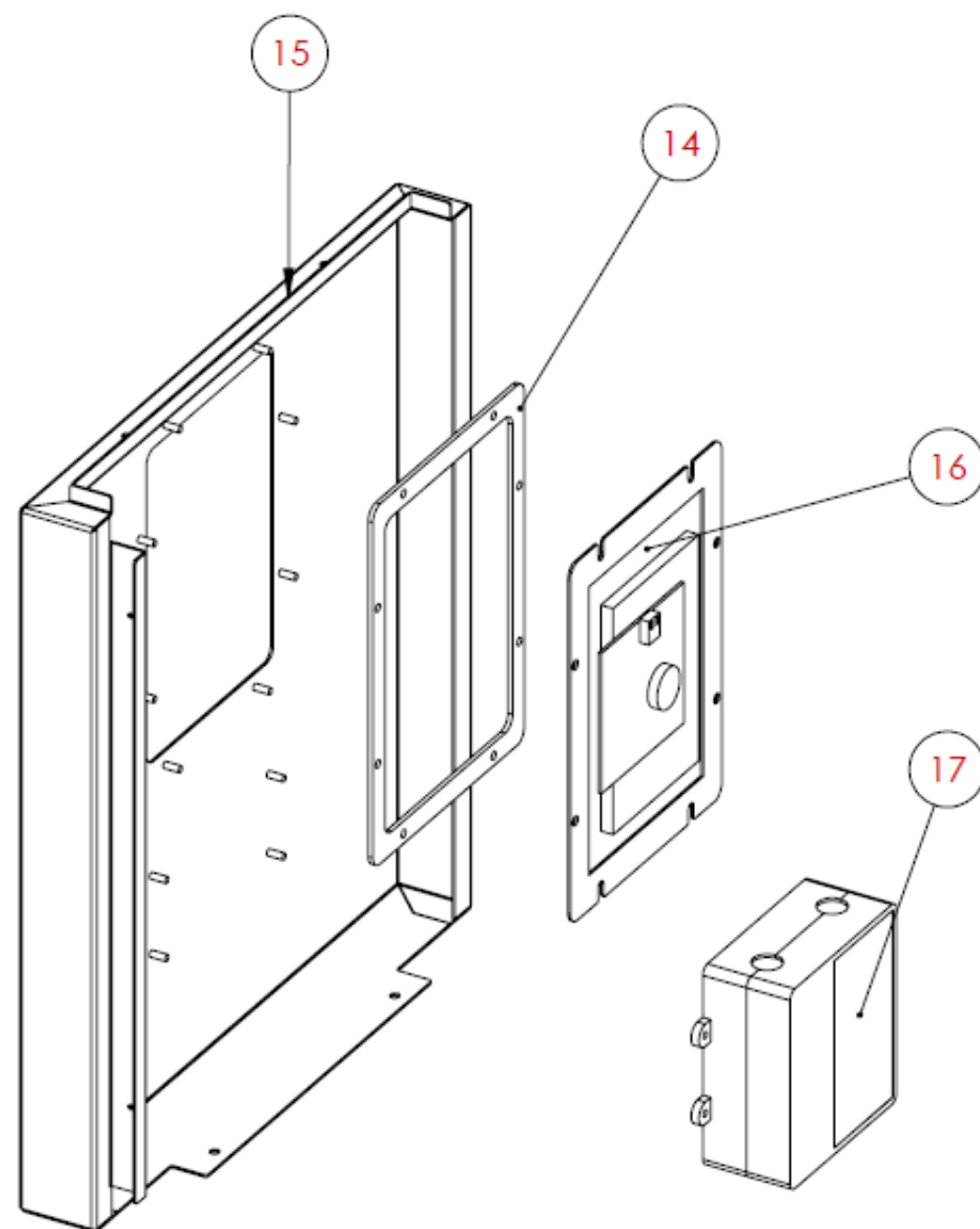


B

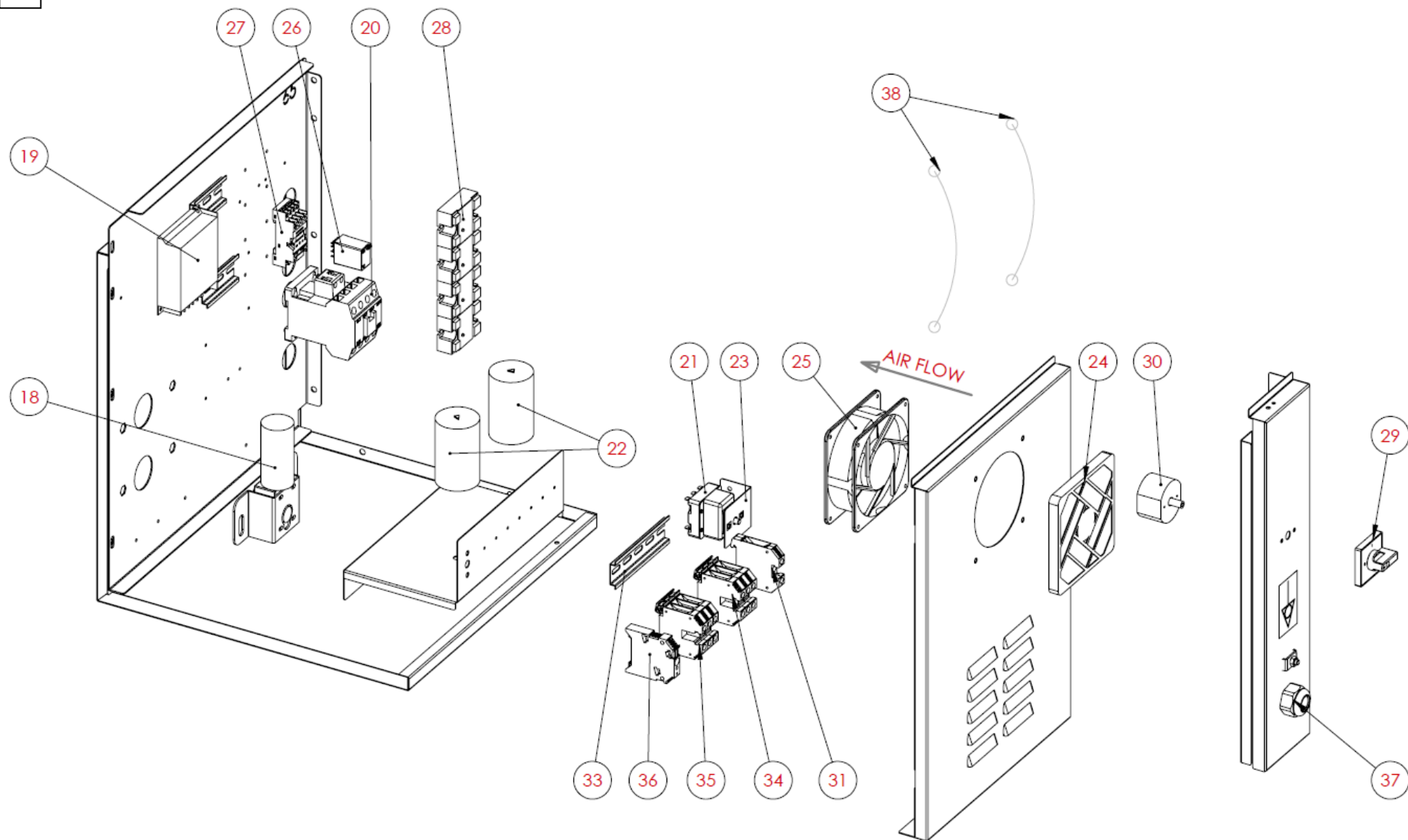
TN40 - Code S66NT66030
TN50 - Code S66NT66031



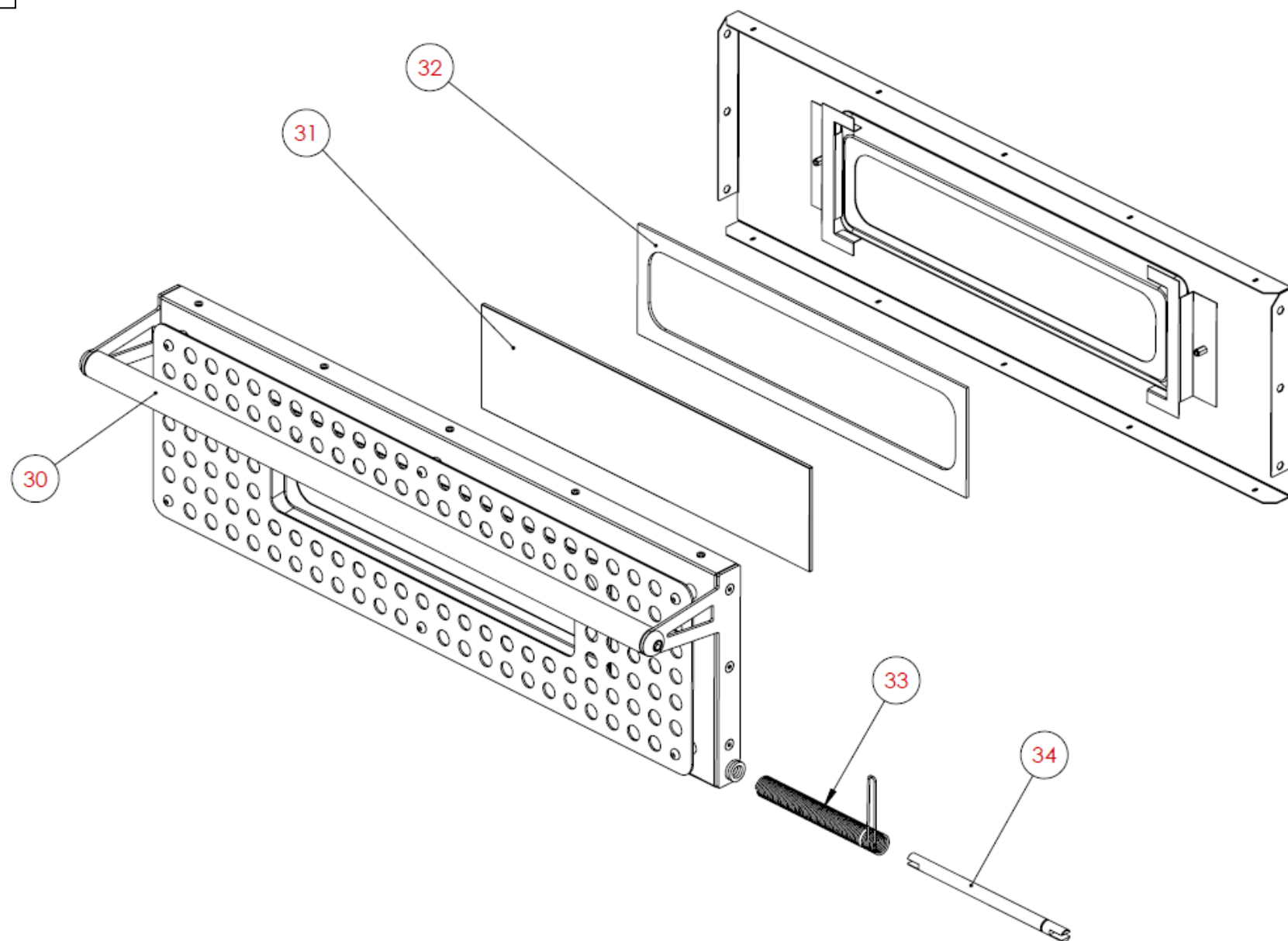
c



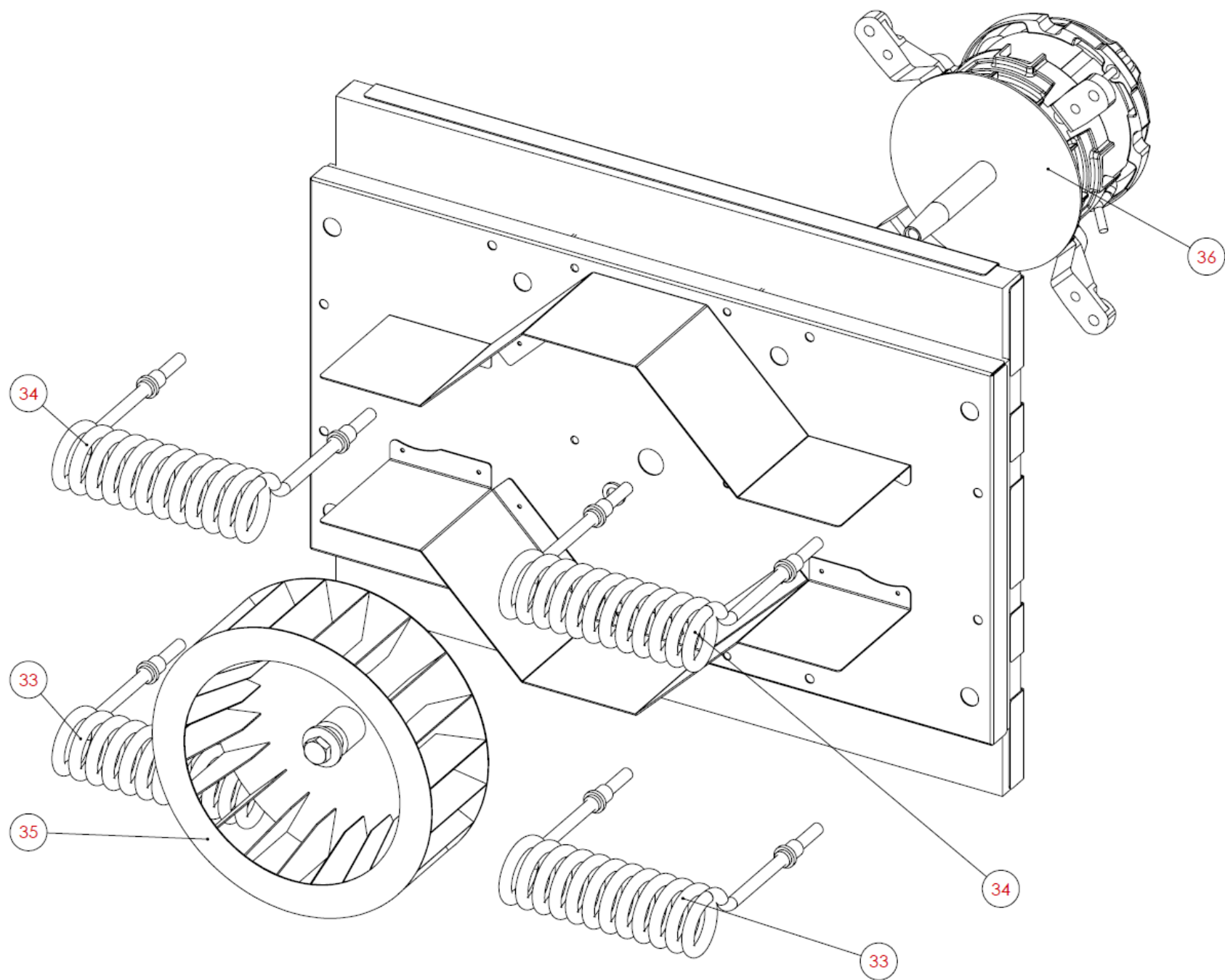
D



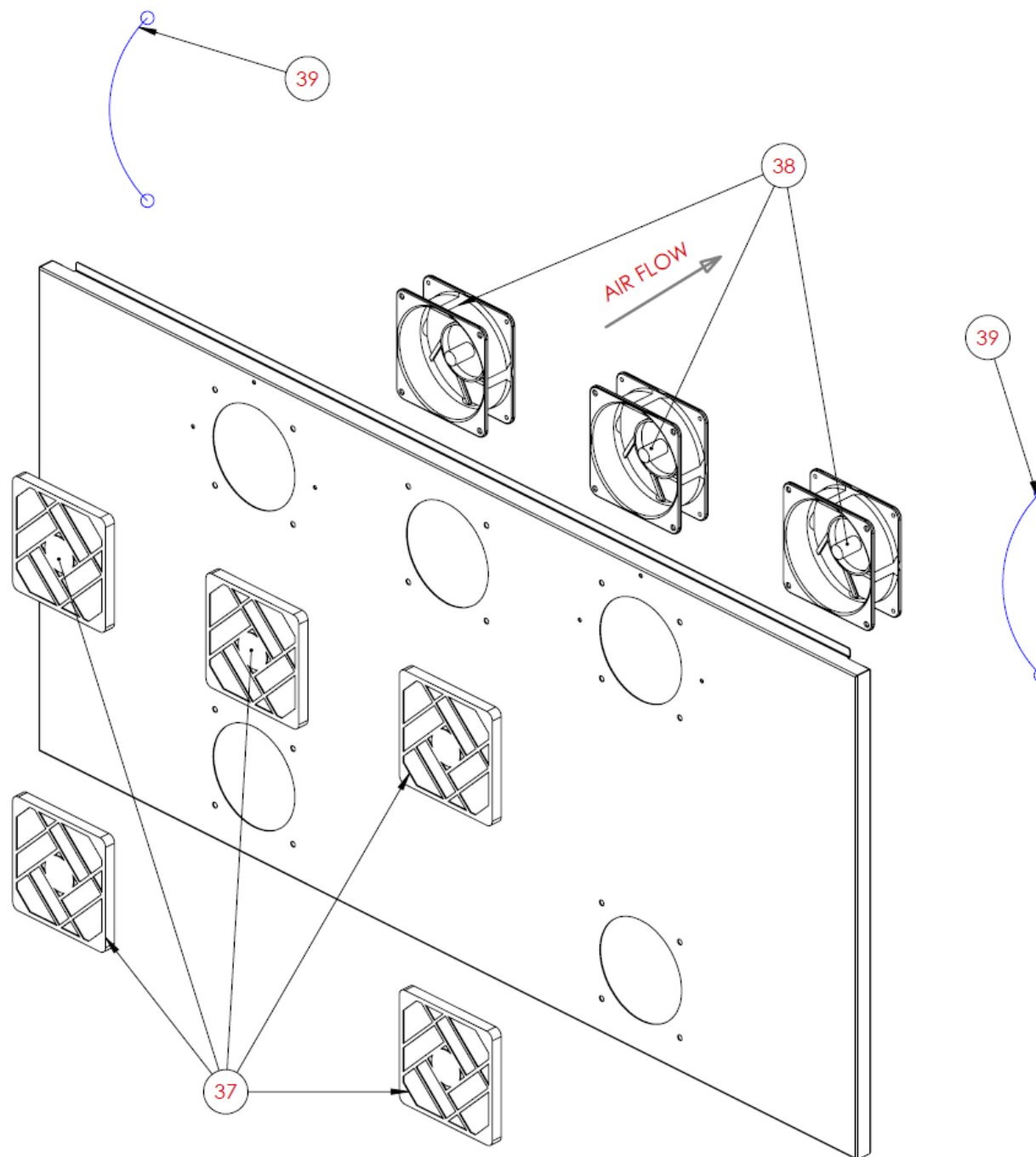
E



F



G



Data	Cod. esploso	FORNO TUNNEL VENTILATO ELETTRICO TOUCH					TN40 P09TN12024	TN50 P09TN12018	TN65 P09TN12019	TN80 P09TN12020
30/07/2021	A23FN66002									
Assieme	Pos.	Codice	Descrizione	Description EN	Description FR	Description DE	Q.tà	Q.tà	Q.tà	Q.tà
//	1	A90RX89010	RUOTA SENZA FRENO	WHEEL WITHOUT BRAKE	ROUE SANS FREIN	RAD OHNE BREMSE	2	2	2	2
	2	S33MR66003	CARTER MOTORE	CRANCASE MOTOR	CARTER MOTEUR	MOTORKURBELGEHÄUSE	1	-	-	-
		S33MR66005					-	1	-	-
		S33MR66001					-	-	1	
		S33MR66007					-	-	-	1
	3	A90RX89009	RUOTA CON FRENO	WHEEL WITH BRAKE	ROUE AVEC FREIN	RAD MIT BREMSE	2	2	2	2
	4	S41CH66018	CAPPETTA REMOVIBILE	REMOVABLE END PLUG	HOTTE AMOVIBLE	ABNEHMBARE ABDECKUNG	2	-	-	-
		S41CH66020	CAPPETTA REMOVIBILE	REMOVABLE END PLUG	HOTTE AMOVIBLE	ABNEHMBARE ABDECKUNG	-	2	-	-
		S41CH66022	CAPPETTA REMOVIBILE	REMOVABLE END PLUG	HOTTE AMOVIBLE	ABNEHMBARE ABDECKUNG	-	-	2	
		S41CH66024	CAPPETTA REMOVIBILE	REMOVABLE END PLUG	HOTTE AMOVIBLE	ABNEHMBARE ABDECKUNG	-	-	-	2
	5	A99FS66001	POMELLO	KNOB	MANETTE	KNAUF	4	4	4	4
	6	S50ST66047	STAFFA TERMOSTATO	THERMOSTAT BRACKET	ÉTRIER DE THERMOSTAT	THERMOSTATHALTERUNG	1	1	1	1
B		S66NT66028	ASSIEME NASTRO COMPLETO	COMPLETE CONVEYOR ENSEMBLE	ENSEMBLE TAPIS COMPLET	VOLLSTÄNDIGE BANDBAUGRUPPE	1	-	-	-
		S66NT66029	ASSIEME NASTRO COMPLETO	COMPLETE CONVEYOR ENSEMBLE	ENSEMBLE TAPIS COMPLET	VOLLSTÄNDIGE BANDBAUGRUPPE	-	1	-	-
		S66NT66030	ASSIEME NASTRO COMPLETO	COMPLETE CONVEYOR ENSEMBLE	ENSEMBLE TAPIS COMPLET	VOLLSTÄNDIGE BANDBAUGRUPPE	-	-	1	
		S66NT66031	ASSIEME NASTRO COMPLETO	COMPLETE CONVEYOR ENSEMBLE	ENSEMBLE TAPIS COMPLET	VOLLSTÄNDIGE BANDBAUGRUPPE	-	-	-	1
C		-	FRONTALE COMANDI	CONTROLS PANEL	PANNEAU DE COMMANDES FRONTAL	FRONTALE STEUERUNGEN	1	1	1	1
D		S72FN66009	IMPIANTO ELETTRICO	ELECTRICAL SYSTEM	CIRCUIT ÉLECTRIQUE	ELEKTRISCHE ANLAGE	1	-	-	-
		S72FN66013	IMPIANTO ELETTRICO	ELECTRICAL SYSTEM	CIRCUIT ÉLECTRIQUE	ELEKTRISCHE ANLAGE	-	1	-	-
		S72FN66011	IMPIANTO ELETTRICO	ELECTRICAL SYSTEM	CIRCUIT ÉLECTRIQUE	ELEKTRISCHE ANLAGE	-	-	1	
		S72FN66014	IMPIANTO ELETTRICO	ELECTRICAL SYSTEM	CIRCUIT ÉLECTRIQUE	ELEKTRISCHE ANLAGE	-	-	-	1
E		S66PT66028	ASSIEME PORTA	DOOR ENSEMBLE	ENSEMBLE PORTE	TÜRBAUGRUPPE	1	-	-	-
		S66PT66026	ASSIEME PORTA	DOOR ENSEMBLE	ENSEMBLE PORTE	TÜRBAUGRUPPE	-	1	-	-
		S66PT66024	ASSIEME PORTA	DOOR ENSEMBLE	ENSEMBLE PORTE	TÜRBAUGRUPPE	-	-	1	
		S66PT66022	ASSIEME PORTA	DOOR ENSEMBLE	ENSEMBLE PORTE	TÜRBAUGRUPPE	-	-	-	1
F		S66MT66003	ASSIEME VENTILAZIONE	VENTILATION ENSEMBLE	ENSEMBLE VENTILATION	LÜFTUNGSBAUGRUPPE	1	-	-	-
		S66MT66002	ASSIEME VENTILAZIONE	VENTILATION ENSEMBLE	ENSEMBLE VENTILATION	LÜFTUNGSBAUGRUPPE	-	1	-	-
		S66MT66001	ASSIEME VENTILAZIONE	VENTILATION ENSEMBLE	ENSEMBLE VENTILATION	LÜFTUNGSBAUGRUPPE	-	-	1	
		S66MT66005	ASSIEME VENTILAZIONE	VENTILATION ENSEMBLE	ENSEMBLE VENTILATION	LÜFTUNGSBAUGRUPPE	-	-	-	1
G		-	PANNELLO POSTERIORE	BACK PANEL	PANNEAU ARRIÈRE	HINTERES PANEEL	1	1	1	1
B	7	S50CH66001	CHIUSURA NASTRO	CONVEYOR CLOSURE	FERMETURE DU TAPIS	BANDSCHLIEßUNG	2	-	-	-
		S29SC66001	CHIUSURA NASTRO	CONVEYOR CLOSURE	FERMETURE DU TAPIS	BANDSCHLIEßUNG	-	2	-	-
		S29SC66003	CHIUSURA NASTRO	CONVEYOR CLOSURE	FERMETURE DU TAPIS	BANDSCHLIEßUNG	-	-	2	
		S29SC66006	CHIUSURA NASTRO	CONVEYOR CLOSURE	FERMETURE DU TAPIS	BANDSCHLIEßUNG	-	-	-	2
	8	S67PB66001	VASSOIO DESTRO	RIGHT TRY	PLATEAU DROIT	WANNE RECHTS	1	-	-	-
		S67PB66005	VASSOIO DESTRO	RIGHT TRY	PLATEAU DROIT	WANNE RECHTS	-	1	-	-
		S67PB66009	VASSOIO DESTRO/SINISTRO	RIGHT/LEFT TRY	PLATEAU DROIT/GAUCHE	WANNE RECHTS/LINKS	-	-	1	
		S67PB66011	VASSOIO DESTRO/SINISTRO	RIGHT/LEFT TRY	PLATEAU DROIT/GAUCHE	WANNE RECHTS/LINKS	-	-	-	1
	9	S67PB66003	VASSOIO SINISTRO	LEFT TRY	PLATEAU GAUCHE	WANNE LINKS	1	-	-	-
		S67PB66007	VASSOIO SINISTRO	LEFT TRY	PLATEAU GAUCHE	WANNE LINKS	-	1	-	-

		S67PB66009	VASSOIO DESTRO/SINISTRO	RIGHT/LEFT TRY	PLATEAU DROIT/GAUCHE	WANNE RECHTS/LINKS	-	-	1	
		S67PB66011	VASSOIO DESTRO/SINISTRO	RIGHT/LEFT TRY	PLATEAU DROIT/GAUCHE	WANNE RECHTS/LINKS	-	-	-	1
	10	A99FS66001	POMELLO	KNOB	MANETTE	KNAUF	4	4	4	4
	11	A75TR66001	RULLO	ROLLER	ROULEAU	ROLLE	4	4	4	4
	12	A75TR66002	RULLO FOLLE	NEEDLE ROLLER	ROULEAU AU POINT MORT	FREILAUFROLLE	10	10	12	16
	13	S74RU66004	RUOTA DENTATA	COGWHEEL	ROUE DENTÉE	ZAHNRAD	4	4	4	4
	14	S64TR66003	BOCCOLA NASTRO	CONVEYOR BUSH	DOUILLE DU TAPIS	BANDBUCHSE	1	1	1	1
	15	S64TR66001	BOCCOLA MOTORIDUTTORE	GEARMOTOR BUSH	DOUILLE MOTORÉDUCTEUR	GETRIEBEMOTORBUCHSE	1	1	1	1
	17	S64RT66002	BRONZINA	BRONZE BUSCHING	PALIER LISSE	GLEITLAGER	4	4	4	6
	18	S63IN66003	TONDINO DI ROTAZIONE	ROTATION ROD	TORON DE ROTATION	ROTATIONSSCHEIBE	1	-	-	-
		S63IN66001	TONDINO DI ROTAZIONE	ROTATION ROD	TORON DE ROTATION	ROTATIONSSCHEIBE	-	1	-	-
		S63IN66002	TONDINO DI ROTAZIONE	ROTATION ROD	TORON DE ROTATION	ROTATIONSSCHEIBE	-	-	1	
		S63IN66004	TONDINO DI ROTAZIONE	ROTATION ROD	TORON DE ROTATION	ROTATIONSSCHEIBE	-	-	-	1
	19	S63RT66006	TONDINO TRAZIONE	TRACTION ROD	TORON DE TRACTION	ZUGSCHEIBE	1	-	-	-
		S63RT66005	TONDINO TRAZIONE	TRACTION ROD	TORON DE TRACTION	ZUGSCHEIBE	-	1	-	-
		S63RT66007	TONDINO TRAZIONE	TRACTION ROD	TORON DE TRACTION	ZUGSCHEIBE	-	-	1	
		S63RT66008	TONDINO TRAZIONE	TRACTION ROD	TORON DE TRACTION	ZUGSCHEIBE	-	-	-	1
	20	S30IN66006	PIASTRINA TENDINASTRO	CONVEYOR TENSIONER	PLAQUETTE TENDEUR DE TAPIS	BANDSPANNPLATTE	2	2	2	2
	22	S64RT66001	BOCCOLA SEDE BRONZINA	BRONZE BUSCHING BASE	DOUILLE DE LOGEMENT DE PALIER LISSE	GLEITLAGERBUCHSE	4	4	4	6
	23	S64AL66001	BOCCOLA FERMA ALBERO	BUSH STOPS ROD	DOUILLE DE FIXATION D'ARBRE	WELLESPERRBUCHSE	3	3	3	3
	24	S30IN66008	PIASTRINA TENDINASTRO DX	RIGHT TENSIONER PLATE	PLAQUETTE TENDEUR DE TAPIS DROITE	BANDSPANNPLATTE RE	1	1	1	1
	25	S30IN66010	PIASTRINA TENDINASTRO SX	LEFT TENSIONER PLATE	PLAQUETTE TENDEUR DE TAPIS GAUCHE	BANDSPANNPLATTE LI	1	1	1	1
	26	S74SP66002	SUPPORTO TIRANTI NASTRO	TIE ROD SUPPORT	SUPPORT DE TIRANTS DE TAPIS	BANDZUGSTANGENHALTERUNG	-	-	2	-
		S74SP66006	SUPPORTO TIRANTI NASTRO	TIE ROD SUPPORT	SUPPORT DE TIRANTS DE TAPIS	BANDZUGSTANGENHALTERUNG	-	-	-	2
	27	S74SP66004	SUPPORTO ALBERO NASTRO	CONVEYOR SHAFT SUPPORT	SUPPORT D'ARBRE DE TAPIS	BANDWELLENHALTERUNG	-	-	2	2
	28	A89NT00008	NASTRO TRASPORTATORE	CONVEYOR BELT	TAPIS ROULANT	FÖRDERBAND	3,20 mt.	-	-	-
		A89NT00005	NASTRO TRASPORTATORE	CONVEYOR BELT	TAPIS ROULANT	FÖRDERBAND	-	3,27 mt.	-	-
		A89NT00006	NASTRO TRASPORTATORE	CONVEYOR BELT	TAPIS ROULANT	FÖRDERBAND	-	-	3,77 mt.	-
		A89NT00007	NASTRO TRASPORTATORE	CONVEYOR BELT	TAPIS ROULANT	FÖRDERBAND	-	-	-	4,15 mt.
	29	A89NT00009	GIUNZIONE NASTRO	CONVEYOR BELT	JONCTION DU TAPIS	BANDANSATZ	2	2	3	5
C	14	A94GU65013	GUARNIZIONE DISPLAY	DISPLAY GASKET	RONDELLE D'ÉTANCHÉITÉ DE L'ÉCRAN	DISPLAY-DICHTUNG	1	1	1	1
	15	S65CI66019	FRONTALE COMANDI	CONTROLS PANEL	PANNEAU DE COMMANDES FRONTAL	FRONTALE STEUERUNGEN	1	-	-	-
		S65CI66015	FRONTALE COMANDI	CONTROLS PANEL	PANNEAU DE COMMANDES FRONTAL	FRONTALE STEUERUNGEN	-	1	-	-
		S65CI66011	FRONTALE COMANDI	CONTROLS PANEL	PANNEAU DE COMMANDES FRONTAL	FRONTALE STEUERUNGEN	-	-	1	
		S65CI66017	FRONTALE COMANDI	CONTROLS PANEL	PANNEAU DE COMMANDES FRONTAL	FRONTALE STEUERUNGEN	-	-	-	1
	16	A88SE00005	DISPLAY 7"	DISPLAY 7"	ÉCRAN 7"	7-ZOLL-DISPLAY	1	1	1	1
D	17	A88SE00007	SCHEDA POTENZA	POWER CARD BOARD	CARTE DE PUISSANCE	LEISTUNGSKARTE	1	1	1	1
	18	S66MT66004	MOTORIDUTTORE	GEARMOTOR	MOTORÉDUCTEUR	GETRIEBEMOTOR	1	1	1	1
	19	A88SE00008	TRASFORMATORE	TRANSFORMER	TRANSFORMATEUR	TRAFO	1	1	1	1
	20	A87AZ69034	TELERUTTORE	CONTACTOR	TÉLÉRUPTEUR	SCHÜTZ	1	1	1	1
	21	A88TX85005	TERMOSTATO DI SICUREZZA	SAFETY THERMOSTAT	THERMOSTAT DE SÉCURITÉ	SICHERHEITSTHERMOSTAT	1	1	1	1
	22	A92VA66002	FILTRO EMC	EMC FILTER	FILTRE EMC	EMV-FILTER	2	2	2	2
	23	S50ST66047	STAFFA TERMOSTATO	THERMOSTAT BRACKET	ÉTRIÉR DE THERMOSTAT	THERMOSTATHALTERUNG	1	1	1	1
	24	A87VN00013	PROTEZIONE VENTOLA	PROTECTION FAN	PROTECTION DE VENTILATEUR	VENTILATORSCHUTZ	1	1	1	1
	25	A87VN00002	VENTOLA	FAN	VENTILATEUR	VENTILATOR	1	1	1	1

	26	A87AZ69032	RELÈ	RELAY	RELAIS	RELAIS	1	1	1	1
	27	A87CX62008	ZOCOLO RELÈ	RELAY SOCKET	SOCLE DE RELAIS	RELAIS-SOCKEL	1	1	1	1
	28	A87AZ69033	SSR	SSR	SSR	SSR	4	4	4	4
	29	A87AZ69011	MASCHERINA INTERRUPTORE	SWITCH PLATE	CACHE-INTERRUPTEUR	SCHALTERMASKE	1	1	1	1
	30	A87AZ69004	INTERRUPTORE GENERALE	MAIN SWITCH	INTERRUPTEUR GÉNÉRAL	HAUPTSCHALTER	1	1	1	1
	31	A87CX62015	MORSETTO GIALLO-VERDE	GREEN-YELLOW CLAMP	BORNE JAUNE-VERTE	GELB-GRÜNE KLEMME	1	1	1	1
	33	S72SB66002	OMEGA L=120mm	BAR L=120mm	OMEGA L=120mm	OMEGA L=120mm	1	1	1	1
	34	A87CX62014	MORSETTO BLU	BLUE CLAMP	BORNE BLEUE	BLAUE KLEMME	4	4	4	4
	35	A87CX62016	MORSETTO BEIGE	BEIGE CLAMP	BORNE BEIGE	BEIGE KLEMME	3	3	3	3
	36	A87CX62019	COPERCHIO MORSETTI	COVER CLAMP	COUVERCLE DE BORNES	KLEMMENDECKEL	1	1	1	1
	37	A86EL46011	PRESSACAVO	CABLE GLAND	PRESSE-CÂBLE	KABELFÜHRUNG	1	1	1	1
		A86EL46012	CONTRODADO	LOCK NUT	CONTRE-ÉCROU	KONTERMUTTER	1	1	1	1
E	38	A87CX63071	CORDINO PER PANNELLI	CORD FOR PANELS	CORDON POUR PANNEAUX	SCHNUR FÜR PANEELE	2	2	2	2
	30	S66MG66004	ASSIEME MANIGLIONE	HANDLE ENSEMBLE	ENSEMBLE POIGNÉE	GRIFFBAUGRUPPE	1	-	-	-
		S66MG66001	ASSIEME MANIGLIONE	HANDLE ENSEMBLE	ENSEMBLE POIGNÉE	GRIFFBAUGRUPPE	-	1	-	-
		S66MG66002	ASSIEME MANIGLIONE	HANDLE ENSEMBLE	ENSEMBLE POIGNÉE	GRIFFBAUGRUPPE	-	-	1	
		S66MG66003	ASSIEME MANIGLIONE	HANDLE ENSEMBLE	ENSEMBLE POIGNÉE	GRIFFBAUGRUPPE	-	-	-	1
	31	A00PT55003	VETRO PORTA	DOOR GLASS	VITRE PORTE	TÜRGLAS	1	1	1	1
	32	A94GU65002	GUARNIZIONE VETRO PORTA	DOOR GLASS GASKET	RONDELLE D'ÉTANCHÉITÉ DE VITRE PORTE	TÜRGLASDICHTUNG	1	1	1	1
	33	A86ME30004	MOLLA PORTA	DOOR SPRING	RESSORT DE PORTE	TÜRFEDER	1	1	1	1
F	34	S69ML55001	PERNO MOLLA	PIN FOR SPRING	PIVOT DE RESSORT	FEDERSTIFT	1	1	1	1
	33	A87RZ65071	RESISTENZA 230V 2200W	HEATING ELEMENT 230V 2200W	RÉSISTANCE 230V 2200W	HEIZELEMENT 230V 2200W	2	-	-	-
		A87RZ65070	RESISTENZA 230V 4100W	HEATING ELEMENT 230V 4100W	RÉSISTANCE 230V 4100W	HEIZELEMENT 230V 4100W	-	2	-	-
		A87RZ65068	RESISTENZA 230V 5400W	HEATING ELEMENT 230V 5400W	RÉSISTANCE 230V 5400W	HEIZELEMENT 230V 5400W	-	-	2	
		A87RZ65073	RESISTENZA 230V 6000W	HEATING ELEMENT 230V 6000W	RÉSISTANCE 230V 6000W	HEIZELEMENT 230V 6000W	-	-	-	2
	34	A87RZ65072	RESISTENZA 230V 1500W	HEATING ELEMENT 230V 1500W	RÉSISTANCE 230V 1500W	HEIZELEMENT 230V 1500W	2	-	-	-
		A87RZ65069	RESISTENZA 230V 2800W	HEATING ELEMENT 230V 2800W	RÉSISTANCE 230V 2800W	HEIZELEMENT 230V 2800W	-	2	-	-
		A87RZ65067	RESISTENZA 230V 3600W	HEATING ELEMENT 230V 3600W	RÉSISTANCE 230V 3600W	HEIZELEMENT 230V 3600W	-	-	2	
		A87RZ65073	RESISTENZA 230V 6000W	HEATING ELEMENT 230V 6000W	RÉSISTANCE 230V 6000W	HEIZELEMENT 230V 6000W	-	-	-	2
	35	A87VN00008	VENTOLA RADIALE	RADIAL FAN	VENTILATEUR RADIAL	RADIALVENTILATOR	1	-	1	1
		A87VN00009	VENTOLA RADIALE	RADIAL FAN	VENTILATEUR RADIAL	RADIALVENTILATOR		1		
	36	A87MR55034	MOTORE	MOTOR	MOTEUR	MOTOR	1	1	-	-
		A87MR55033	MOTORE	MOTOR	MOTEUR	MOTOR	-	-	1	1
G	37	A87VN00013	PROTEZIONE VENTOLA	PROTECTION FAN	PROTECTION DE VENTILATEUR	VENTILATORSCHUTZ	2	3	3	3
	38	A87VN00002	VENTOLA	FAN	VENTILATEUR	VENTILATOR	2	3	3	3
	39	A87CX63071	CAVO FERMA PANNELLI	CABLE STOPS PANELS	CÂBLE DE FIXATION DE PANNEAUX	PANEELHALTESEIL	2	2	2	2