

SS/SK 25

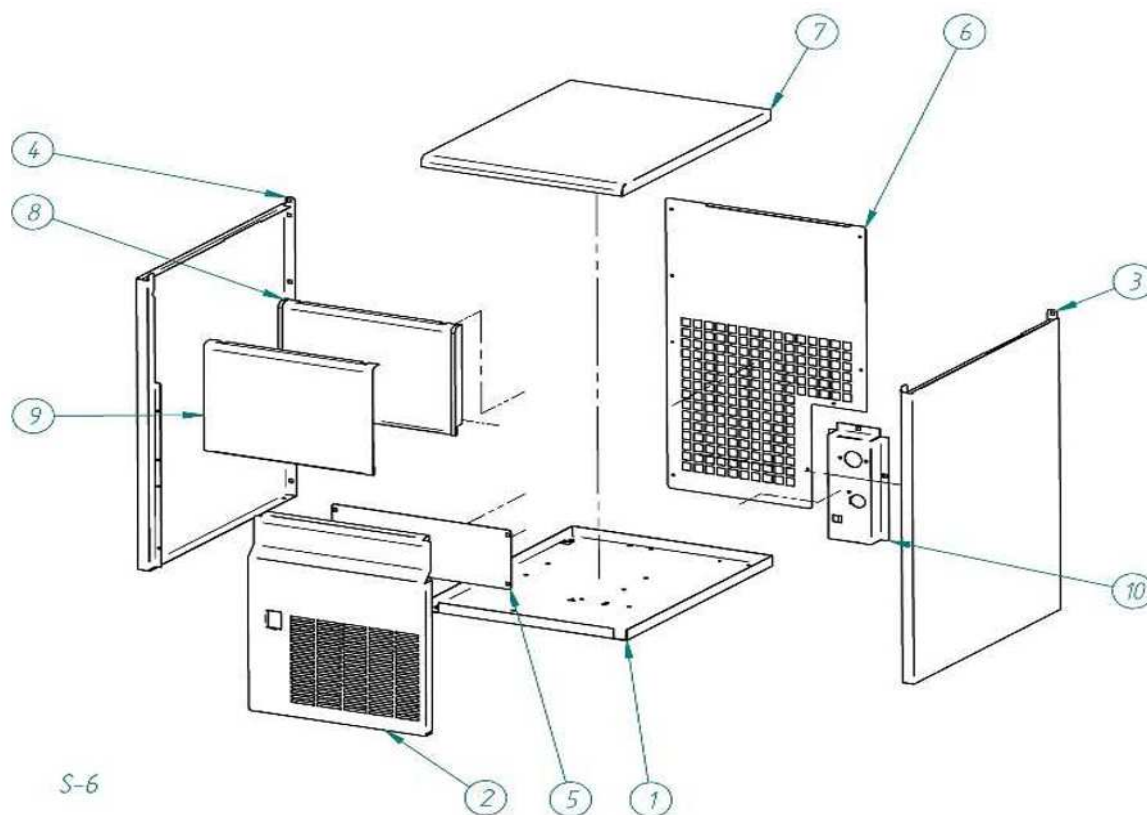


DESPICCE / REPUESTOS
EXPLODED VIEW / SPARE PARTS
EXPLOSIONSZEICHNUNG / ERSATZTEILE
VUE ÉCLATÉE / PIÈCES DÉTACHÉES
ESPLOSO / RICAMBI

CABINET



SS/SK 25

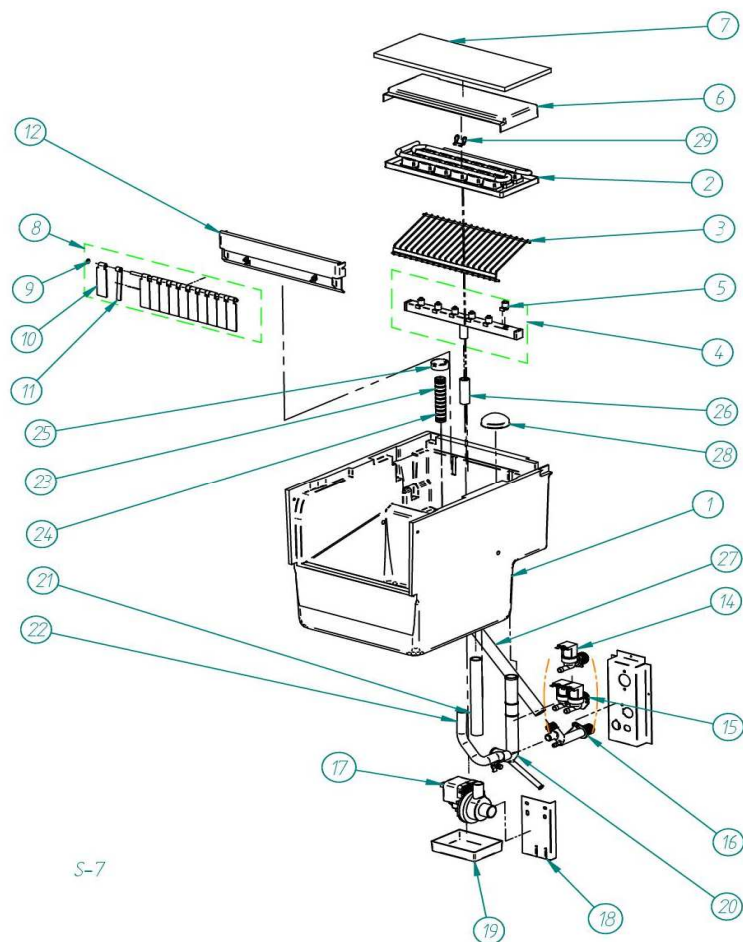


NAME		
1	BASE	1300
2	FRONT AND GRILL SS	4918
2	FRONT AND GRILL SK	4916
3	RIGHT PANEL SS	2294
3	RIGHT PANEL SK	4914
4	LEFT PANEL SS	2295
4	LEFT PANEL SK	4915
5	FRONT SUPPORT	1327
6	REAR PANEL	1794
7	TOP PANEL SS	1925
7	TOP PANEL SK	4917
8	DOOR	853
9	DOOR PANEL SS	30210
9	DOOR PANEL SK	4981
10	TUBE SUPPORT	1934

BIN & HYDRAULICS PARTS

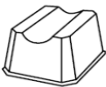


SS/SK 25

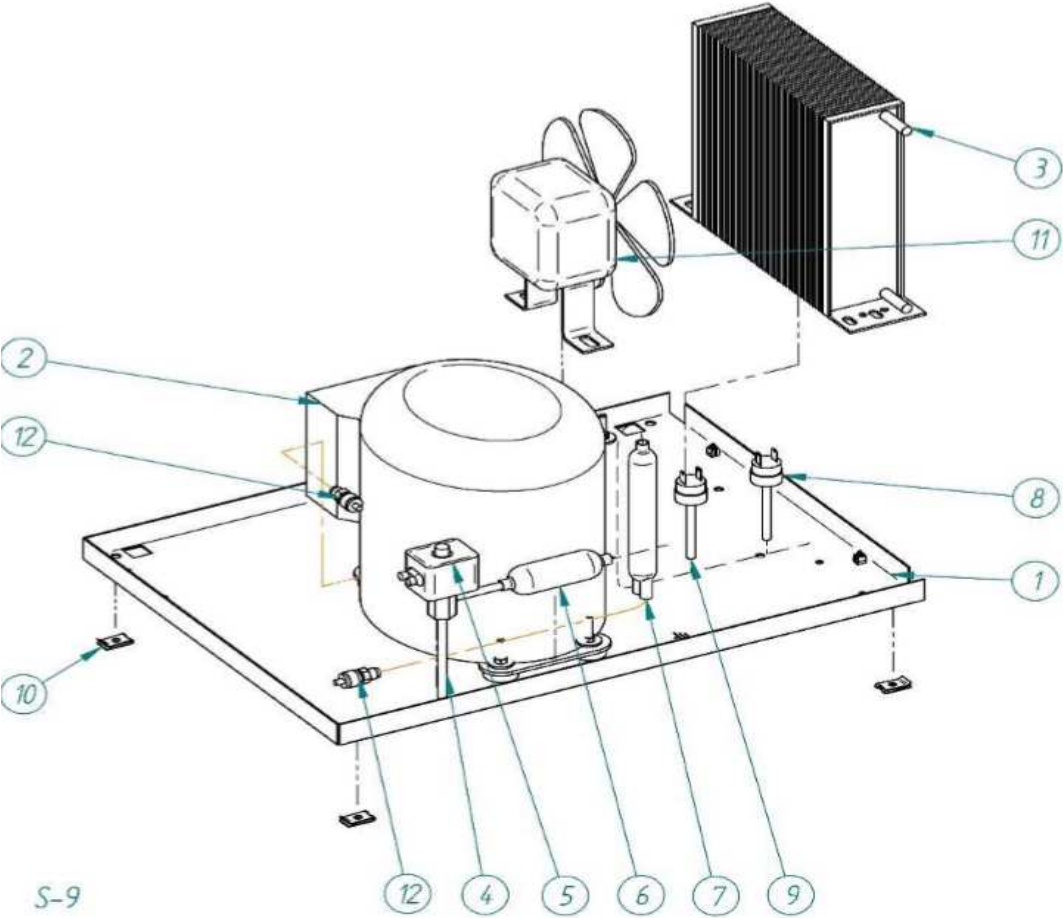


NAME		
1	STOCK BIN	7503
2	EVAPORATOR	6921
3	EJECT CUBE GRILL	31114
4	COLLECTOR	7333
5	NOZZLE	526
6	EVAPORATOR COVER	1432
8	CURTAIN	5223
9	JOINT	107
10	EXTERIOR CURTAIN SLAT	1213
11	INTERIOR CURTAIN SLAT	1212
12	EVAPORATOR SUPPORT	1435
13	CLIP	-
14	WATER INLET VALVE	6982
15	WATER INLET VALVE water cond.	7693
16	DRAIN COLLECTOR	363
17	WATER PUMP 220V/50HZ	4769
17	WATER PUMP 220V/60HZ	32048
17	WATER PUMP 115V/60HZ	32049
18	WATER PUMP SUPPORT	4613
19	CONDENSATION TRAY	4521
20	WATER INLET TUBE	4961
21	WATER OUTLET TUBE	4744
22	DRAIN	2189
23	OVERFLOW TUBE	4426
24	O-RING	4496
25	OVERFLOW COVER	4427
26	TUBE	993
27	DRAIN TUBE	2752
28	FILTER	580
29	THERMOSTAT CLIP	4534

AIR CONDENSER



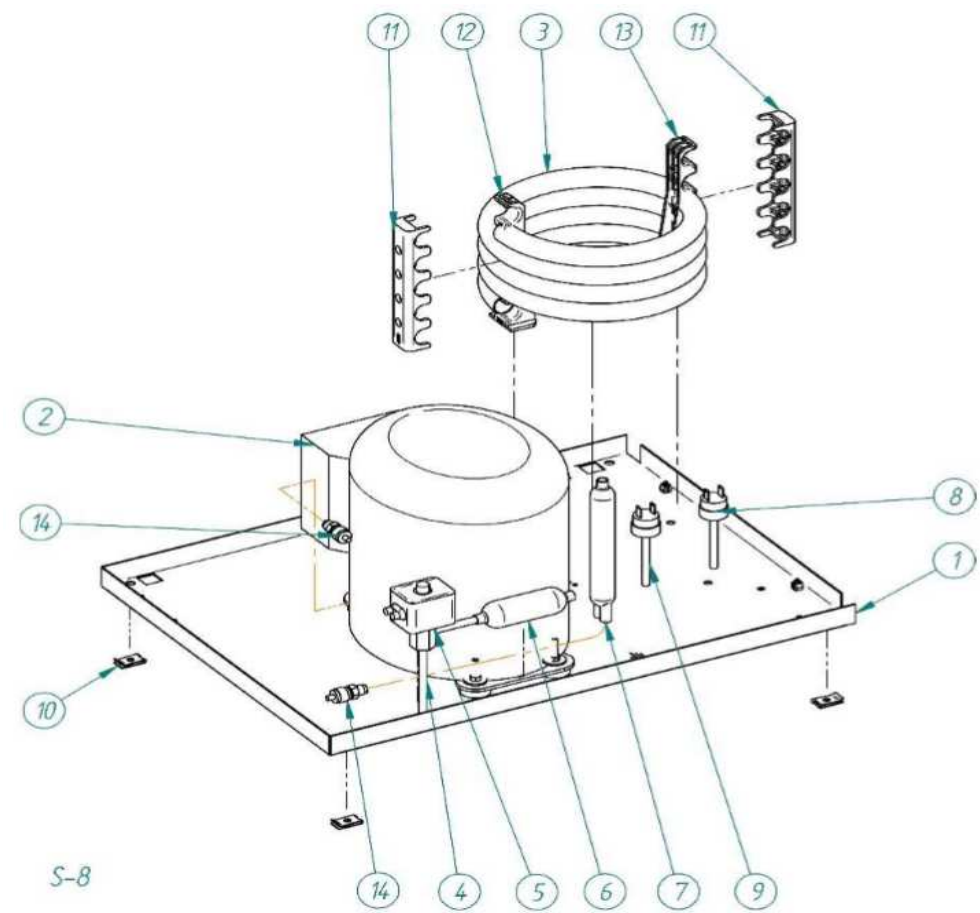
SS/SK 25



NAME		
1	BASE	1300
2	COMPRESSOR	8435
3	CONDENSER	6907
4	HOT GAS VALVE	6904
5	COIL	6906
6	FILTER	448
7	DRIER	6856
8	CONDENSING PRESSURE SWITCH	7476E
9	TERMOSTATO BIMETAL	4528
10	CLIP	5284
11	FAN	2170+587
12	INLET VALVE	335

WATER CONDENSER

 **SS/SK 25**

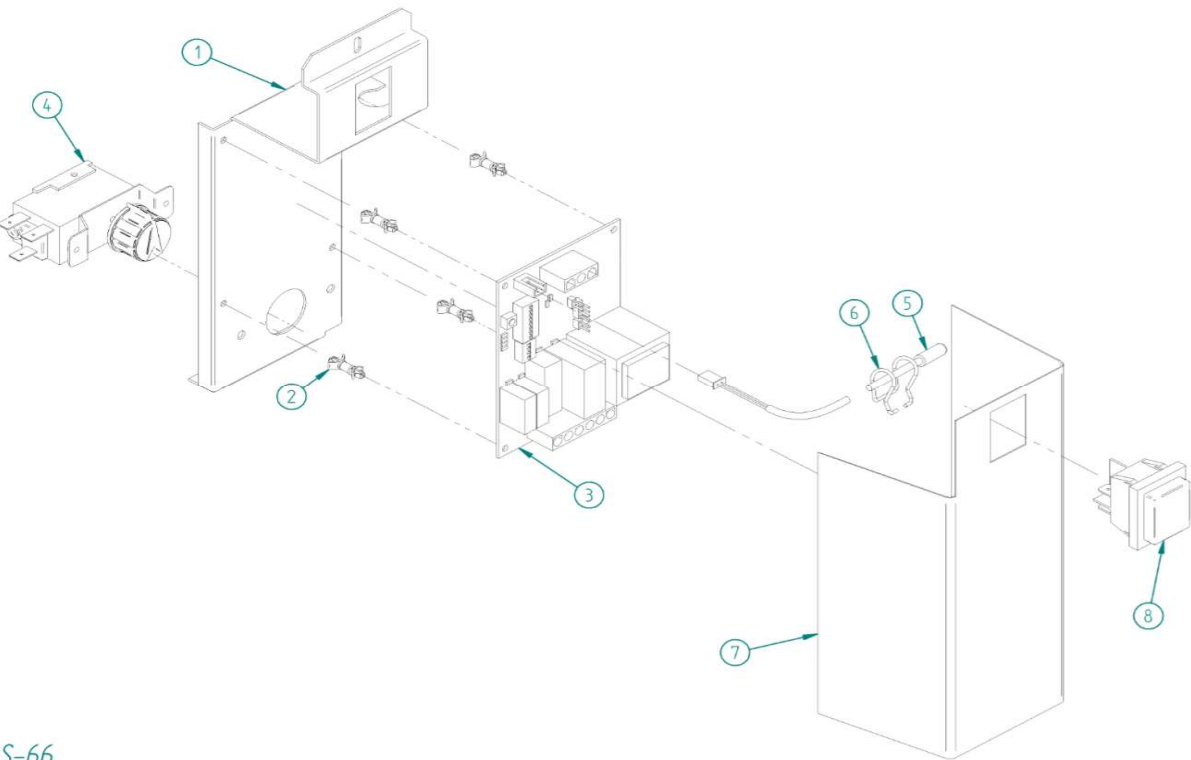


NAME		
1	BASE	1300
2	COMPRESOR	8435
3	CONDENSER	5224
4	HOT GAS VALVE	6904
5	COIL	6906
6	FILTER	580
7	DRIER	6856
8	CONDENSING PRESSURE SWITCH	7476E
9	BIMETAL THERMOSTAT	4528
10	CLIP	5284
11	SUPPORT	4038
12	SUPPORT	4037
13	SUPPORT	4036
14	INLET VALVE	335

ELECTRIC BOX



SS/SK 25



NAME		
1	SUPPORT	8166
2	ELECTRONIC BOARD CLIP	8186
3	ELECTRONIC BOARD	8143
4	STOCK THERMOSTAT	274
5	NTC TEMPERATURE PROBE	3004
6	TEMPERATURE PROBE CLIP	8218
7	ELECTRONIC BOARD CURTAIN	8213
8	SWITCH	2287

S-66